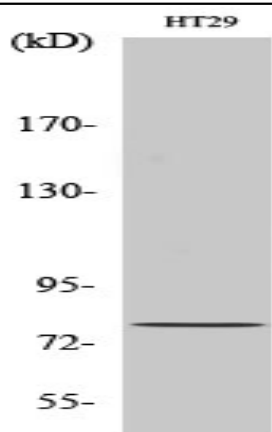


## CBP80 Polyclonal Antibody

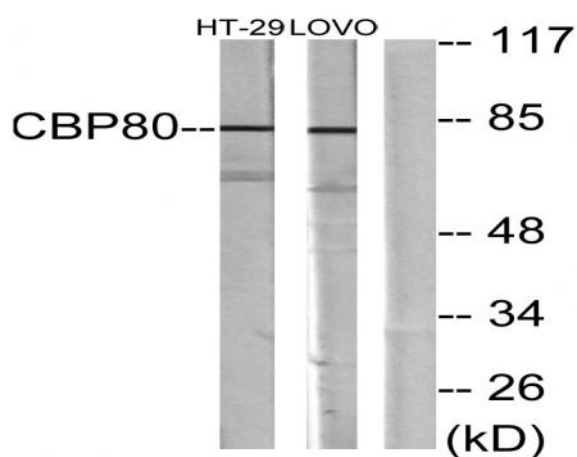
<b>Catalog No :</b>	YT0697
<b>Reactivity :</b>	Human;Mouse;Rat
<b>Applications :</b>	WB;IHC;IF;ELISA
<b>Target :</b>	CBP80
<b>Fields :</b>	>>Nucleocytoplasmic transport;>>mRNA surveillance pathway;>>Spliceosome;>>Amyotrophic lateral sclerosis
<b>Gene Name :</b>	NCBP1
<b>Protein Name :</b>	Nuclear cap-binding protein subunit 1
<b>Human Gene Id :</b>	4686
<b>Human Swiss Prot No :</b>	Q09161
<b>Mouse Gene Id :</b>	433702
<b>Mouse Swiss Prot No :</b>	Q3UYV9
<b>Rat Gene Id :</b>	298075
<b>Rat Swiss Prot No :</b>	Q56A27
<b>Immunogen :</b>	The antiserum was produced against synthesized peptide derived from human NCBP1. AA range:1-50
<b>Specificity :</b>	CBP80 Polyclonal Antibody detects endogenous levels of CBP80 protein.
<b>Formulation :</b>	Liquid in PBS containing 50% glycerol, 0.5% BSA and 0.02% sodium azide.
<b>Source :</b>	Polyclonal, Rabbit,IgG
<b>Dilution :</b>	WB 1:500 - 1:2000. IHC 1:100 - 1:300. ELISA: 1:20000.. IF 1:50-200

<b>Purification :</b>	The antibody was affinity-purified from rabbit antiserum by affinity-chromatography using epitope-specific immunogen.
<b>Concentration :</b>	1 mg/ml
<b>Storage Stability :</b>	-15°C to -25°C/1 year(Do not lower than -25°C)
<b>Observed Band :</b>	80kD
<b>Cell Pathway :</b>	Spliceosome;
<b>Background :</b>	The product of this gene is a component of the nuclear cap-binding protein complex (CBC), which binds to the monomethylated 5' cap of nascent pre-mRNA in the nucleoplasm. The encoded protein promotes high-affinity mRNA-cap binding and associates with the CTD of RNA polymerase II. The CBC promotes pre-mRNA splicing, 3'-end processing, RNA nuclear export, and nonsense-mediated mRNA decay. [provided by RefSeq, Jul 2008],
<b>Function :</b>	function:Involved in mediating U snRNA export from the nucleus. Binds to 5' capped mRNA.,similarity:Belongs to the NCBP1 family.,similarity:Contains 1 MIF4G domain.,subunit:Found in a U snRNA export complex with RNUXA/PHAX, CBP20, CBP80, RAN, XPO1 and m7G-capped RNA. Interaction with RNUXA/PHAX (By similarity). Heterodimer with NCBP2. Is part of the exon junction complex (EJC) containing NCBP1, NCBP2, RNPS1, RBM8A, SRRM1, NXF1, UPF3B, UPF2, THOC4 and/or REFBP2.,
<b>Subcellular Location :</b>	Nucleus . Cytoplasm . Localized in cytoplasmic mRNP granules containing untranslated mRNAs. .
<b>Expression :</b>	Brain,Epithelium,Placenta,
<b>Sort :</b>	3281
<b>No4 :</b>	1
<b>Host :</b>	Rabbit
<b>Modifications :</b>	Unmodified

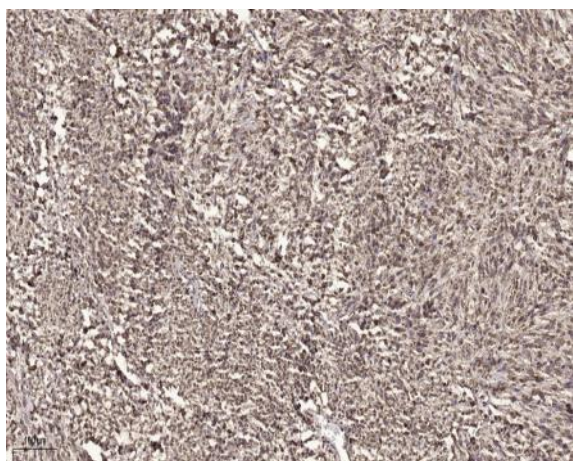
## Products Images



Western Blot analysis of various cells using CBP80 Polyclonal Antibody diluted at 1:500



Western blot analysis of lysates from HT-29 and LOVO cells, using NCBP1 Antibody. The lane on the right is blocked with the synthesized peptide.



Immunohistochemical analysis of paraffin-embedded human small intestinal carcinoma tissue. 1, primary Antibody was diluted at 1:200 (4° overnight). 2, Sodium citrate pH 6.0 was used for antigen retrieval (>98° C, 20min). 3, Secondary antibody was diluted at 1:200