

**Atg16L2 Polyclonal Antibody**

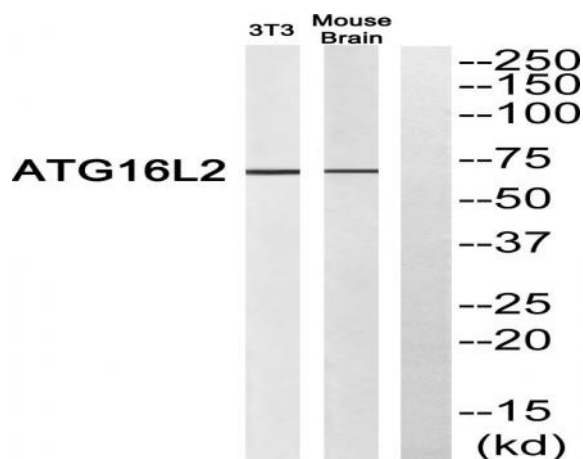
<b>Catalog No :</b>	YT0392
<b>Reactivity :</b>	Human;Mouse
<b>Applications :</b>	WB;ELISA
<b>Target :</b>	Atg16L2
<b>Fields :</b>	>>Autophagy - animal
<b>Gene Name :</b>	ATG16L2
<b>Protein Name :</b>	Autophagy-related protein 16-2
<b>Human Gene Id :</b>	89849
<b>Human Swiss Prot No :</b>	Q8NAA4
<b>Mouse Swiss Prot No :</b>	Q6KAU8
<b>Immunogen :</b>	The antiserum was produced against synthesized peptide derived from human ATG16L2. AA range:241-290
<b>Specificity :</b>	Atg16L2 Polyclonal Antibody detects endogenous levels of Atg16L2 protein.
<b>Formulation :</b>	Liquid in PBS containing 50% glycerol, 0.5% BSA and 0.02% sodium azide.
<b>Source :</b>	Polyclonal, Rabbit,IgG
<b>Dilution :</b>	WB 1:500 - 1:2000. ELISA: 1:20000. Not yet tested in other applications.
<b>Purification :</b>	The antibody was affinity-purified from rabbit antiserum by affinity-chromatography using epitope-specific immunogen.
<b>Concentration :</b>	1 mg/ml
<b>Storage Stability :</b>	-15°C to -25°C/1 year(Do not lower than -25°C)

---

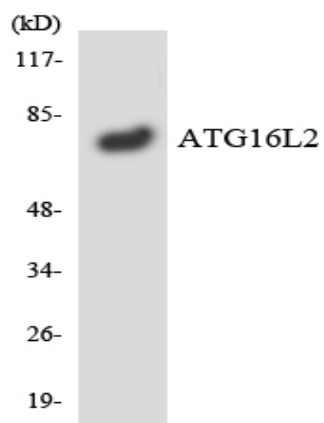
<b>Observed Band :</b>	70kD
<b>Background :</b>	function:May play a role in autophagy.,similarity:Belongs to the WD repeat ATG16 family.,similarity:Contains 7 WD repeats.,
<b>Function :</b>	function:May play a role in autophagy.,similarity:Belongs to the WD repeat ATG16 family.,similarity:Contains 7 WD repeats.,
<b>Subcellular Location :</b>	Cytoplasm, cytosol . Localizes also to discrete punctae along the ciliary axoneme. .
<b>Expression :</b>	Astrocyte,Blood,Eye,Spleen,Stomach,
<b>Sort :</b>	2386
<b>No4 :</b>	1
<b>Host :</b>	Rabbit
<b>Modifications :</b>	Unmodified

---

## Products Images



Western blot analysis of ATG16L2 Antibody. The lane on the right is blocked with the ATG16L2 peptide.



Western blot analysis of the lysates from RAW264.7 cells using ATG16L2 antibody.