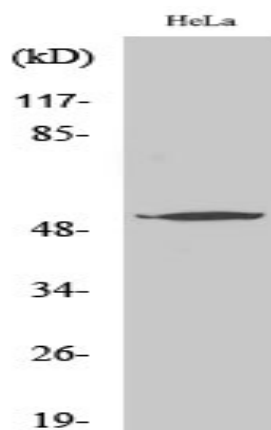


**ATF-7 Polyclonal Antibody**

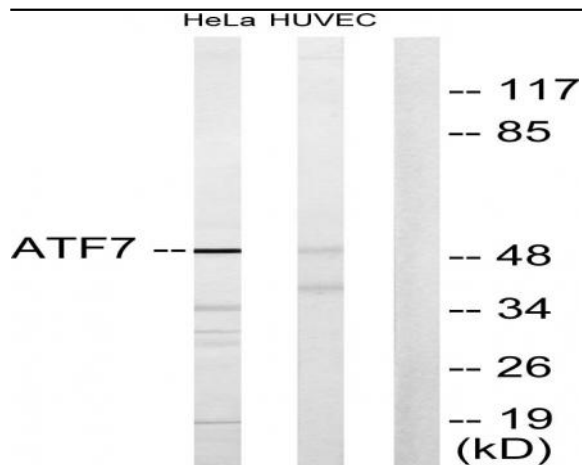
<b>Catalog No :</b>	YT0390
<b>Reactivity :</b>	Human;Mouse
<b>Applications :</b>	WB;IHC;IF;ELISA
<b>Target :</b>	ATF-7
<b>Gene Name :</b>	ATF7
<b>Protein Name :</b>	Cyclic AMP-dependent transcription factor ATF-7
<b>Human Gene Id :</b>	11016
<b>Human Swiss Prot No :</b>	P17544
<b>Mouse Gene Id :</b>	223922
<b>Mouse Swiss Prot No :</b>	Q8R0S1
<b>Immunogen :</b>	The antiserum was produced against synthesized peptide derived from human ATF7. AA range:41-90
<b>Specificity :</b>	ATF-7 Polyclonal Antibody detects endogenous levels of ATF-7 protein.
<b>Formulation :</b>	Liquid in PBS containing 50% glycerol, 0.5% BSA and 0.02% sodium azide.
<b>Source :</b>	Polyclonal, Rabbit,IgG
<b>Dilution :</b>	WB 1:500 - 1:2000. IHC 1:100 - 1:300. IF 1:200 - 1:1000. ELISA: 1:20000. Not yet tested in other applications.
<b>Purification :</b>	The antibody was affinity-purified from rabbit antiserum by affinity-chromatography using epitope-specific immunogen.
<b>Concentration :</b>	1 mg/ml
<b>Storage Stability :</b>	-15°C to -25°C/1 year(Do not lower than -25°C)

**Observed Band :** 52kD**Background :** function: Binds the cAMP response element (CRE) (consensus: 5'-GTGACGT[AG][AG]-3'), a sequence present in many viral and cellular promoters., similarity: Belongs to the bZIP family., similarity: Contains 1 bZIP domain., similarity: Contains 1 C2H2-type zinc finger., subunit: Binds DNA as a dimer.,**Function :** function: Binds the cAMP response element (CRE) (consensus: 5'-GTGACGT[AG][AG]-3'), a sequence present in many viral and cellular promoters., similarity: Belongs to the bZIP family., similarity: Contains 1 bZIP domain., similarity: Contains 1 C2H2-type zinc finger., subunit: Binds DNA as a dimer.,**Subcellular Location :** Nucleus . Nucleus, nucleoplasm . Chromosome, telomere . Mainly nucleoplasmic. Restricted distribution to the perinuclear region. The sumoylated form locates to the nuclear periphery.; [Isoform 5]: Cytoplasm .**Expression :** Expressed in various tissues including heart, brain, placenta, lung and skeletal muscle. Highest levels in skeletal muscle. Lowest in lung and placenta. ; [Isoform 4]: Strongly expressed in skeletal muscle. Also expressed at lower levels in heart and lung.**Sort :** 2372**No4 :** 1**Host :** Rabbit**Modifications :** Unmodified

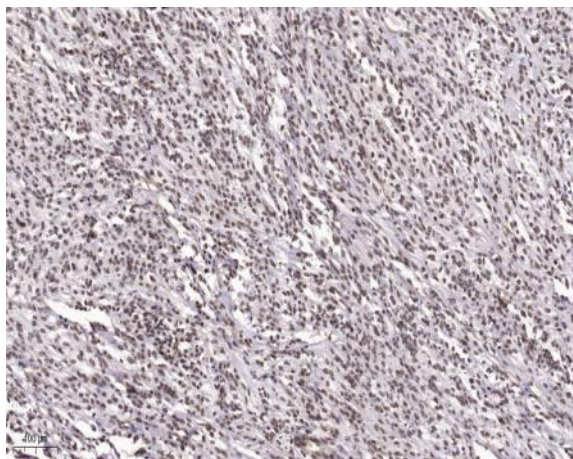
## Products Images



Western Blot analysis of various cells using ATF-7 Polyclonal Antibody



Western blot analysis of lysates from HeLa and HUVEC cells, using ATF7 Antibody. The lane on the right is blocked with the synthesized peptide.



Immunohistochemical analysis of paraffin-embedded human Small intestinal stromal tumor. 1, Tris-EDTA, pH 9.0 was used for antigen retrieval. 2 Antibody was diluted at 1:200 (4° overnight). 3, Secondary antibody was diluted at 1:200 (room temperature, 45 min).