

AR- β 2 Polyclonal Antibody

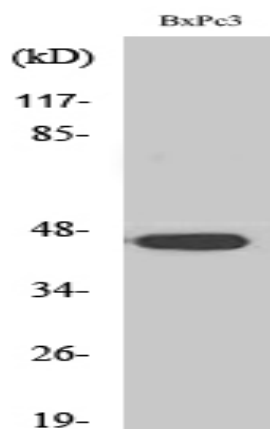
Catalog No :	YT0361
Reactivity :	Human;Rat;Mouse;
Applications :	WB;IHC;IF;FCM;ELISA
Target :	Adrenergic Receptor β 2
Fields :	>>Calcium signaling pathway;>>cGMP-PKG signaling pathway;>>cAMP signaling pathway;>>Neuroactive ligand-receptor interaction;>>Adrenergic signaling in cardiomyocytes;>>Regulation of lipolysis in adipocytes;>>Renin secretion;>>Salivary secretion;>>Chemical carcinogenesis - receptor activation
Gene Name :	ADRB2
Protein Name :	Beta-2 adrenergic receptor
Human Gene Id :	154
Human Swiss Prot No :	P07550
Mouse Swiss Prot No :	P18762
Immunogen :	The antiserum was produced against synthesized peptide derived from human Adrenergic Receptor beta2. AA range:321-370
Specificity :	AR- β 2 Polyclonal Antibody detects endogenous levels of AR- β 2 protein.
Formulation :	Liquid in PBS containing 50% glycerol, 0.5% BSA and 0.02% sodium azide.
Source :	Polyclonal, Rabbit,IgG
Dilution :	WB 1:500 - 1:2000. IHC 1:100 - 1:300. IF 1:200 - 1:1000. Flow cytometry: 1:200 - 1:400. ELISA: 1:5000. Not yet tested in other applications.
Purification :	The antibody was affinity-purified from rabbit antiserum by affinity-chromatography using epitope-specific immunogen.

Concentration :	1 mg/ml
Storage Stability :	-15°C to -25°C/1 year(Do not lower than -25°C)
Observed Band :	47kD
Cell Pathway :	Calcium;Neuroactive ligand-receptor interaction;Endocytosis;
Background :	<p>This gene encodes beta-2-adrenergic receptor which is a member of the G protein-coupled receptor superfamily. This receptor is directly associated with one of its ultimate effectors, the class C L-type calcium channel Ca(V)1.2. This receptor-channel complex also contains a G protein, an adenylyl cyclase, cAMP-dependent kinase, and the counterbalancing phosphatase, PP2A. The assembly of the signaling complex provides a mechanism that ensures specific and rapid signaling by this G protein-coupled receptor. This gene is intronless. Different polymorphic forms, point mutations, and/or downregulation of this gene are associated with nocturnal asthma, obesity and type 2 diabetes. [provided by RefSeq, Jul 2008],</p>
Function :	<p>disease:Polymorphic forms of ADRB2 could impart some form of nocturnal asthma.,function:Beta-adrenergic receptors mediate the catecholamine-induced activation of adenylate cyclase through the action of G proteins. The beta-2-adrenergic receptor binds epinephrine with an approximately 30-fold greater affinity than it does norepinephrine.,PTM:Palmitoylated; may reduce accessibility of Ser-345 and Ser-346 by anchoring Cys-341 to the plasma membrane. Agonist stimulation promotes depalmitoylation and further allows Ser-345 and Ser-346 phosphorylation.,PTM:Phosphorylated by PKA and BARK upon agonist stimulation, which mediates homologous desensitization of the receptor. PKA-mediated phosphorylation seems to facilitate phosphorylation by BARK. Phosphorylated upon DNA damage, probably by ATM or ATR.,PTM:Phosphorylation of Tyr-141 is induced by insulin and leads to supersensitization of the recep</p>
Subcellular Location :	<p>Cell membrane ; Multi-pass membrane protein . Early endosome . Golgi apparatus . Colocalizes with VHL at the cell membrane (PubMed:19584355). Activated receptors are internalized into endosomes prior to their degradation in lysosomes (PubMed:20559325). Activated receptors are also detected within the Golgi apparatus (PubMed:27481942). .</p>
Expression :	Blood,Brain,Fetal brain,Heart,Leukocyte,Prostate,Thyroid,
Tag :	hot
Sort :	2305
No4 :	1

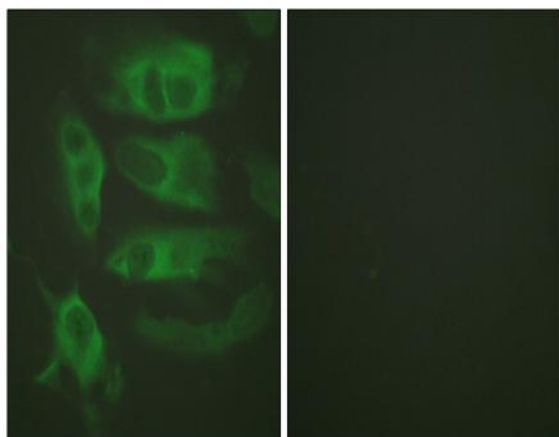
Host : Rabbit

Modifications : Unmodified

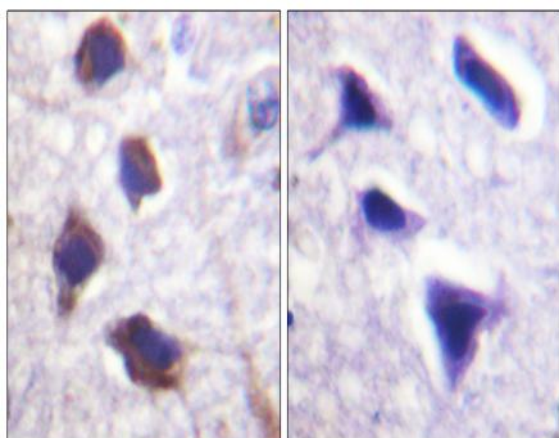
Products Images



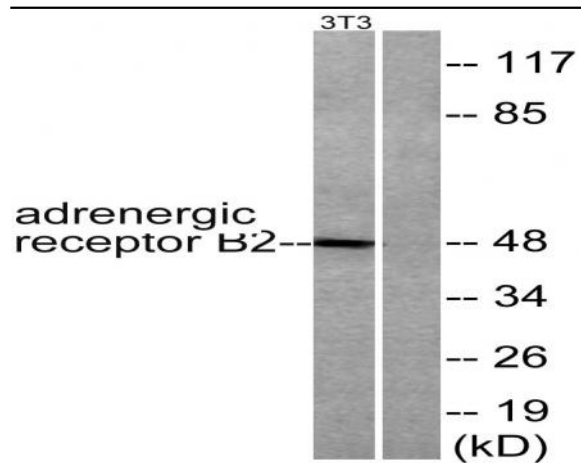
Western Blot analysis of various cells using AR- β 2 Polyclonal Antibody



Immunofluorescence analysis of HeLa cells, using Adrenergic Receptor beta2 Antibody. The picture on the right is blocked with the synthesized peptide.



Immunohistochemistry analysis of paraffin-embedded human brain tissue, using Adrenergic Receptor beta2 Antibody. The picture on the right is blocked with the synthesized peptide.



Western blot analysis of lysates from NIH/3T3 cells, using Adrenergic Receptor beta2 Antibody. The lane on the right is blocked with the synthesized peptide.