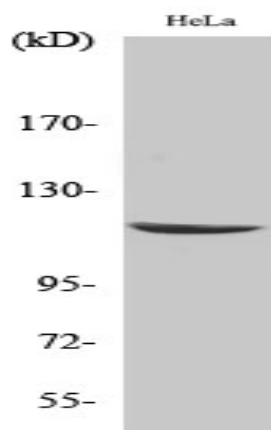


CARD 6 Polyclonal Antibody

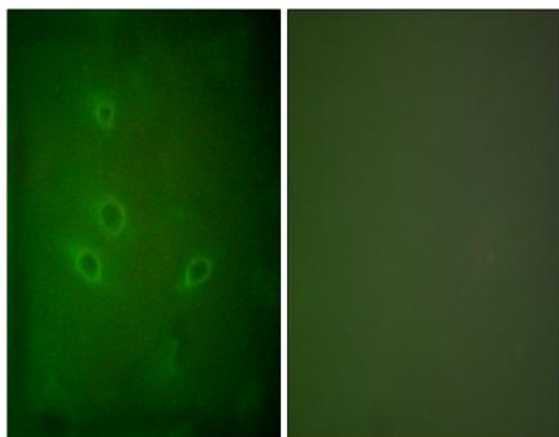
Catalog No :	YT0637
Reactivity :	Human;
Applications :	WB;IHC;IF;ELISA
Target :	CARD 6
Fields :	>>NOD-like receptor signaling pathway
Gene Name :	CARD6
Protein Name :	Caspase recruitment domain-containing protein 6
Human Gene Id :	84674
Human Swiss Prot No :	Q9BX69
Immunogen :	The antiserum was produced against synthesized peptide derived from human CARD6. AA range:1-50
Specificity :	CARD 6 Polyclonal Antibody detects endogenous levels of CARD 6 protein.
Formulation :	Liquid in PBS containing 50% glycerol, 0.5% BSA and 0.02% sodium azide.
Source :	Polyclonal, Rabbit,IgG
Dilution :	WB 1:500 - 1:2000. IHC 1:100 - 1:300. IF 1:200 - 1:1000. ELISA: 1:10000. Not yet tested in other applications.
Purification :	The antibody was affinity-purified from rabbit antiserum by affinity-chromatography using epitope-specific immunogen.
Concentration :	1 mg/ml
Storage Stability :	-15°C to -25°C/1 year(Do not lower than -25°C)
Observed Band :	116kD

Cell Pathway :	<u>NOD-like receptor;</u>
Background :	<u>This gene encodes a protein that contains a caspase recruitment domain (CARD), an antiparallel six-helical bundle that mediates homotypic protein-protein interactions. The encoded protein is a microtubule-associated protein that has been shown to interact with receptor-interacting protein kinases and positively modulate signal transduction pathways converging on activation of the inducible transcription factor NF-kB. [provided by RefSeq, Jul 2008],</u>
Function :	<u>function:May be involved in apoptosis.,similarity:Contains 1 CARD domain.,</u>
Expression :	<u>Aorta endothelial cell,Colon,Epithelium,Skeletal muscle,</u>
Sort :	<u>3121</u>
No4 :	<u>1</u>
Host :	<u>Rabbit</u>
Modifications :	<u>Unmodified</u>

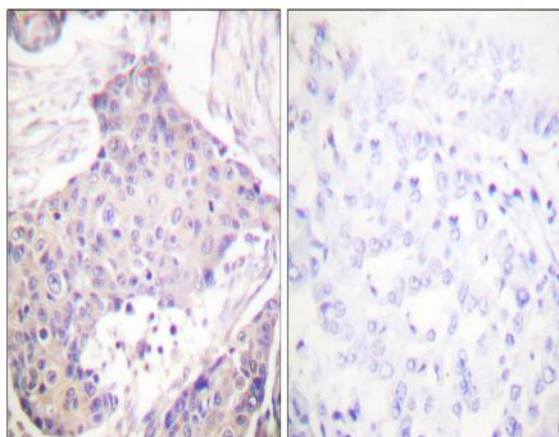
Products Images



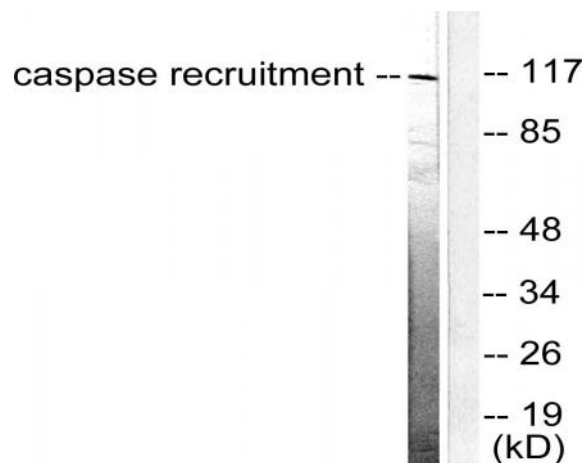
Western Blot analysis of various cells using CARD 6 Polyclonal Antibody



Immunofluorescence analysis of HeLa cells, using CARD6 Antibody. The picture on the right is blocked with the synthesized peptide.



Immunohistochemistry analysis of paraffin-embedded human breast carcinoma tissue, using CARD6 Antibody. The picture on the right is blocked with the synthesized peptide.



Western blot analysis of lysates from HeLa cells, using CARD6 Antibody. The lane on the right is blocked with the synthesized peptide.