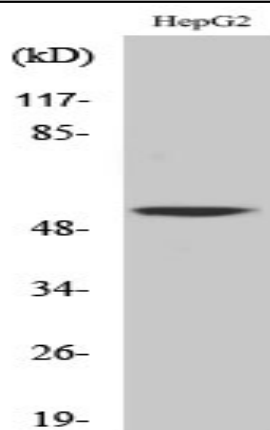


CaMKV Polyclonal Antibody

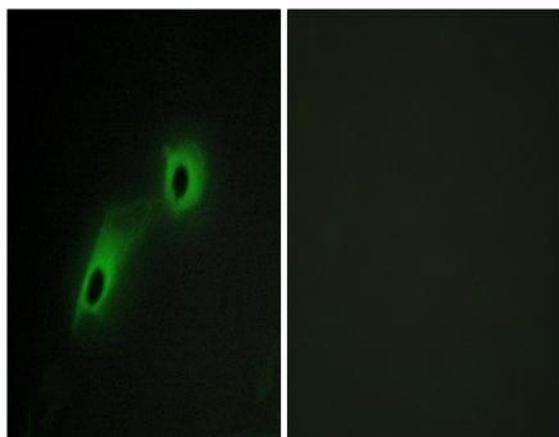
Catalog No :	YT0630
Reactivity :	Human;Mouse;Rat
Applications :	WB;IHC;IF;ELISA
Target :	CaMKV
Gene Name :	CAMKV
Protein Name :	CaM kinase-like vesicle-associated protein
Human Gene Id :	79012
Human Swiss Prot No :	Q8NCB2
Mouse Gene Id :	235604
Mouse Swiss Prot No :	Q3UHL1
Rat Gene Id :	79011
Rat Swiss Prot No :	Q63092
Immunogen :	The antiserum was produced against synthesized peptide derived from human CAMK5. AA range:211-260
Specificity :	CaMKV Polyclonal Antibody detects endogenous levels of CaMKV protein.
Formulation :	Liquid in PBS containing 50% glycerol, 0.5% BSA and 0.02% sodium azide.
Source :	Polyclonal, Rabbit,IgG
Dilution :	WB 1:500 - 1:2000. IHC 1:100 - 1:300. IF 1:200 - 1:1000. ELISA: 1:10000. Not yet tested in other applications.
Purification :	The antibody was affinity-purified from rabbit antiserum by affinity-chromatography using epitope-specific immunogen.

Concentration :	1 mg/ml
Storage Stability :	-15°C to -25°C/1 year(Do not lower than -25°C)
Observed Band :	54kD
Background :	cofactor:Calcium.,domain:The protein kinase domain is predicted to be catalytically inactive.,function:Does not appear to have detectable kinase activity.,similarity:Belongs to the protein kinase superfamily. CAMK Ser/Thr protein kinase family.,similarity:Contains 1 protein kinase domain.,subcellular location:Predominantly observed in association with the plasma membrane of soma and in neurites, both axons and dendrites. May be associated with vesicular structures.,subunit:Interacts with calmodulin, in the presence of calcium.,
Function :	cofactor:Calcium.,domain:The protein kinase domain is predicted to be catalytically inactive.,function:Does not appear to have detectable kinase activity.,similarity:Belongs to the protein kinase superfamily. CAMK Ser/Thr protein kinase family.,similarity:Contains 1 protein kinase domain.,subcellular location:Predominantly observed in association with the plasma membrane of soma and in neurites, both axons and dendrites. May be associated with vesicular structures.,subunit:Interacts with calmodulin, in the presence of calcium.,
Subcellular Location :	Cell membrane ; Peripheral membrane protein . Cytoplasmic vesicle membrane ; Peripheral membrane protein . Predominantly observed in association with the plasma membrane of soma and in neurites, both axons and dendrites. May be associated with vesicular structures (By similarity) .
Expression :	Brain,Lung,Retinoblastoma,Teratocarcinoma,
Sort :	3106
No4 :	1
Host :	Rabbit
Modifications :	Unmodified

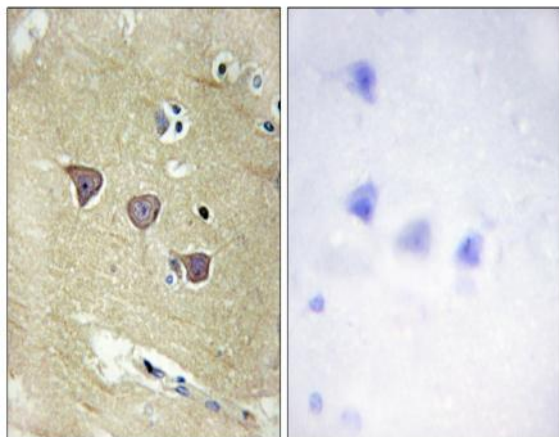
Products Images



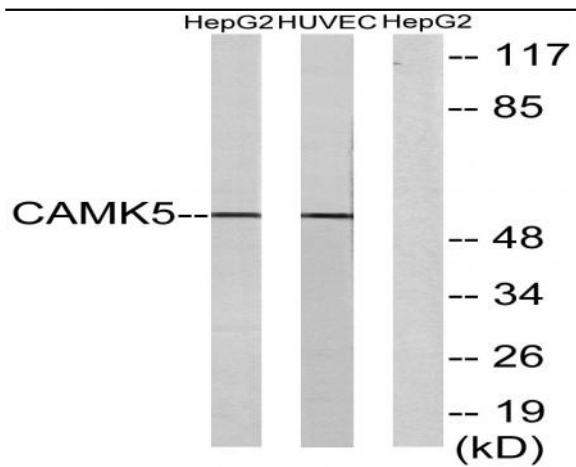
Western Blot analysis of various cells using CaMKV Polyclonal Antibody



Immunofluorescence analysis of HeLa cells, using CAMK5 Antibody. The picture on the right is blocked with the synthesized peptide.



Immunohistochemistry analysis of paraffin-embedded human brain tissue, using CAMK5 Antibody. The picture on the right is blocked with the synthesized peptide.



Western blot analysis of lysates from HepG2 and HUVEC cells, using CAMK5 Antibody. The lane on the right is blocked with the synthesized peptide.