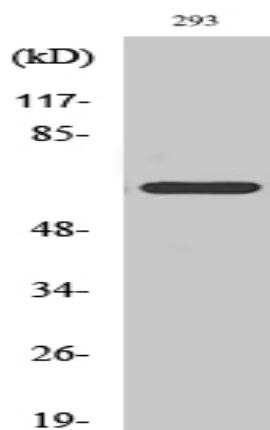


**ARMCX2 Polyclonal Antibody**

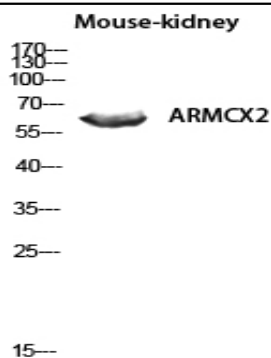
<b>Catalog No :</b>	YT0332
<b>Reactivity :</b>	Human;Mouse;Rat
<b>Applications :</b>	WB;IHC;IF;ELISA
<b>Target :</b>	ARMCX2
<b>Gene Name :</b>	ARMCX2
<b>Protein Name :</b>	Armadillo repeat-containing X-linked protein 2
<b>Human Gene Id :</b>	9823
<b>Human Swiss Prot No :</b>	Q7L311
<b>Mouse Gene Id :</b>	67416
<b>Mouse Swiss Prot No :</b>	Q6A058
<b>Immunogen :</b>	The antiserum was produced against synthesized peptide derived from human ARM CX2. AA range:321-370
<b>Specificity :</b>	ARM CX2 Polyclonal Antibody detects endogenous levels of ARM CX2 protein.
<b>Formulation :</b>	Liquid in PBS containing 50% glycerol, 0.5% BSA and 0.02% sodium azide.
<b>Source :</b>	Polyclonal, Rabbit,IgG
<b>Dilution :</b>	WB 1:500 - 1:2000. IHC 1:100 - 1:300. IF 1:200 - 1:1000. ELISA: 1:20000. Not yet tested in other applications.
<b>Purification :</b>	The antibody was affinity-purified from rabbit antiserum by affinity-chromatography using epitope-specific immunogen.
<b>Concentration :</b>	1 mg/ml
<b>Storage Stability :</b>	-15°C to -25°C/1 year(Do not lower than -25°C)

**Observed Band :** 65kD**Background :** armadillo repeat containing, X-linked 2(ARMCX2) Homo sapiens This gene encodes a protein containing a potential N-terminal transmembrane domain and multiple armadillo (arm) repeats. Proteins containing arm repeats are involved in development, maintenance of tissue integrity, and tumorigenesis. This gene is located in a cluster of related genes on chromosome X. There is a pseudogene for this gene on chromosome 7. Alternative splicing in the 5' UTR results in multiple transcript variants encoding the same protein. [provided by RefSeq, Aug 2013],**Function :** similarity:Contains 3 ARM repeats.,tissue specificity:Expressed at high levels ovary, heart, testis, prostate, brain, spleen and colon. Expressed at very low levels in liver and thymus. Not expressed in peripheral blood leukocytes. Not expressed in pancreas and ovarian carcinomas.,**Subcellular Location :** Mitochondrion . Mitochondrion outer membrane ; Single-pass membrane protein**Expression :** Expressed at high levels ovary, heart, testis, prostate, brain, spleen and colon. Expressed at very low levels in liver and thymus. Not expressed in peripheral blood leukocytes. Not expressed in pancreas and ovarian carcinomas.**Sort :** 2268**No4 :** 1**Host :** Rabbit**Modifications :** Unmodified

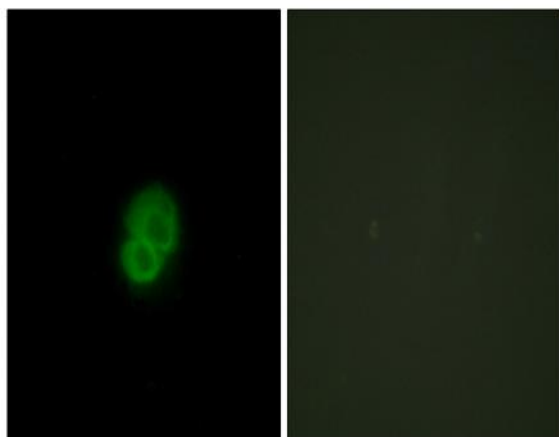
## Products Images



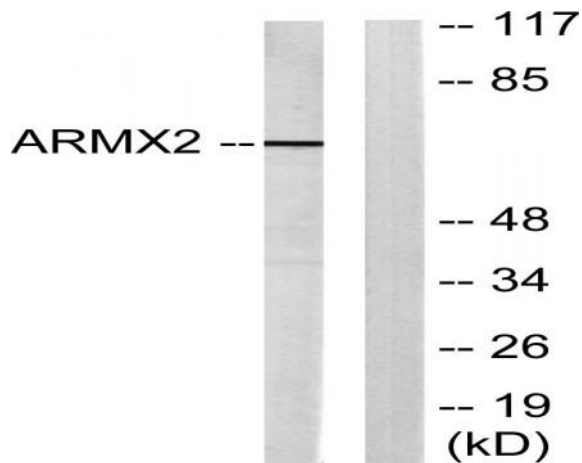
Western Blot analysis of various cells using ARM CX2 Polyclonal Antibody diluted at 1:1000



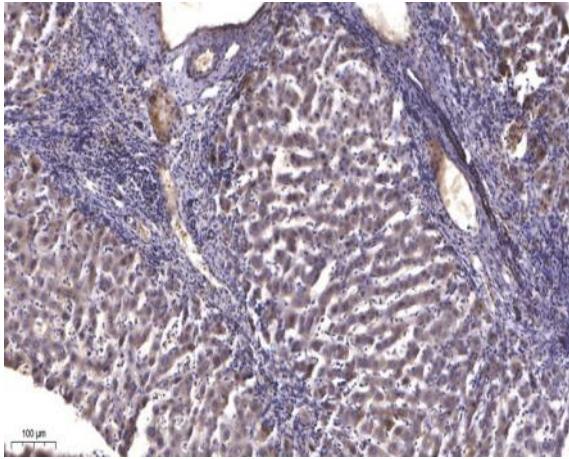
Western blot analysis of Mouse-kidney lysis using ARM CX2 antibody. Antibody was diluted at 1:1000



Immunofluorescence analysis of HepG2 cells, using ARM CX2 Antibody. The picture on the right is blocked with the synthesized peptide.



Western blot analysis of lysates from 293 cells, using ARM CX2 Antibody. The lane on the right is blocked with the synthesized peptide.



Immunohistochemical analysis of paraffin-embedded human liver cancer. 1, Antibody was diluted at 1:200(4° overnight). 2, Tris-EDTA,pH9.0 was used for antigen retrieval. 3,Secondary antibody was diluted at 1:200(room temperature, 45min).