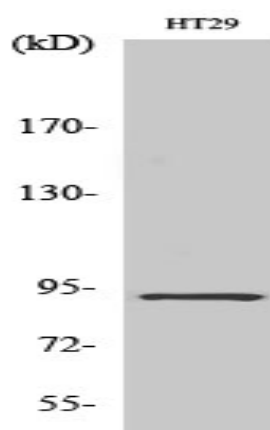


CAGE-1 Polyclonal Antibody

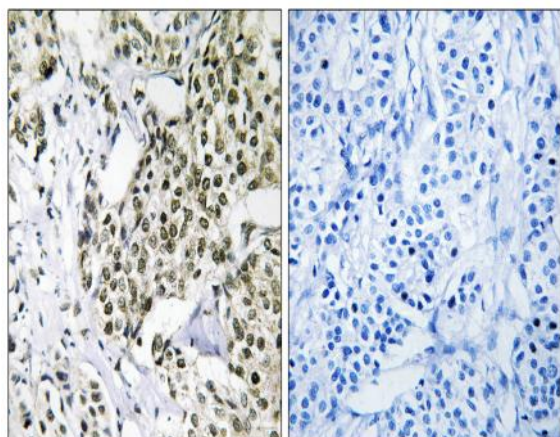
Catalog No :	YT0606
Reactivity :	Human;Rat;Mouse;
Applications :	WB;IHC;IF;ELISA
Target :	CAGE-1
Gene Name :	CAGE1
Protein Name :	Cancer-associated gene 1 protein
Human Gene Id :	285782
Human Swiss Prot No :	Q8TC20
Mouse Swiss Prot No :	Q5IR70
Immunogen :	The antiserum was produced against synthesized peptide derived from human CAGE1. AA range:711-760
Specificity :	CAGE-1 Polyclonal Antibody detects endogenous levels of CAGE-1 protein.
Formulation :	Liquid in PBS containing 50% glycerol, 0.5% BSA and 0.02% sodium azide.
Source :	Polyclonal, Rabbit,IgG
Dilution :	WB 1:500 - 1:2000. IHC 1:100 - 1:300. ELISA: 1:40000.. IF 1:50-200
Purification :	The antibody was affinity-purified from rabbit antiserum by affinity-chromatography using epitope-specific immunogen.
Concentration :	1 mg/ml
Storage Stability :	-15°C to -25°C/1 year(Do not lower than -25°C)
Observed Band :	90kD

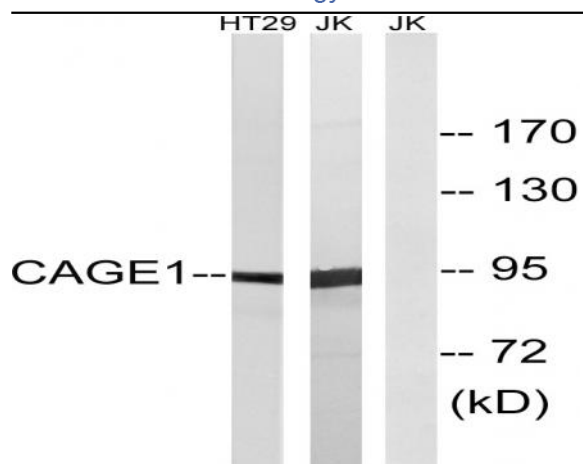
Background :	tissue specificity:Testis-specific expression in normal tissues, but wide expression among cancer tissues and cell lines.,
Function :	tissue specificity:Testis-specific expression in normal tissues, but wide expression among cancer tissues and cell lines.,
Expression :	Testis-specific expression in normal tissues, but wide expression among cancer tissues and cell lines.
Sort :	3042
No4 :	1
Host :	Rabbit
Modifications :	Unmodified

Products Images

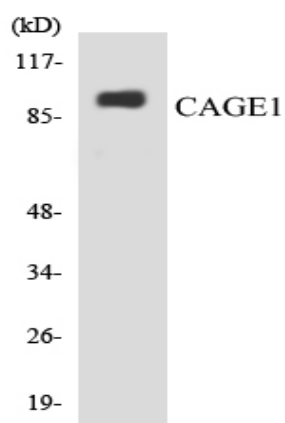


Western Blot analysis of various cells using CAGE-1 Polyclonal Antibody diluted at 1:2000





Western blot analysis of lysates from HT-29 and Jurkat cells, using CAGE1 Antibody. The lane on the right is blocked with the synthesized peptide.



Western blot analysis of the lysates from HepG2 cells using CAGE1 antibody.