

Cadherin-19 Polyclonal Antibody

| | |
|------------------------------|---|
| Catalog No : | YT0596 |
| Reactivity : | Human;Rat;Mouse; |
| Applications : | WB;IHC;IF;ELISA |
| Target : | Cadherin-19 |
| Gene Name : | CDH19 |
| Protein Name : | Cadherin-19 |
| Human Gene Id : | 28513 |
| Human Swiss Prot No : | Q9H159 |
| Immunogen : | The antiserum was produced against synthesized peptide derived from human CDH19. AA range:371-420 |
| Specificity : | Cadherin-19 Polyclonal Antibody detects endogenous levels of Cadherin-19 protein. |
| Formulation : | Liquid in PBS containing 50% glycerol, 0.5% BSA and 0.02% sodium azide. |
| Source : | Polyclonal, Rabbit,IgG |
| Dilution : | WB 1:500 - 1:2000. IHC 1:100 - 1:300. IF 1:200 - 1:1000. ELISA: 1:20000. Not yet tested in other applications. |
| Purification : | The antibody was affinity-purified from rabbit antiserum by affinity-chromatography using epitope-specific immunogen. |
| Concentration : | 1 mg/ml |
| Storage Stability : | -15°C to -25°C/1 year(Do not lower than -25°C) |
| Observed Band : | 87kD |

Cell Pathway : Adherens_Junction

Background : This gene is one of three related type II cadherin genes situated in a cluster on chromosome 18. The encoded protein is a calcium dependent cell-cell adhesion glycoprotein containing five extracellular cadherin repeats. Loss of cadherins may be associated with cancer formation. Alternative splicing results in multiple transcript variants for this gene. [provided by RefSeq, Aug 2012],

Function : function:Cadherins are calcium dependent cell adhesion proteins. They preferentially interact with themselves in a homophilic manner in connecting cells; cadherins may thus contribute to the sorting of heterogeneous cell types.,similarity:Contains 5 cadherin domains.,tissue specificity:Expressed in many tissues, with the exception of uterus.,

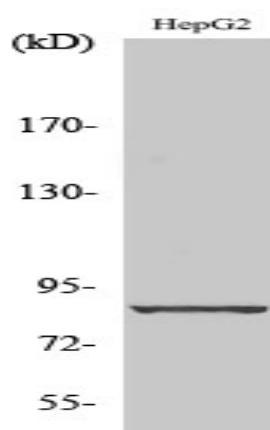
Subcellular Location : Cell membrane; Single-pass type I membrane protein.

Expression : Expressed in many tissues, with the exception of uterus.

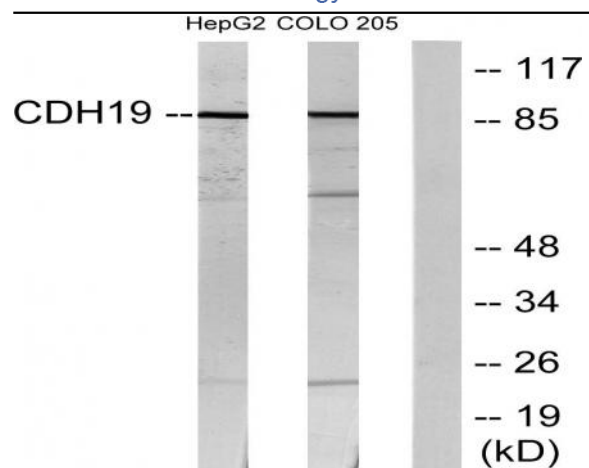
Sort : 3031

No4 : 1

Products Images



Western Blot analysis of various cells using Cadherin-19 Polyclonal Antibody diluted at 1:1000



Western blot analysis of lysates from HepG2 and COLO205 cells, using CDH19 Antibody. The lane on the right is blocked with the synthesized peptide.