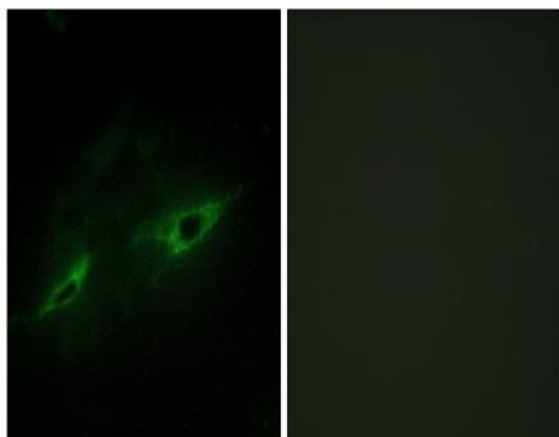


Cadherin-22 Polyclonal Antibody

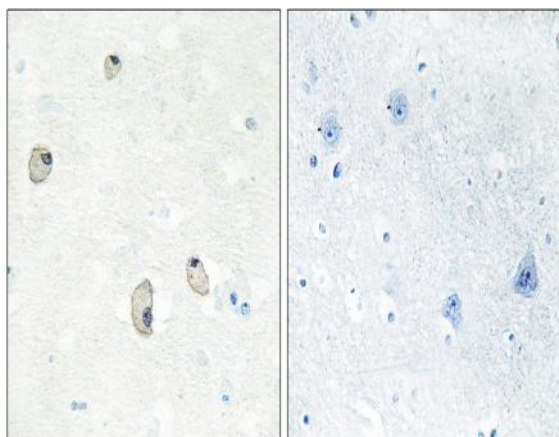
Catalog No :	YT0598
Reactivity :	Human;Mouse;Rat
Applications :	WB;IHC;IF;ELISA
Target :	Cadherin-22
Gene Name :	CDH22
Protein Name :	Cadherin-22
Human Gene Id :	64405
Human Swiss Prot No :	Q9UJ99
Mouse Swiss Prot No :	Q9WTP5
Rat Gene Id :	29182
Rat Swiss Prot No :	Q63315
Immunogen :	The antiserum was produced against synthesized peptide derived from human CDH22. AA range:111-160
Specificity :	Cadherin-22 Polyclonal Antibody detects endogenous levels of Cadherin-22 protein.
Formulation :	Liquid in PBS containing 50% glycerol, 0.5% BSA and 0.02% sodium azide.
Source :	Polyclonal, Rabbit,IgG
Dilution :	WB 1:500 - 1:2000. IHC 1:100 - 1:300. IF 1:200 - 1:1000. ELISA: 1:10000. Not yet tested in other applications.
Purification :	The antibody was affinity-purified from rabbit antiserum by affinity-chromatography using epitope-specific immunogen.

Concentration :	1 mg/ml
Storage Stability :	-15°C to -25°C/1 year(Do not lower than -25°C)
Observed Band :	84kD
Cell Pathway :	Adherens_Junction
Background :	<p>This gene is a member of the cadherin superfamily. The gene product is composed of five cadherin repeat domains and a cytoplasmic tail similar to the highly conserved cytoplasmic region of classical cadherins. Expressed predominantly in the brain, this putative calcium-dependent cell adhesion protein may play an important role in morphogenesis and tissue formation in neural and non-neural cells during development and maintenance of the brain and neuroendocrine organs. [provided by RefSeq, Jul 2008],</p>
Function :	<p>function:Cadherins are calcium dependent cell adhesion proteins. They preferentially interact with themselves in a homophilic manner in connecting cells; cadherins may thus contribute to the sorting of heterogeneous cell types. PB-cadherins may have a role in the morphological organization of pituitary gland and brain tissues.,similarity:Contains 5 cadherin domains.,</p>
Subcellular Location :	Cell membrane ; Single-pass type I membrane protein .
Expression :	Brain,Testis,
Sort :	3033
No4 :	1
Host :	Rabbit
Modifications :	Unmodified

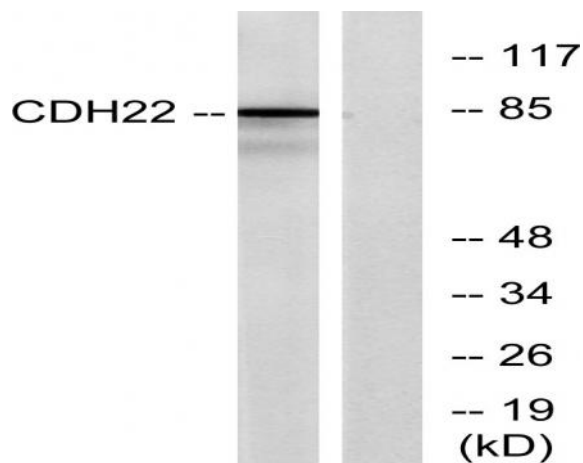
Products Images



Immunofluorescence analysis of NIH/3T3 cells, using CDH22 Antibody. The picture on the right is blocked with the synthesized peptide.



Immunohistochemistry analysis of paraffin-embedded human brain tissue, using CDH22 Antibody. The picture on the right is blocked with the synthesized peptide.



Western blot analysis of lysates from rat brain cells, using CDH22 Antibody. The lane on the right is blocked with the synthesized peptide.