

Cadherin-19 Polyclonal Antibody

Catalog No :	YT0596
Reactivity :	Human;Rat;Mouse;
Applications :	WB;IHC;IF;ELISA
Target :	Cadherin-19
Gene Name :	CDH19
Protein Name :	Cadherin-19
Human Gene Id :	28513
Human Swiss Prot No :	Q9H159
Immunogen :	The antiserum was produced against synthesized peptide derived from human CDH19. AA range:371-420
Specificity :	Cadherin-19 Polyclonal Antibody detects endogenous levels of Cadherin-19 protein.
Formulation :	Liquid in PBS containing 50% glycerol, 0.5% BSA and 0.02% sodium azide.
Source :	Polyclonal, Rabbit,IgG
Dilution :	WB 1:500 - 1:2000. IHC 1:100 - 1:300. IF 1:200 - 1:1000. ELISA: 1:20000. Not yet tested in other applications.
Purification :	The antibody was affinity-purified from rabbit antiserum by affinity-chromatography using epitope-specific immunogen.
Concentration :	1 mg/ml
Storage Stability :	-15°C to -25°C/1 year(Do not lower than -25°C)
Observed Band :	87kD

Cell Pathway : Adherens_Junction

Background : This gene is one of three related type II cadherin genes situated in a cluster on chromosome 18. The encoded protein is a calcium dependent cell-cell adhesion glycoprotein containing five extracellular cadherin repeats. Loss of cadherins may be associated with cancer formation. Alternative splicing results in multiple transcript variants for this gene. [provided by RefSeq, Aug 2012],

Function : function:Cadherins are calcium dependent cell adhesion proteins. They preferentially interact with themselves in a homophilic manner in connecting cells; cadherins may thus contribute to the sorting of heterogeneous cell types.,similarity:Contains 5 cadherin domains.,tissue specificity:Expressed in many tissues, with the exception of uterus.,

Subcellular Location : Cell membrane; Single-pass type I membrane protein.

Expression : Expressed in many tissues, with the exception of uterus.

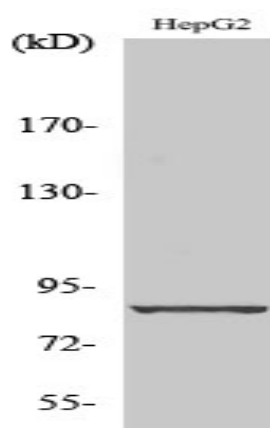
Sort : 3031

No4 : 1

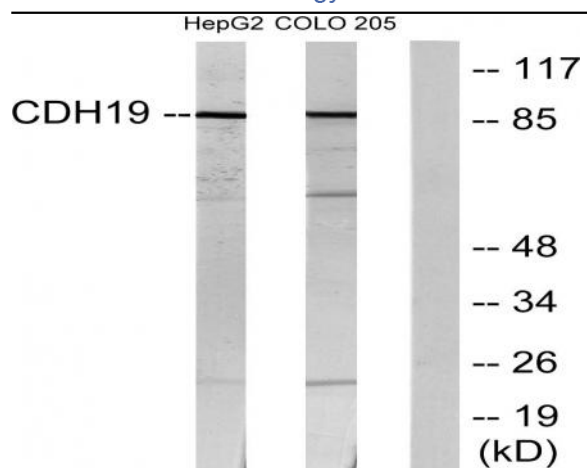
Host : Rabbit

Modifications : Unmodified

Products Images



Western Blot analysis of various cells using Cadherin-19 Polyclonal Antibody diluted at 1:1000



Western blot analysis of lysates from HepG2 and COLO205 cells, using CDH19 Antibody. The lane on the right is blocked with the synthesized peptide.