

CA VIII Polyclonal Antibody

Catalog No :	YT0579
Reactivity :	Human;Mouse;Rat
Applications :	WB;IHC;IF;ELISA
Target :	CA VIII
Fields :	>>Nitrogen metabolism;>>Metabolic pathways
Gene Name :	CA8
Protein Name :	Carbonic anhydrase-related protein
Human Gene Id :	767
Human Swiss Prot No :	P35219
Mouse Gene Id :	12319
Mouse Swiss Prot No :	P28651
Rat Gene Id :	297814
Rat Swiss Prot No :	Q5PPN4
Immunogen :	Synthesized peptide derived from the Internal region of human CA VIII.
Specificity :	CA VIII Polyclonal Antibody detects endogenous levels of CA VIII protein.
Formulation :	Liquid in PBS containing 50% glycerol, 0.5% BSA and 0.02% sodium azide.
Source :	Polyclonal, Rabbit,IgG
Dilution :	IHC: 100-300.WB 1:500 - 1:2000. ELISA: 1:40000.. IF 1:50-200
Purification :	The antibody was affinity-purified from rabbit antiserum by affinity-

chromatography using epitope-specific immunogen.

Concentration : 1 mg/ml

Storage Stability : -15°C to -25°C/1 year(Do not lower than -25°C)

Molecularweight : 33kD

Cell Pathway : Nitrogen metabolism;

Background : The protein encoded by this gene was initially named CA-related protein because of sequence similarity to other known carbonic anhydrase genes. However, the gene product lacks carbonic anhydrase activity (i.e., the reversible hydration of carbon dioxide). The gene product continues to carry a carbonic anhydrase designation based on clear sequence identity to other members of the carbonic anhydrase gene family. The absence of CA8 gene transcription in the cerebellum of the lurcher mutant in mice with a neurologic defect suggests an important role for this acatalytic form. Mutations in this gene are associated with cerebellar ataxia, mental retardation, and dysequilibrium syndrome 3 (CMARQ3). Polymorphisms in this gene are associated with osteoporosis, and overexpression of this gene in osteosarcoma cells suggests an oncogenic role. Alternative splicing results in multiple transcript variants. [provid

Function : function:Does not have a carbonic anhydrase catalytic activity.,similarity:Belongs to the alpha-carbonic anhydrase family.,

Subcellular Location : cytoplasm,

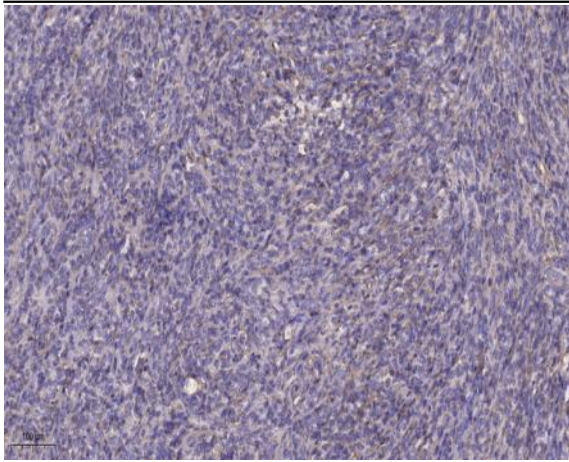
Sort : 2968

No4 : 1

Host : Rabbit

Modifications : Unmodified

Products Images



Immunohistochemical analysis of paraffin-embedded human Colon cancer. 1, Antibody was diluted at 1:200(4° overnight). 2, Tris-EDTA,pH9.0 was used for antigen retrieval. 3,Secondary antibody was diluted at 1:200(room temperature, 45min).