

## CA VA Polyclonal Antibody

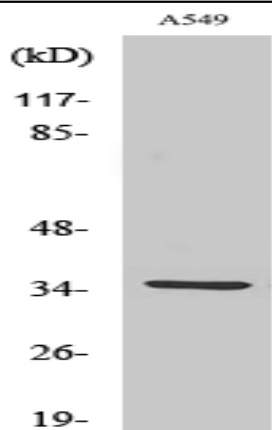
<b>Catalog No :</b>	YT0576
<b>Reactivity :</b>	Human
<b>Applications :</b>	WB;ELISA
<b>Target :</b>	CA VA
<b>Fields :</b>	>>Nitrogen metabolism;>>Metabolic pathways
<b>Gene Name :</b>	CA5A
<b>Protein Name :</b>	Carbonic anhydrase 5A mitochondrial
<b>Human Gene Id :</b>	763
<b>Human Swiss Prot No :</b>	P35218
<b>Mouse Swiss Prot No :</b>	P23589
<b>Immunogen :</b>	The antiserum was produced against synthesized peptide derived from human CA5A. AA range:171-220
<b>Specificity :</b>	CA VA Polyclonal Antibody detects endogenous levels of CA VA protein.
<b>Formulation :</b>	Liquid in PBS containing 50% glycerol, 0.5% BSA and 0.02% sodium azide.
<b>Source :</b>	Polyclonal, Rabbit,IgG
<b>Dilution :</b>	WB 1:500 - 1:2000. ELISA: 1:40000. Not yet tested in other applications.
<b>Purification :</b>	The antibody was affinity-purified from rabbit antiserum by affinity-chromatography using epitope-specific immunogen.
<b>Concentration :</b>	1 mg/ml
<b>Storage Stability :</b>	-15°C to -25°C/1 year(Do not lower than -25°C)

---

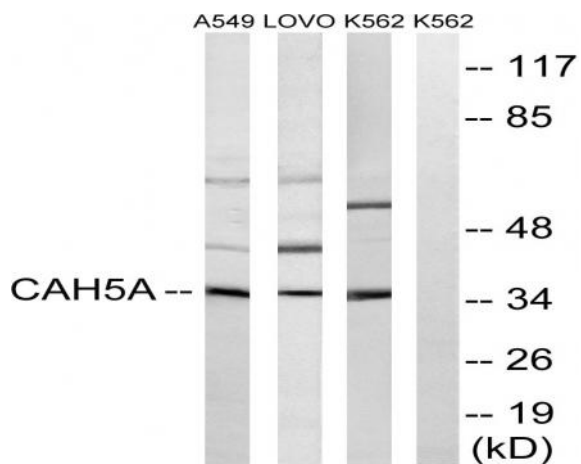
<b>Observed Band :</b>	35kD
<b>Cell Pathway :</b>	Nitrogen metabolism;
<b>Background :</b>	Carbonic anhydrases (CAs) are a large family of zinc metalloenzymes that catalyze the reversible hydration of carbon dioxide. They participate in a variety of biological processes, including respiration, calcification, acid-base balance, bone resorption, and the formation of aqueous humor, cerebrospinal fluid, saliva, and gastric acid. They show extensive diversity in tissue distribution and in their subcellular localization. CA VA is localized in the mitochondria and expressed primarily in the liver. It may play an important role in ureagenesis and gluconeogenesis. CA5A gene maps to chromosome 16q24.3 and an unprocessed pseudogene has been assigned to 16p12-p11.2. [provided by RefSeq, Jul 2008],
<b>Function :</b>	catalytic activity:H(2)CO(3) = CO(2) + H(2)O.,cofactor:Zinc.,function:Reversible hydration of carbon dioxide.,similarity:Belongs to the alpha-carbonic anhydrase family.,
<b>Subcellular Location :</b>	Mitochondrion .
<b>Expression :</b>	Liver,Umbilical cord,
<b>Sort :</b>	2965
<b>No4 :</b>	1
<b>Host :</b>	Rabbit
<b>Modifications :</b>	Unmodified

---

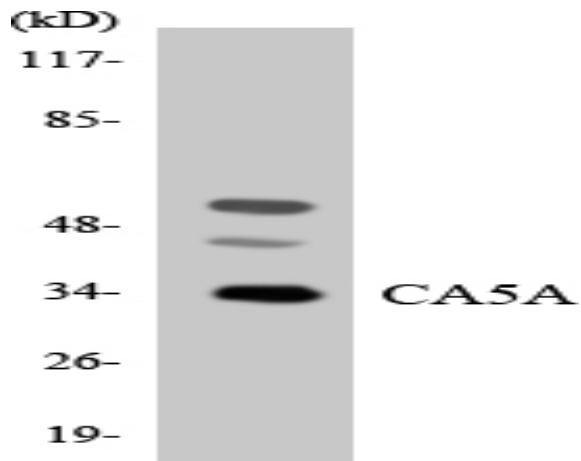
## Products Images



Western Blot analysis of various cells using CA VA Polyclonal Antibody



Western blot analysis of lysates from A549, LOVO, and K562 cells, using CA5A Antibody. The lane on the right is blocked with the synthesized peptide.



Western blot analysis of the lysates from K562 cells using CA5A antibody.