

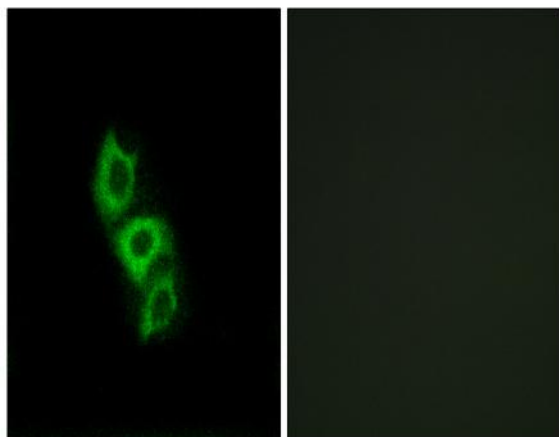
## ApoL5 Polyclonal Antibody

<b>Catalog No :</b>	YT0281
<b>Reactivity :</b>	Human
<b>Applications :</b>	IHC;IF;ELISA
<b>Target :</b>	ApoL5
<b>Gene Name :</b>	APOL5
<b>Protein Name :</b>	Apolipoprotein L5
<b>Human Gene Id :</b>	80831
<b>Human Swiss Prot No :</b>	Q9BWW9
<b>Immunogen :</b>	The antiserum was produced against synthesized peptide derived from human APOL5. AA range:384-433
<b>Specificity :</b>	ApoL5 Polyclonal Antibody detects endogenous levels of ApoL5 protein.
<b>Formulation :</b>	Liquid in PBS containing 50% glycerol, 0.5% BSA and 0.02% sodium azide.
<b>Source :</b>	Polyclonal, Rabbit,IgG
<b>Dilution :</b>	IHC 1:100 - 1:300. IF 1:200 - 1:1000. ELISA: 1:40000. Not yet tested in other applications.
<b>Purification :</b>	The antibody was affinity-purified from rabbit antiserum by affinity-chromatography using epitope-specific immunogen.
<b>Concentration :</b>	1 mg/ml
<b>Storage Stability :</b>	-15°C to -25°C/1 year(Do not lower than -25°C)
<b>Molecularweight :</b>	47kD
<b>Background :</b>	This gene is a member of the apolipoprotein L gene family. The encoded protein

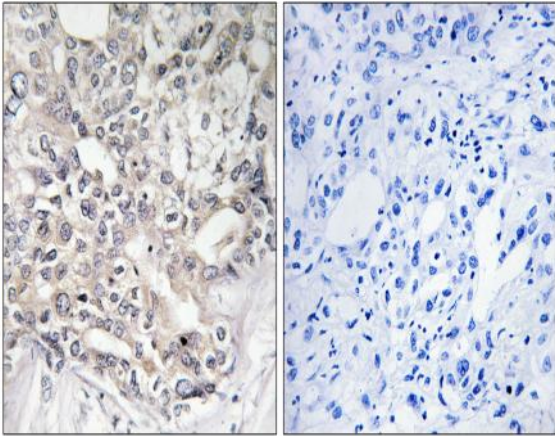
is found in the cytoplasm, where it may affect the movement of lipids or allow the binding of lipids to organelles. [provided by RefSeq, Jul 2008],

<b>Function :</b>	function:May affect the movement of lipids in the cytoplasm or allow the binding of lipids to organelles.,similarity:Belongs to the apolipoprotein L family.,tissue specificity:Low level of expression; detected in uterus, testis, skeletal muscle and stomach.,
<b>Subcellular Location :</b>	Cytoplasm .
<b>Expression :</b>	Low level of expression; detected in uterus, testis, skeletal muscle and stomach.
<b>Sort :</b>	2165
<b>No4 :</b>	1
<b>Host :</b>	Rabbit
<b>Modifications :</b>	Unmodified

## Products Images



Immunofluorescence analysis of A549 cells, using APOL5 Antibody. The picture on the right is blocked with the synthesized peptide.



Immunohistochemistry analysis of paraffin-embedded human liver carcinoma tissue, using APOL5 Antibody. The picture on the right is blocked with the synthesized peptide.