

## ApoL3 Polyclonal Antibody

<b>Catalog No :</b>	YT0279
<b>Reactivity :</b>	Human
<b>Applications :</b>	IHC;IF;ELISA
<b>Target :</b>	ApoL3
<b>Gene Name :</b>	APOL3
<b>Protein Name :</b>	Apolipoprotein L3
<b>Human Gene Id :</b>	80833
<b>Human Swiss Prot No :</b>	O95236
<b>Immunogen :</b>	Synthesized peptide derived from ApoL3 . at AA range: 100-180
<b>Specificity :</b>	ApoL3 Polyclonal Antibody detects endogenous levels of ApoL3 protein.
<b>Formulation :</b>	Liquid in PBS containing 50% glycerol, 0.5% BSA and 0.02% sodium azide.
<b>Source :</b>	Polyclonal, Rabbit,IgG
<b>Dilution :</b>	IHC 1:100 - 1:300. ELISA: 1:40000.. IF 1:50-200
<b>Purification :</b>	The antibody was affinity-purified from rabbit antiserum by affinity-chromatography using epitope-specific immunogen.
<b>Concentration :</b>	1 mg/ml
<b>Storage Stability :</b>	-15°C to -25°C/1 year(Do not lower than -25°C)
<b>Molecularweight :</b>	44kD
<b>Background :</b>	This gene is a member of the apolipoprotein L gene family, and it is present in a cluster with other family members on chromosome 22. The encoded protein is found in the cytoplasm, where it may affect the movement of lipids, including

cholesterol, and/or allow the binding of lipids to organelles. In addition, expression of this gene is up-regulated by tumor necrosis factor-alpha in endothelial cells lining the normal and atherosclerotic iliac artery and aorta. Alternative splicing results in multiple transcript variants. [provided by RefSeq, Mar 2015],

**Function :**

function:May affect the movement of lipids in the cytoplasm or allow the binding of lipids to organelles.,induction:In vitro, is responsive to tumor necrosis factor.,similarity:Belongs to the apolipoprotein L family.,tissue specificity:Widely expressed; the highest levels are in prostate, lung and placenta; also detected in kidney, bone marrow, spleen, thymus, spinal cord, adrenal gland, salivary gland, trachea and mammary gland; levels are low in brain, heart, fetal liver, pancreas and testis.,

**Subcellular Location :**

Cytoplasm .

**Expression :**

Widely expressed; the highest levels are in prostate, lung and placenta; also detected in kidney, bone marrow, spleen, thymus, spinal cord, adrenal gland, salivary gland, trachea and mammary gland; levels are low in brain, heart, fetal liver, pancreas and testis.

**Sort :**

2163

**No4 :**

1

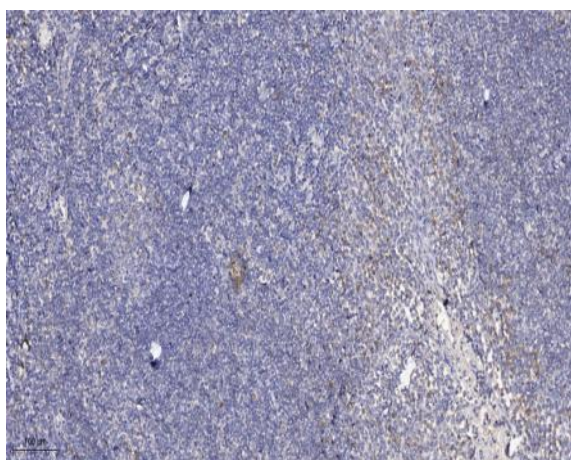
**Host :**

Rabbit

**Modifications :**

Unmodified

## Products Images



Immunohistochemical analysis of paraffin-embedded human tonsil. 1, Antibody was diluted at 1:200(4° overnight). 2, Tris-EDTA,pH9.0 was used for antigen retrieval. 3,Secondary antibody was diluted at 1:200(room temperature, 30min).