

## APC5 Polyclonal Antibody

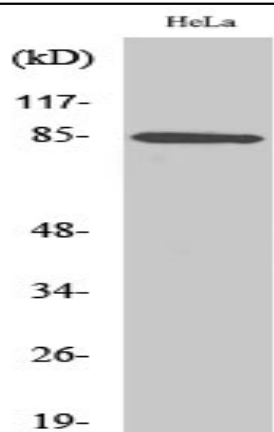
<b>Catalog No :</b>	YT0262
<b>Reactivity :</b>	Human;Rat;Mouse;
<b>Applications :</b>	WB;ELISA
<b>Target :</b>	APC5
<b>Fields :</b>	>>Cell cycle;>>Oocyte meiosis;>>Ubiquitin mediated proteolysis;>>IL-17 signaling pathway;>>Progesterone-mediated oocyte maturation;>>Human T-cell leukemia virus 1 infection
<b>Gene Name :</b>	ANAPC5
<b>Protein Name :</b>	Anaphase-promoting complex subunit 5
<b>Human Gene Id :</b>	51433
<b>Human Swiss Prot No :</b>	Q9UJX4
<b>Mouse Swiss Prot No :</b>	Q8BTZ4
<b>Immunogen :</b>	The antiserum was produced against synthesized peptide derived from human ANAPC5. AA range:151-200
<b>Specificity :</b>	APC5 Polyclonal Antibody detects endogenous levels of APC5 protein.
<b>Formulation :</b>	Liquid in PBS containing 50% glycerol, 0.5% BSA and 0.02% sodium azide.
<b>Source :</b>	Polyclonal, Rabbit,IgG
<b>Dilution :</b>	WB 1:500 - 1:2000. ELISA: 1:5000. Not yet tested in other applications.
<b>Purification :</b>	The antibody was affinity-purified from rabbit antiserum by affinity-chromatography using epitope-specific immunogen.
<b>Concentration :</b>	1 mg/ml

---

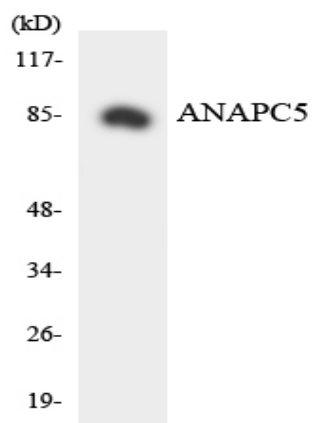
<b>Storage Stability :</b>	-15°C to -25°C/1 year(Do not lower than -25°C)
<b>Observed Band :</b>	85kD
<b>Cell Pathway :</b>	Cell_Cycle_G1S;Cell_Cycle_G2M_DNA;Oocyte meiosis;Ubiquitin mediated proteolysis;Progesterone-mediated oocyte maturation;
<b>Background :</b>	This gene encodes a tetratricopeptide repeat-containing component of the anaphase promoting complex/cyclosome (APC/C), a large E3 ubiquitin ligase that controls cell cycle progression by targeting a number of cell cycle regulators such as B-type cyclins for 26S proteasome-mediated degradation through ubiquitination. The encoded protein is required for the proper ubiquitination function of APC/C and for the interaction of APC/C with transcription coactivators. It also interacts with polyA binding protein and represses internal ribosome entry site-mediated translation. Multiple transcript variants encoding different isoforms have been found for this gene. These differences cause translation initiation at a downstream AUG and result in a shorter protein (isoform b), compared to isoform a. [provided by RefSeq, Nov 2008],
<b>Function :</b>	function:Component of the anaphase promoting complex/cyclosome (APC/C), a cell cycle-regulated ubiquitin ligase that controls progression through mitosis and the G1 phase of the cell cycle.,pathway:Protein modification; protein ubiquitination.,similarity:Belongs to the APC5 family.,similarity:Contains 4 TPR repeats.,subunit:The APC/C is composed of at least 11 subunits.,
<b>Subcellular Location :</b>	Nucleus . Cytoplasm, cytoskeleton, spindle .
<b>Expression :</b>	Brain,Cerebellum,Cervix,Epithelium,Lung,Oesophagus,Periodontal liga
<b>Sort :</b>	2125
<b>No4 :</b>	1
<b>Host :</b>	Rabbit
<b>Modifications :</b>	Unmodified

---

## Products Images



Western Blot analysis of various cells using APC5 Polyclonal Antibody



Western blot analysis of the lysates from HeLa cells using ANAPC5 antibody.