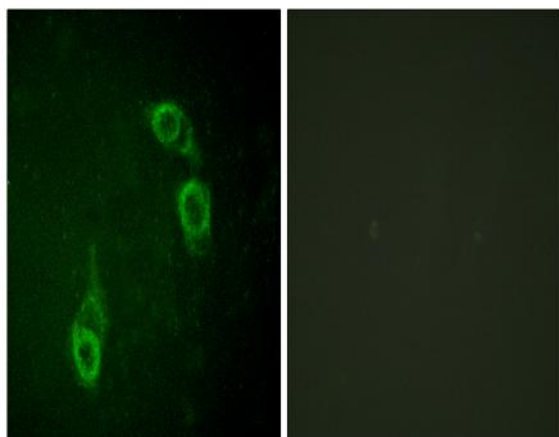


APC1 Polyclonal Antibody

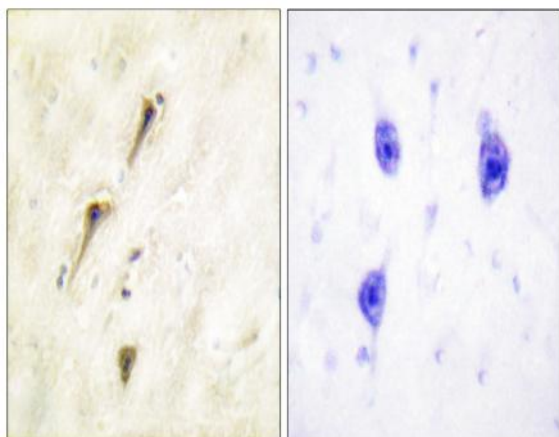
Catalog No :	YT0259
Reactivity :	Human;Mouse;Rat
Applications :	IHC;IF;ELISA
Target :	APC1
Fields :	>>Cell cycle;>>Oocyte meiosis;>>Ubiquitin mediated proteolysis;>>Progesterone-mediated oocyte maturation;>>Human T-cell leukemia virus 1 infection
Gene Name :	ANAPC1
Protein Name :	Anaphase-promoting complex subunit 1
Human Gene Id :	64682
Human Swiss Prot No :	Q9H1A4
Mouse Gene Id :	17222
Mouse Swiss Prot No :	P53995
Immunogen :	The antiserum was produced against synthesized peptide derived from human APC1. AA range:654-703
Specificity :	APC1 Polyclonal Antibody detects endogenous levels of APC1 protein.
Formulation :	Liquid in PBS containing 50% glycerol, 0.5% BSA and 0.02% sodium azide.
Source :	Polyclonal, Rabbit,IgG
Dilution :	IHC 1:100 - 1:300. IF 1:200 - 1:1000. ELISA: 1:10000. Not yet tested in other applications.
Purification :	The antibody was affinity-purified from rabbit antiserum by affinity-chromatography using epitope-specific immunogen.

Concentration :	1 mg/ml
Storage Stability :	-15°C to -25°C/1 year(Do not lower than -25°C)
Molecularweight :	217kD
Cell Pathway :	Cell_Cycle_G1S;Cell_Cycle_G2M_DNA;Oocyte meiosis;Ubiquitin mediated proteolysis;Progesterone-mediated oocyte maturation;
Background :	This gene encodes a subunit of the anaphase-promoting complex. This complex is an E3 ubiquitin ligase that regulates progression through the metaphase to anaphase portion of the cell cycle by ubiquitinating proteins which targets them for degradation. [provided by RefSeq, Dec 2011],
Function :	function:Component of the anaphase promoting complex/cyclosome (APC/C), a cell cycle-regulated E3 ubiquitin ligase that controls progression through mitosis and the G1 phase of the cell cycle.,pathway:Protein modification; protein ubiquitination.,PTM:Phosphorylated. Phosphorylation on Ser-355 occurs specifically during mitosis.,similarity:Belongs to the APC1 family.,similarity:Contains 4 PC repeats.,subunit:The APC/C is composed of at least 11 subunits.,
Subcellular Location :	nucleoplasm,anaphase-promoting complex,cytosol,
Expression :	Colon,Epithelium,Ovary,Placenta,
Sort :	2123
No4 :	1
Host :	Rabbit
Modifications :	Unmodified

Products Images



Immunofluorescence analysis of HepG2 cells, using APC1 Antibody. The picture on the right is blocked with the synthesized peptide.



Immunohistochemistry analysis of paraffin-embedded human brain tissue, using APC1 Antibody. The picture on the right is blocked with the synthesized peptide.