

BTF Polyclonal Antibody

Catalog No :	YT0542
Reactivity :	Human;Mouse;Rat
Applications :	WB;ELISA
Target :	BCLAF1
Gene Name :	BCLAF1
Protein Name :	Bcl-2-associated transcription factor 1
Human Gene Id :	9774
Human Swiss Prot No :	Q9NYF8
Mouse Gene Id :	72567
Mouse Swiss Prot No :	Q8K019
Immunogen :	The antiserum was produced against synthesized peptide derived from human BCLAF1. AA range:281-330
Specificity :	BTF Polyclonal Antibody detects endogenous levels of BTF protein.
Formulation :	Liquid in PBS containing 50% glycerol, 0.5% BSA and 0.02% sodium azide.
Source :	Polyclonal, Rabbit,IgG
Dilution :	WB 1:500 - 1:2000. ELISA: 1:10000. Not yet tested in other applications.
Purification :	The antibody was affinity-purified from rabbit antiserum by affinity-chromatography using epitope-specific immunogen.
Concentration :	1 mg/ml
Storage Stability :	-15°C to -25°C/1 year(Do not lower than -25°C)

Observed Band : 106kD

Background : This gene encodes a transcriptional repressor that interacts with several members of the BCL2 family of proteins. Overexpression of this protein induces apoptosis, which can be suppressed by co-expression of BCL2 proteins. The protein localizes to dot-like structures throughout the nucleus, and redistributes to a zone near the nuclear envelope in cells undergoing apoptosis. Multiple transcript variants encoding different isoforms have been found for this gene. [provided by RefSeq, Jul 2008],

Function : function:Death-promoting transcriptional repressor.,sequence caution:Contaminating sequence. Potential poly-A sequence.,subunit:Interacts with Bcl-2 related proteins, EMD, with the adenovirus E1B 19 kDa protein and with DNA.,tissue specificity:Ubiquitous.,

Subcellular Location : Cytoplasm. Nucleus. Nucleus speckle . Nucleus, nucleoplasm .

Expression : Ubiquitous.

Tag : orthogonal

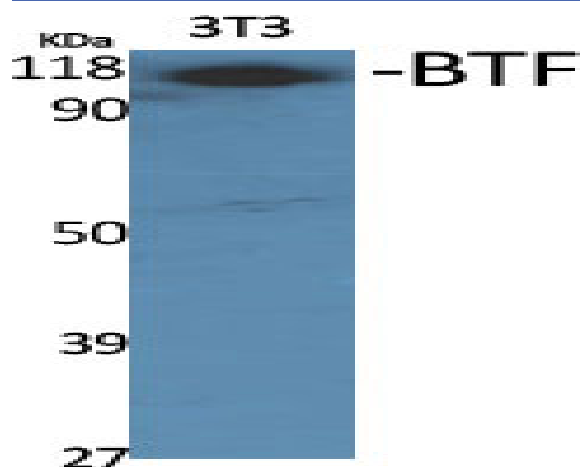
Sort : 2892

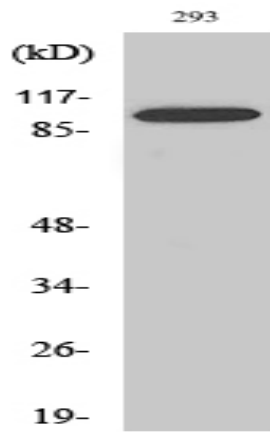
No4 : 1

Host : Rabbit

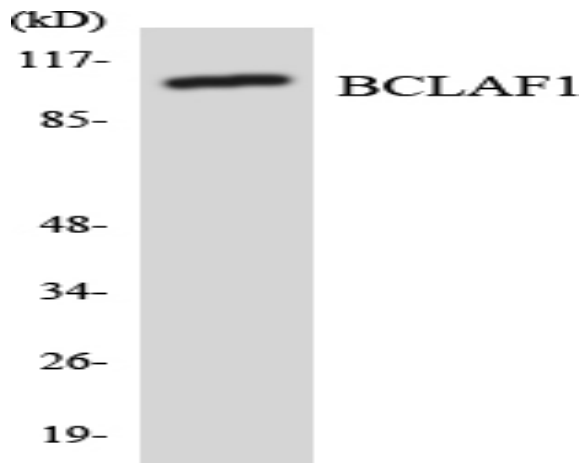
Modifications : Unmodified

Products Images





Western Blot analysis of A549 cells using BTF Polyclonal Antibody



Western blot analysis of the lysates from HeLa cells using BCLAF1 antibody.