

## Apaf-1-ALT Polyclonal Antibody

|                              |   |
|------------------------------|---|
| <b>Catalog No :</b>          | YT0255  |
| <b>Reactivity :</b>          | Human;Rat;Mouse;  |
| <b>Applications :</b>        | WB;IHC;IF;ELISA   |
| <b>Target :</b>              | APAF1   |
| <b>Fields :</b>              | >>Platinum drug resistance;>>p53 signaling pathway;>>Apoptosis;>>Apoptosis - multiple species;>>Alzheimer disease;>>Parkinson disease;>>Amyotrophic lateral sclerosis;>>Huntington disease;>>Prion disease;>>Pathways of neurodegeneration - multiple diseases;>>Legionellosis;>>Tuberculosis;>>Hepatitis C;>>Hepatitis B;>>Measles;>>Influenza A;>>Herpes simplex virus 1 infection;>>Epstein-Barr virus infection;>>Pathways in cancer;>>Small cell lung cancer;>>Lipid and atherosclerosis |
| <b>Gene Name :</b>           | APAF1   |
| <b>Protein Name :</b>        | Apoptotic protease-activating factor 1  |
| <b>Human Gene Id :</b>       | 317   |
| <b>Human Swiss Prot No :</b> | O14727-6  |
| <b>Immunogen :</b>           | The antiserum was produced against synthesized peptide derived from human APAF-1-ALT. AA range:289-338  |
| <b>Specificity :</b>         | Apaf-1-ALT Polyclonal Antibody detects endogenous levels of Apaf-1-ALT protein.   |
| <b>Formulation :</b>         | Liquid in PBS containing 50% glycerol, 0.5% BSA and 0.02% sodium azide.   |
| <b>Source :</b>              | Polyclonal, Rabbit,IgG  |
| <b>Dilution :</b>            | WB 1:500 - 1:2000. IHC 1:100 - 1:300. IF 1:200 - 1:1000. ELISA: 1:10000. Not yet tested in other applications.  |
| <b>Purification :</b>        | The antibody was affinity-purified from rabbit antiserum by affinity-   |

chromatography using epitope-specific immunogen.

---

**Concentration :** 1 mg/ml

---

**Storage Stability :** -15°C to -25°C/1 year(Do not lower than -25°C)

---

**Observed Band :** 27kD

---

**Background :** This gene encodes a cytoplasmic protein that initiates apoptosis. This protein contains several copies of the WD-40 domain, a caspase recruitment domain (CARD), and an ATPase domain (NB-ARC). Upon binding cytochrome c and dATP, this protein forms an oligomeric apoptosome. The apoptosome binds and cleaves caspase 9 preproprotein, releasing its mature, activated form. Activated caspase 9 stimulates the subsequent caspase cascade that commits the cell to apoptosis. Alternative splicing results in several transcript variants encoding different isoforms. [provided by RefSeq, Jul 2008],

---

**Function :** domain:The CARD domain mediates interaction with APIP.,function:Oligomeric Apaf-1 mediates the cytochrome c-dependent autocatalytic activation of pro-caspase-9 (Apaf-3), leading to the activation of caspase-3 and apoptosis. This activation requires ATP. Isoform 6 is less effective in inducing apoptosis.,induction:By E2F and p53 in apoptotic neurons.,similarity:Contains 1 CARD domain.,similarity:Contains 1 NB-ARC domain.,similarity:Contains 13 WD repeats.,subunit:Monomer. Oligomerizes upon binding of cytochrome c and dATP. Oligomeric Apaf-1 and pro-caspase-9 bind to each other via their respective NH2-terminal CARD domains and consecutively mature caspase-9 is released from the complex. Pro-caspase-3 is recruited into the Apaf-1-pro-caspase-9 complex via interaction with pro-caspase-9. Interacts with APIP.,tissue specificity:Ubiquitous. Highest levels of expression in adult spleen and per

---

**Subcellular Location :** Cytoplasm .

---

**Expression :** Ubiquitous. Highest levels of expression in adult spleen and peripheral blood leukocytes, and in fetal brain, kidney and lung. Isoform 1 is expressed in heart, kidney and liver.

---

**Tag :** hot

---

**Sort :** 2115

---

**No4 :** 1

---

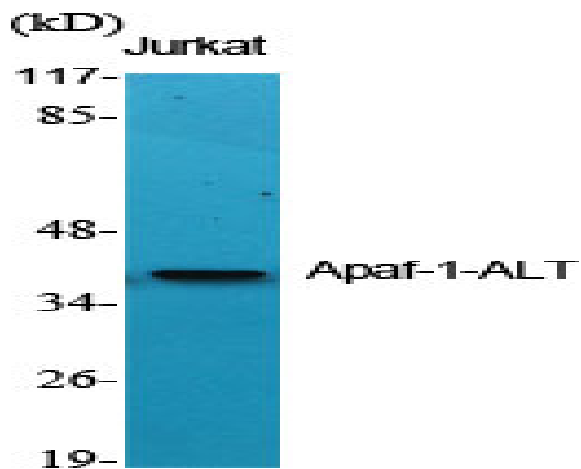
**Host :** Rabbit

---

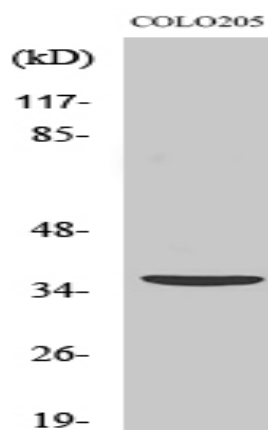
**Modifications :** Unmodified

---

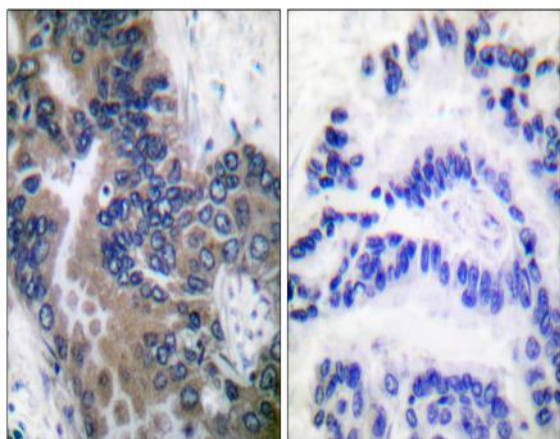
## Products Images



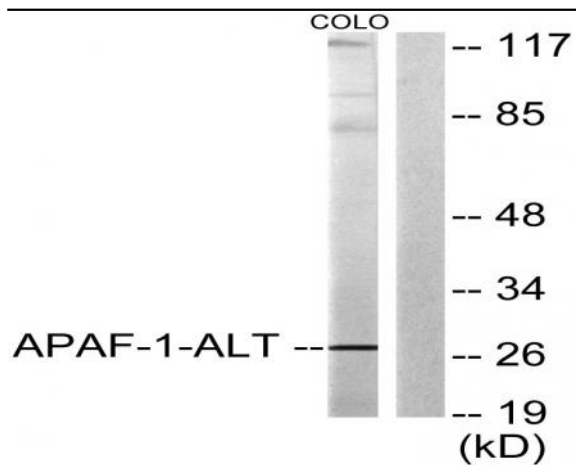
Western Blot analysis of various cells using Apaf-1-ALT Polyclonal Antibody diluted at 1:500



Western Blot analysis of COLO205 cells using Apaf-1-ALT Polyclonal Antibody diluted at 1:500



Immunohistochemistry analysis of paraffin-embedded human lung carcinoma tissue, using APAF-1-ALT Antibody. The picture on the right is blocked with the synthesized peptide.



Western blot analysis of lysates from COLO205 cells, using APAF-1-ALT Antibody. The lane on the right is blocked with the synthesized peptide.