

**BRCAA1 Polyclonal Antibody**

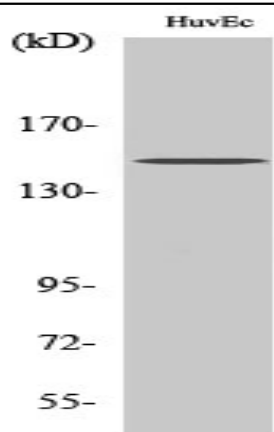
|                              |   |
|------------------------------|---|
| <b>Catalog No :</b>          | YT0521  |
| <b>Reactivity :</b>          | Human;Mouse;Rat   |
| <b>Applications :</b>        | WB;ELISA  |
| <b>Target :</b>              | BRCAA1  |
| <b>Gene Name :</b>           | ARID4B  |
| <b>Protein Name :</b>        | AT-rich interactive domain-containing protein 4B  |
| <b>Human Gene Id :</b>       | 51742   |
| <b>Human Swiss Prot No :</b> | Q4LE39  |
| <b>Mouse Gene Id :</b>       | 94246   |
| <b>Mouse Swiss Prot No :</b> | A2CG63  |
| <b>Rat Gene Id :</b>         | 84481   |
| <b>Rat Swiss Prot No :</b>   | Q9JKB5  |
| <b>Immunogen :</b>           | The antiserum was produced against synthesized peptide derived from human BRCAA1. AA range:761-810                    |
| <b>Specificity :</b>         | BRCAA1 Polyclonal Antibody detects endogenous levels of BRCAA1 protein.   |
| <b>Formulation :</b>         | Liquid in PBS containing 50% glycerol, 0.5% BSA and 0.02% sodium azide.   |
| <b>Source :</b>              | Polyclonal, Rabbit,IgG  |
| <b>Dilution :</b>            | WB 1:500 - 1:2000. ELISA: 1:10000. Not yet tested in other applications.  |
| <b>Purification :</b>        | The antibody was affinity-purified from rabbit antiserum by affinity-chromatography using epitope-specific immunogen. |

---

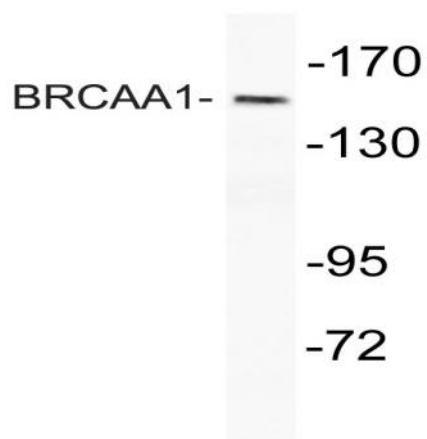
|                               |  |
|-------------------------------|--|
| <b>Concentration :</b>        | 1 mg/ml  |
| <b>Storage Stability :</b>    | -15°C to -25°C/1 year(Do not lower than -25°C)   |
| <b>Observed Band :</b>        | 148kD  |
| <b>Background :</b>           | <p>This gene encodes a protein with sequence similarity to retinoblastoma-binding protein-1. The encoded protein is a subunit of the histone deacetylase-dependant SIN3A transcriptional corepressor complex, which functions in diverse cellular processes including proliferation, differentiation, apoptosis, oncogenesis, and cell fate determination. The gene product is recognized by IgG antibody isolated from a breast cancer patient and appears to be a molecular marker associated with a broad range of human malignancies. Alternate transcriptional splice variants encoding different isoforms have been characterized. [provided by RefSeq, Jul 2008],</p>   |
| <b>Function :</b>             | <p>domain:The ARID domain is involved in stabilizing the mSin3A corepressor complex on DNA.,domain:The C-terminus mediates interaction with mSin3A corepressor complex.,domain:The N-terminus is involved in transcriptional repression by HDAC-independent mechanisms.,function:Acts as a transcriptional repressor. May function in the assembly and/or enzymatic activity of the Sin3A corepressor complex or in mediating interactions between the complex and other regulatory complexes.,similarity:Contains 1 ARID domain.,subcellular location:Cytoplasmic in breast cancer cells.,subunit:Component of a Sin3A corepressor complex consisting of SIN3A, SAP130, SUDS3/SAP45, SAP180, HDAC1 and HDAC2.,tissue specificity:Highly expressed in the testis and in breast, lung, colon, pancreatic and ovarian cancers. Expressed at low levels in the thymus, prostate and ovary.,</p> |
| <b>Subcellular Location :</b> | Nucleus . Cytoplasm . Cytoplasmic in breast cancer cells. .  |
| <b>Expression :</b>           | Highly expressed in the testis and in breast, lung, colon, pancreatic and ovarian cancers. Expressed at low levels in the thymus, prostate and ovary.  |
| <b>Sort :</b>                 | 2856   |
| <b>No4 :</b>                  | 1  |
| <b>Host :</b>                 | Rabbit   |
| <b>Modifications :</b>        | Unmodified   |

---

## Products Images



Western Blot analysis of various cells using BRCAA1 Polyclonal Antibody



Western blot analysis of lysate from HUVEC cells, using BRCAA1 antibody.