

BRAF35 Polyclonal Antibody

Catalog No :	YT0515
Reactivity :	Human;Mouse;
Applications :	WB;IHC;IF;ELISA
Target :	BRAF35
Gene Name :	HMG20B
Protein Name :	SWI/SNF-related matrix-associated actin-dependent regulator of chromatin subfamily E member 1-related
Human Gene Id :	10362
Human Swiss Prot No :	Q9P0W2
Mouse Swiss Prot No :	Q9Z104
Immunogen :	The antiserum was produced against synthesized peptide derived from human HMG20B. AA range:1-50
Specificity :	BRAF35 Polyclonal Antibody detects endogenous levels of BRAF35 protein.
Formulation :	Liquid in PBS containing 50% glycerol, 0.5% BSA and 0.02% sodium azide.
Source :	Polyclonal, Rabbit,IgG
Dilution :	WB 1:500 - 1:2000. IHC 1:100 - 1:300. IF 1:200 - 1:1000. ELISA: 1:20000. Not yet tested in other applications.
Purification :	The antibody was affinity-purified from rabbit antiserum by affinity-chromatography using epitope-specific immunogen.
Concentration :	1 mg/ml
Storage Stability :	-15°C to -25°C/1 year(Do not lower than -25°C)

Observed Band : 36kD

Background : function:Required for correct progression through G2 phase of the cell cycle and entry into mitosis. Required for RCOR1/CoREST mediated repression of neuronal specific gene promoters.,sequence caution:Translation N-terminally extended.,similarity:Contains 1 HMG box DNA-binding domain.,subcellular location:Localized to condensed chromosomes in mitosis in conjunction with BRCA2.,subunit:Component of a BHC histone deacetylase complex that contains HDAC1, HDAC2, HMG20B/BRAF35, AOF2/LSD1, RCOR1/CoREST and PHF21A/BHC80. The BHC complex may also contain ZMYM2, ZNF217, ZMYM3, GSE1 and GTF2I. Interacts with the BRCA2 tumor suppressor protein.,tissue specificity:Ubiquitously expressed in adult tissues.,

Function : function:Required for correct progression through G2 phase of the cell cycle and entry into mitosis. Required for RCOR1/CoREST mediated repression of neuronal specific gene promoters.,sequence caution:Translation N-terminally extended.,similarity:Contains 1 HMG box DNA-binding domain.,subcellular location:Localized to condensed chromosomes in mitosis in conjunction with BRCA2.,subunit:Component of a BHC histone deacetylase complex that contains HDAC1, HDAC2, HMG20B/BRAF35, AOF2/LSD1, RCOR1/CoREST and PHF21A/BHC80. The BHC complex may also contain ZMYM2, ZNF217, ZMYM3, GSE1 and GTF2I. Interacts with the BRCA2 tumor suppressor protein.,tissue specificity:Ubiquitously expressed in adult tissues.,

Subcellular Location : Nucleus. Chromosome. Localized to condensed chromosomes in mitosis in conjunction with BRCA2.

Expression : Ubiquitously expressed in adult tissues.

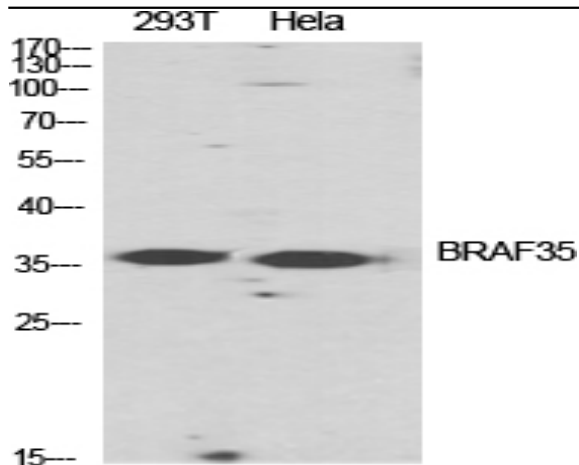
Sort : 2846

No4 : 1

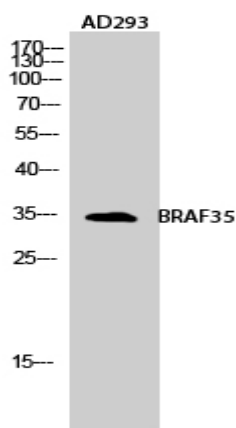
Host : Rabbit

Modifications : Unmodified

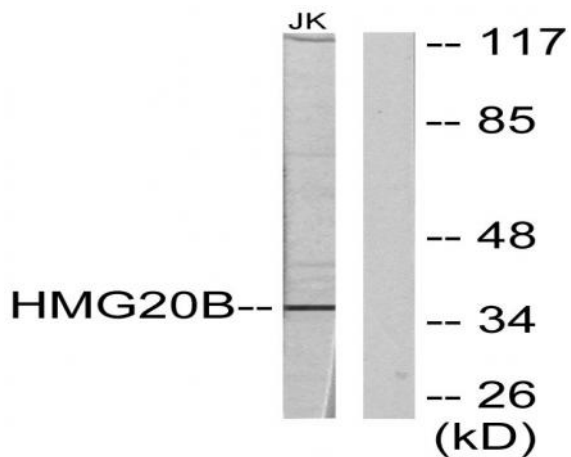
Products Images



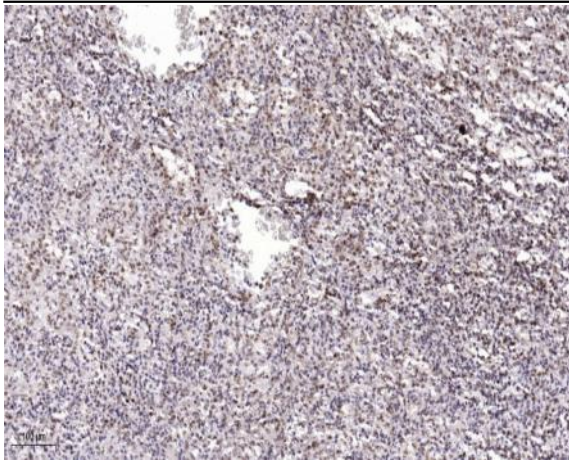
Western Blot analysis of various cells using BRAF35 Polyclonal Antibody diluted at 1:2000 cells nucleus extracted by Minute TM Cytoplasmic and Nuclear Fractionation kit (SC-003, Inventbiotech, MN, USA).



Western Blot analysis of AD293 cells using BRAF35 Polyclonal Antibody diluted at 1:2000 cells nucleus extracted by Minute TM Cytoplasmic and Nuclear Fractionation kit (SC-003, Inventbiotech, MN, USA).



Western blot analysis of lysates from Jurkat cells, using HMG20B Antibody. The lane on the right is blocked with the synthesized peptide.



Immunohistochemical analysis of paraffin-embedded human spleen. 1, Antibody was diluted at 1:200(4° overnight). 2, Tris-EDTA,pH9.0 was used for antigen retrieval. 3,Secondary antibody was diluted at 1:200(room temperature, 45min).