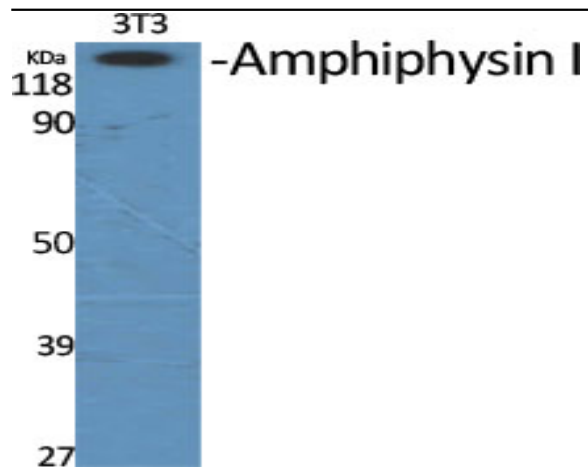


Amphiphysin I Polyclonal Antibody

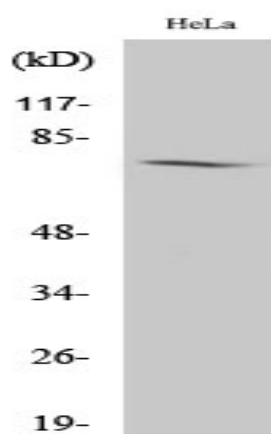
Catalog No :	YT0214
Reactivity :	Human;Mouse;Rat
Applications :	WB;ELISA
Target :	Amphiphysin I
Fields :	>>Endocytosis;>>Fc gamma R-mediated phagocytosis
Gene Name :	AMPH
Protein Name :	Amphiphysin
Human Gene Id :	273
Human Swiss Prot No :	P49418
Mouse Gene Id :	218038
Mouse Swiss Prot No :	Q7TQF7
Rat Gene Id :	60668
Rat Swiss Prot No :	O08838
Immunogen :	The antiserum was produced against synthesized peptide derived from human AMPH. AA range:131-180
Specificity :	Amphiphysin I Polyclonal Antibody detects endogenous levels of Amphiphysin I protein.
Formulation :	Liquid in PBS containing 50% glycerol, 0.5% BSA and 0.02% sodium azide.
Source :	Polyclonal, Rabbit,IgG
Dilution :	WB 1:500 - 1:2000. ELISA: 1:20000. Not yet tested in other applications.

Purification :	The antibody was affinity-purified from rabbit antiserum by affinity-chromatography using epitope-specific immunogen.
Concentration :	1 mg/ml
Storage Stability :	-15°C to -25°C/1 year(Do not lower than -25°C)
Observed Band :	76kD
Cell Pathway :	Fc gamma R-mediated phagocytosis;
Background :	This gene encodes a protein associated with the cytoplasmic surface of synaptic vesicles. A subset of patients with stiff-man syndrome who were also affected by breast cancer are positive for autoantibodies against this protein. Alternate splicing of this gene results in two transcript variants encoding different isoforms. Additional splice variants have been described, but their full length sequences have not been determined. A pseudogene of this gene is found on chromosome 11.[provided by RefSeq, Nov 2010],
Function :	disease:Antibodies against AMPH are detected in patients with stiff-man syndrome, a rare disease of the central nervous system characterized by progressive rigidity of the body musculature with superimposed painful spasms.,function:May participate in mechanisms of regulated exocytosis in synapses and certain endocrine cell types. May control the properties of the membrane associated cytoskeleton.,similarity:Contains 1 BAR domain.,similarity:Contains 1 SH3 domain.,subunit:Heterodimer with BIN1. Binds SH3GLB1 and AP2A2.,tissue specificity:Neurons, certain endocrine cell types and spermatocytes.,
Subcellular Location :	Cytoplasmic vesicle, secretory vesicle, synaptic vesicle membrane; Peripheral membrane protein; Cytoplasmic side. Cytoplasm, cytoskeleton.
Expression :	Neurons, certain endocrine cell types and spermatocytes.
Sort :	1954
No4 :	1
Host :	Rabbit
Modifications :	Unmodified

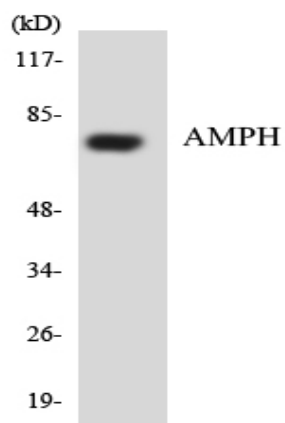
Products Images



Western Blot analysis of various cells using Amphiphysin I Polyclonal Antibody



Western Blot analysis of HeLa cells using Amphiphysin I Polyclonal Antibody



Western blot analysis of the lysates from HUVEC cells using AMPH antibody.