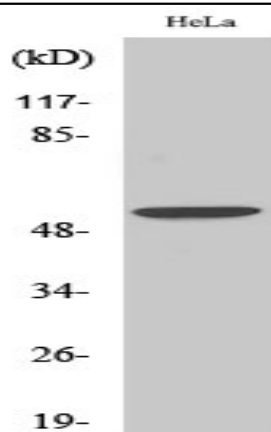


## BMP-3 Polyclonal Antibody

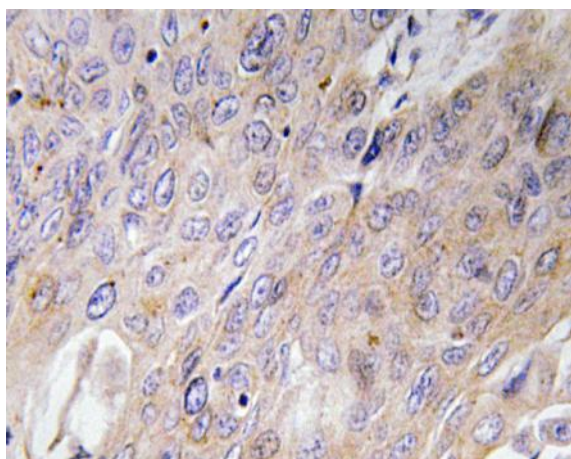
<b>Catalog No :</b>	YT0499
<b>Reactivity :</b>	Human;Mouse;Rat
<b>Applications :</b>	WB;IHC;IF;ELISA
<b>Target :</b>	BMP-3
<b>Fields :</b>	>>Cytokine-cytokine receptor interaction
<b>Gene Name :</b>	BMP3
<b>Protein Name :</b>	Bone morphogenetic protein 3
<b>Human Gene Id :</b>	651
<b>Human Swiss Prot No :</b>	P12645
<b>Mouse Gene Id :</b>	110075
<b>Mouse Swiss Prot No :</b>	Q8BHE5
<b>Rat Gene Id :</b>	25667
<b>Rat Swiss Prot No :</b>	P49002
<b>Immunogen :</b>	The antiserum was produced against synthesized peptide derived from human BMP-3. AA range:257-306
<b>Specificity :</b>	BMP-3 Polyclonal Antibody detects endogenous levels of BMP-3 protein.
<b>Formulation :</b>	Liquid in PBS containing 50% glycerol, 0.5% BSA and 0.02% sodium azide.
<b>Source :</b>	Polyclonal, Rabbit,IgG
<b>Dilution :</b>	WB 1:500 - 1:2000. IHC 1:100 - 1:300. ELISA: 1:40000.. IF 1:50-200

<b>Purification :</b>	The antibody was affinity-purified from rabbit antiserum by affinity-chromatography using epitope-specific immunogen.
<b>Concentration :</b>	1 mg/ml
<b>Storage Stability :</b>	-15°C to -25°C/1 year(Do not lower than -25°C)
<b>Observed Band :</b>	53kD
<b>Background :</b>	This gene encodes a secreted ligand of the TGF-beta (transforming growth factor-beta) superfamily of proteins. Ligands of this family bind various TGF-beta receptors leading to recruitment and activation of SMAD family transcription factors that regulate gene expression. The encoded preprotein is proteolytically processed to generate each subunit of the disulfide-linked homodimer. This protein suppresses osteoblast differentiation, and negatively regulates bone density, by modulating TGF-beta receptor availability to other ligands. [provided by RefSeq, Jul 2016],
<b>Function :</b>	function:Negatively regulates bone density. Antagonizes the ability of certain osteogenic BMPs to induce osteoprogenitor differentiation and ossification.,induction:Highly expressed in fracture tissue, particularly in osteoblasts, osteoclasts and chondroblasts.,online information:Bone morphogenetic protein 3 entry,similarity:Belongs to the TGF-beta family.,subunit:Homodimer; disulfide-linked.,tissue specificity:Expressed in adult and fetal cartilage.,
<b>Subcellular Location :</b>	Secreted.
<b>Expression :</b>	Expressed in adult and fetal cartilage.
<b>Tag :</b>	orthogonal,hot
<b>Sort :</b>	2794
<b>No4 :</b>	1
<b>Host :</b>	Rabbit
<b>Modifications :</b>	Unmodified

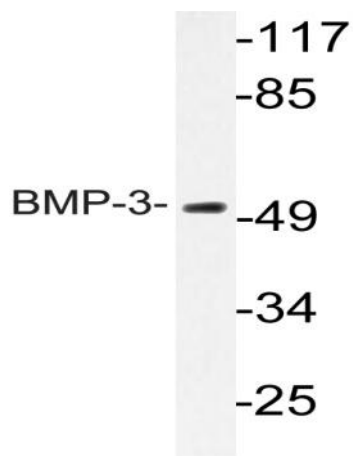
## Products Images



Western Blot analysis of various cells using BMP-3 Polyclonal Antibody diluted at 1:2000



Immunohistochemistry analysis of BMP-3 antibody in paraffin-embedded human lung carcinoma tissue.



Western blot analysis of lysate from HeLa cells, using BMP-3 antibody.