

BinCARD Polyclonal Antibody

Catalog No :	YT0491
Reactivity :	Human;Mouse
Applications :	IHC;IF;ELISA
Target :	BinCARD
Gene Name :	C9orf89
Protein Name :	Bcl10-interacting CARD protein
Human Gene Id :	84270
Human Swiss Prot No :	Q96LW7
Mouse Gene Id :	68480
Mouse Swiss Prot No :	Q9D1I2
Immunogen :	The antiserum was produced against synthesized peptide derived from human C9orf89. AA range:21-70
Specificity :	BinCARD Polyclonal Antibody detects endogenous levels of BinCARD protein.
Formulation :	Liquid in PBS containing 50% glycerol, 0.5% BSA and 0.02% sodium azide.
Source :	Polyclonal, Rabbit,IgG
Dilution :	IHC 1:100 - 1:300. ELISA: 1:40000.. IF 1:50-200
Purification :	The antibody was affinity-purified from rabbit antiserum by affinity-chromatography using epitope-specific immunogen.
Concentration :	1 mg/ml
Storage Stability :	-15°C to -25°C/1 year(Do not lower than -25°C)

Molecularweight : 26kD

Background : function:Plays a role in inhibiting the effects of BCL10-induced activation of NF-kappa-B. May inhibit the phosphorylation of BCL10 in a CARD-dependent manner.,PTM:Isoform 2 is phosphorylated upon DNA damage, probably by ATM or ATR.,similarity:Contains 1 CARD domain.,subcellular location:Co-expression with BCL10 induced translocation from nucleus to cytosol.,subunit:Associates with BCL10 by CARD-CARD interaction.,tissue specificity:Expressed in ovary, testis, placenta, skeletal muscle, kidney, lung, heart and liver (at protein level). Expressed in thymus and brain.,

Function : function:Plays a role in inhibiting the effects of BCL10-induced activation of NF-kappa-B. May inhibit the phosphorylation of BCL10 in a CARD-dependent manner.,PTM:Isoform 2 is phosphorylated upon DNA damage, probably by ATM or ATR.,similarity:Contains 1 CARD domain.,subcellular location:Co-expression with BCL10 induced translocation from nucleus to cytosol.,subunit:Associates with BCL10 by CARD-CARD interaction.,tissue specificity:Expressed in ovary, testis, placenta, skeletal muscle, kidney, lung, heart and liver (at protein level). Expressed in thymus and brain.,

Subcellular Location : [Isoform 1]: Nucleus . Coexpression with BCL10 induced translocation from nucleus to cytosol.; [Isoform 2]: Endoplasmic reticulum membrane ; Single-pass membrane protein . Mitochondrion membrane ; Single-pass membrane protein .

Expression : Expressed in ovary, testis, placenta, skeletal muscle, kidney, lung, heart and liver (at protein level). Expressed in thymus and brain.

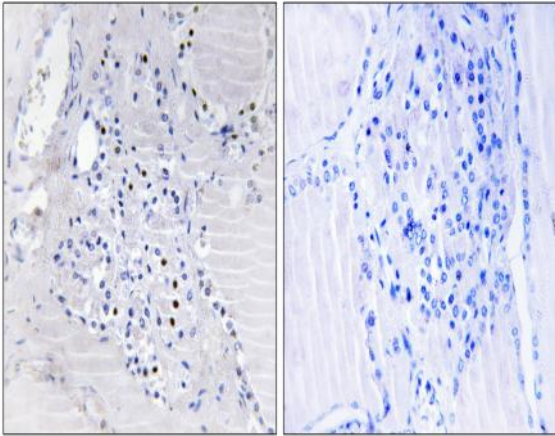
Sort : 2699

No4 : 1

Host : Rabbit

Modifications : Unmodified

Products Images



Immunohistochemistry analysis of paraffin-embedded human thyroid gland tissue, using C9orf89 Antibody. The picture on the right is blocked with the synthesized peptide.