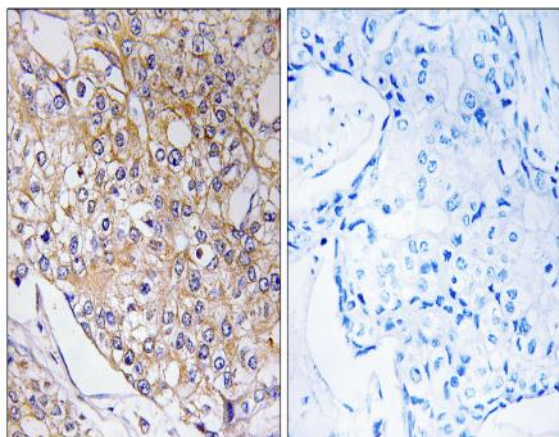


BET5 Polyclonal Antibody

Catalog No :	YT0487
Reactivity :	Human;Mouse;Rat
Applications :	IHC;IF;ELISA
Target :	BET5
Gene Name :	TRAPPC1
Protein Name :	Trafficking protein particle complex subunit 1
Human Gene Id :	58485
Human Swiss Prot No :	Q9Y5R8
Mouse Gene Id :	245828
Mouse Swiss Prot No :	Q5NCF2
Rat Gene Id :	287427
Rat Swiss Prot No :	Q2KMM2
Immunogen :	The antiserum was produced against synthesized peptide derived from human TRAPPC1. AA range:10-59
Specificity :	BET5 Polyclonal Antibody detects endogenous levels of BET5 protein.
Formulation :	Liquid in PBS containing 50% glycerol, 0.5% BSA and 0.02% sodium azide.
Source :	Polyclonal, Rabbit,IgG
Dilution :	IHC 1:100 - 1:300. ELISA: 1:5000.. IF 1:50-200
Purification :	The antibody was affinity-purified from rabbit antiserum by affinity-chromatography using epitope-specific immunogen.

Concentration :	1 mg/ml
Storage Stability :	-15°C to -25°C/1 year(Do not lower than -25°C)
Molecularweight :	17kD
Background :	trafficking protein particle complex 1 (TRAPPC1) Homo sapiens This gene product plays a role in vesicular transport of proteins to the Golgi apparatus from the endoplasmic reticulum. The encoded protein is a component of the multisubunit transport protein particle (TRAPP) complex. Alternative splicing results in multiple transcript variants.[provided by RefSeq, Oct 2009],
Function :	function:May play a role in vesicular transport from endoplasmic reticulum to Golgi.,similarity:Belongs to the TRAPP small subunits family. BET5 subfamily.,subunit:Part of the multisubunit TRAPP (transport protein particle) complex.,
Subcellular Location :	Golgi apparatus, cis-Golgi network . Endoplasmic reticulum .
Expression :	Uterus,
Sort :	2670
No4 :	1
Host :	Rabbit
Modifications :	Unmodified

Products Images



Immunohistochemistry analysis of paraffin-embedded human breast carcinoma tissue, using TRAPPC1 Antibody. The picture on the right is blocked with the synthesized peptide.