

**BCSC-1 Polyclonal Antibody**

<b>Catalog No :</b>	YT0483
<b>Reactivity :</b>	Human;Rat;Mouse;
<b>Applications :</b>	WB;ELISA
<b>Target :</b>	BCSC-1
<b>Gene Name :</b>	VWA5A
<b>Protein Name :</b>	von Willebrand factor A domain-containing protein 5A
<b>Human Gene Id :</b>	4013
<b>Human Swiss Prot No :</b>	O00534
<b>Mouse Swiss Prot No :</b>	Q99KC8
<b>Immunogen :</b>	The antiserum was produced against synthesized peptide derived from human LHR2A. AA range:371-420
<b>Specificity :</b>	BCSC-1 Polyclonal Antibody detects endogenous levels of BCSC-1 protein.
<b>Formulation :</b>	Liquid in PBS containing 50% glycerol, 0.5% BSA and 0.02% sodium azide.
<b>Source :</b>	Polyclonal, Rabbit,IgG
<b>Dilution :</b>	WB 1:500 - 1:2000. ELISA: 1:20000. Not yet tested in other applications.
<b>Purification :</b>	The antibody was affinity-purified from rabbit antiserum by affinity-chromatography using epitope-specific immunogen.
<b>Concentration :</b>	1 mg/ml
<b>Storage Stability :</b>	-15°C to -25°C/1 year(Do not lower than -25°C)
<b>Observed Band :</b>	86kD

**Background :** VWA5A (von Willebrand factor A domain containing 5A), also known as BCSC-1 (breast cancer suppressor candidate 1) or LOH11CR2A (loss of heterozygosity 11 chromosomal region 2 gene A protein), is a 786 amino acid protein containing one VIT domain and one VWFA domain. VWA5A is expressed at low levels in various tissues, with no expression found in 80% of tumor cell lines. Likely acting as a tumor suppressor gene, deletion of VWA5A leads to loss of heterozygosity (LOH) in breast and ovarian tumors, and may have an important role as a potential gene therapy target. Abnormal expression of VWA5A may lead to an increase in adhesion of CNE-2L2 cells associated with an increase in expression of E-cadherin, alpha-catenin, and p53, resulting in a decrease of malignant activity in cells with ectopic expression of VWA5A. Existing as four alternatively spliced isoforms, the gene encoding VWA5A maps to human chromosome 11q24.2.

**Subcellular Location :** nucleus,nucleoplasm,

**Expression :** Expressed at low level in many tissues. Not expressed in 80% of tumor cell lines tested.

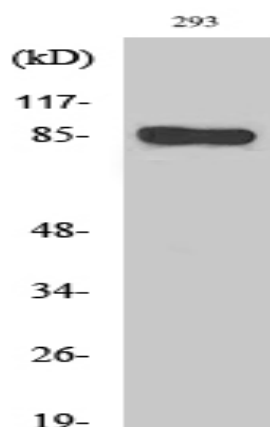
**Sort :** 2645

**No4 :** 1

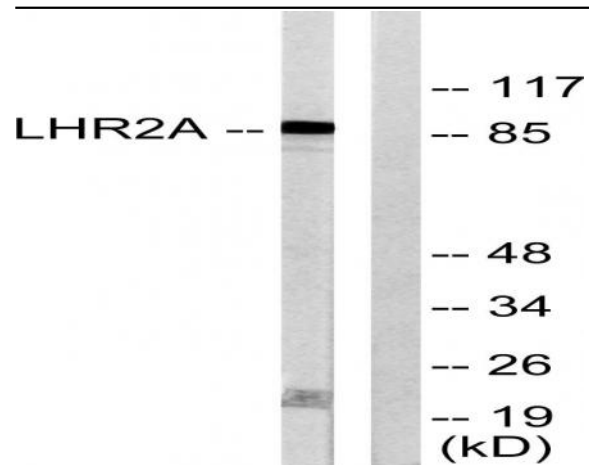
**Host :** Rabbit

**Modifications :** Unmodified

## Products Images



Western Blot analysis of various cells using BCSC-1 Polyclonal Antibody



Western blot analysis of lysates from 293 cells, using LHR2A Antibody. The lane on the right is blocked with the synthesized peptide.