

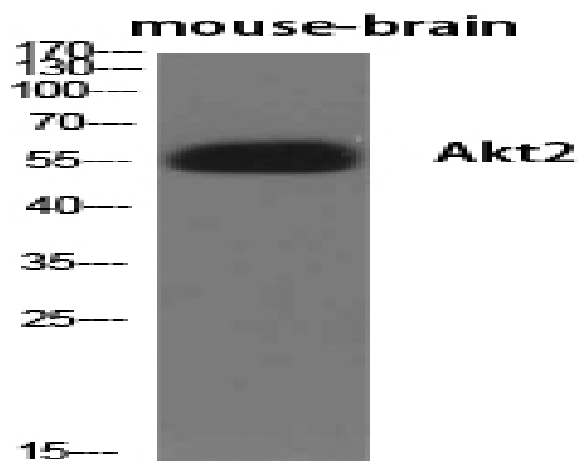
Akt2 Polyclonal Antibody

Catalog No :	YT0187
Reactivity :	Human;Mouse;Rat
Applications :	WB;IHC;IF;ELISA
Target :	Akt2
Fields :	>>EGFR tyrosine kinase inhibitor resistance;>>Endocrine resistance;>>Platinum drug resistance;>>MAPK signaling pathway;>>ErbB signaling pathway;>>Ras signaling pathway;>>Rap1 signaling pathway;>>cGMP-PKG signaling pathway;>>cAMP signaling pathway;>>Chemokine signaling pathway;>>HIF-1 signaling pathway;>>FoxO signaling pathway;>>Sphingolipid signaling pathway;>>Phospholipase D signaling pathway;>>Autophagy - animal;>>mTOR signaling pathway;>>PI3K-Akt signaling pathway;>>AMPK signaling pathway;>>Apoptosis;>>Longevity regulating pathway;>>Longevity regulating pathway - multiple species;>>Cellular senescence;>>Adrenergic signaling in cardiomyocytes;>>VEGF signaling pathway;>>Apelin signaling pathway;>>Osteoclast differentiation;>>Focal adhesion;>>Signaling pathways regulating pluripotency of stem cells;>>Platelet activation;>>Neutrophil extracellular trap formation;>>Toll-like receptor signaling pathway;>>C-type lectin receptor signaling pathway;>>JAK-STAT signaling pathway;>>T cell recept
Gene Name :	AKT2
Protein Name :	RAC-beta serine/threonine-protein kinase
Human Gene Id :	208
Human Swiss Prot No :	P31751
Mouse Gene Id :	11652
Mouse Swiss Prot No :	Q60823
Rat Gene Id :	25233
Rat Swiss Prot No :	P47197

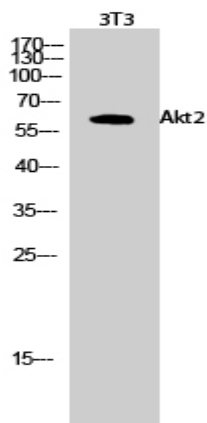
Immunogen :	The antiserum was produced against synthesized peptide derived from human Akt2. AA range:432-481
Specificity :	Akt2 Polyclonal Antibody detects endogenous levels of Akt2 protein.
Formulation :	Liquid in PBS containing 50% glycerol, 0.5% BSA and 0.02% sodium azide.
Source :	Polyclonal, Rabbit,IgG
Dilution :	WB 1:500 - 1:2000. IHC 1:100 - 1:300. IF 1:200 - 1:1000. ELISA: 1:10000. Not yet tested in other applications.
Purification :	The antibody was affinity-purified from rabbit antiserum by affinity-chromatography using epitope-specific immunogen.
Concentration :	1 mg/ml
Storage Stability :	-15°C to -25°C/1 year(Do not lower than -25°C)
Observed Band :	56kD
Cell Pathway :	Regulation_Microtubule; Stem cell pathway; T_Cell_Receptor; Regulates Angiogenesis; Insulin Receptor; Toll_Like; ErbB/HER; AMPK; MAPK_ERK_Growth;MAPK_G_Protein; B_Cell_Antigen; Adherens_Junction; PI3K
Background :	This gene is a putative oncogene encoding a protein belonging to a subfamily of serine/threonine kinases containing SH2-like (Src homology 2-like) domains. The gene was shown to be amplified and overexpressed in 2 of 8 ovarian carcinoma cell lines and 2 of 15 primary ovarian tumors. Overexpression contributes to the malignant phenotype of a subset of human ductal pancreatic cancers. The encoded protein is a general protein kinase capable of phosphorylating several known proteins. [provided by RefSeq, Jul 2008],
Function :	catalytic activity:ATP + a protein = ADP + a phosphoprotein.,disease:Alterations of AKT2 may contribute to the pathogenesis of ovarian carcinomas.,enzyme regulation:Two specific sites, one in the kinase domain (Thr-309) and the other in the C-terminal regulatory region (Ser-474), need to be phosphorylated for its full activation.,function:General protein kinase capable of phosphorylating several known proteins.,similarity:Belongs to the protein kinase superfamily.,similarity:Belongs to the protein kinase superfamily. AGC Ser/Thr protein kinase family. RAC subfamily.,similarity:Contains 1 AGC-kinase C-terminal domain.,similarity:Contains 1 PH domain.,similarity:Contains 1 protein kinase domain.,subunit:Interacts (via PH domain) with MTCP1, TCL1A AND TCL1B.,tissue specificity:In all human cell types so far analyzed.,

Subcellular Location :	Cytoplasm. Nucleus. Cell membrane; Peripheral membrane protein. Early endosome . Localizes within both nucleus and cytoplasm of proliferative primary myoblasts and mostly within the nucleus of differentiated primary myoblasts. By virtue of the N-terminal PH domain, is recruited to sites of the plasma membrane containing increased PI(3,4,5)P3 or PI(3,4)P2, cell membrane targeting is also facilitated by interaction with CLIP3. Colocalizes with WDFY2 in early endosomes (By similarity). .
Expression :	Expressed in all cell types so far analyzed.
Tag :	orthogonal
Sort :	1869
No4 :	1
Host :	Rabbit
Modifications :	Unmodified

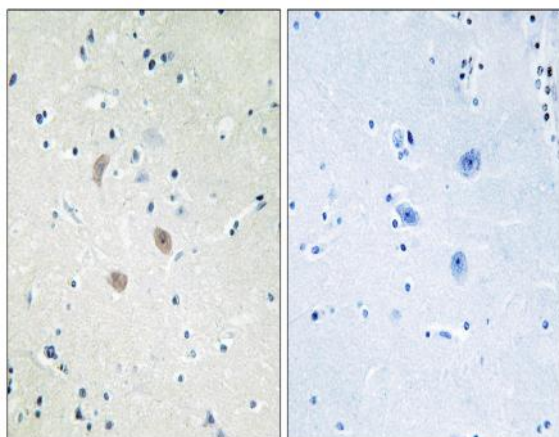
Products Images



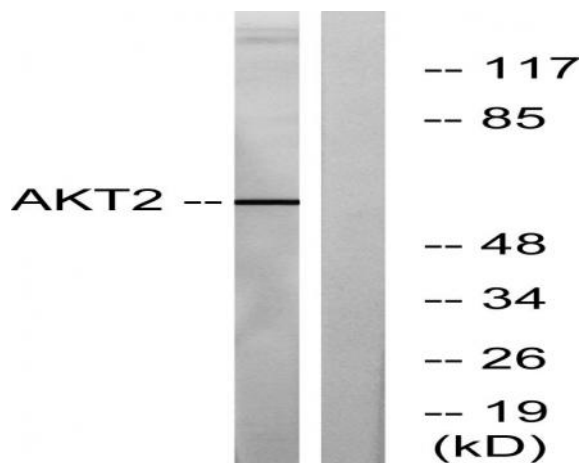
Western Blot analysis of various cells using Akt2 Polyclonal Antibody diluted at 1:500



Western Blot analysis of 3T3 cells using Akt2 Polyclonal Antibody diluted at 1:500



Immunohistochemistry analysis of paraffin-embedded human brain tissue, using Akt2 Antibody. The picture on the right is blocked with the synthesized peptide.



Western blot analysis of lysates from A2780 cells, treated with TNF- α , using Akt2 Antibody. The lane on the right is blocked with the synthesized peptide.