

BCL2L12 Polyclonal Antibody

| | |
|------------------------------|-----------------------------------------------------------------------------------------------------------------------------------------------------------------------------------------------------------------------------------------|
| Catalog No : | YT0472 |
| Reactivity : | Human;Mouse |
| Applications : | WB;ELISA |
| Target : | BCL2L12 |
| Gene Name : | BCL2L12 |
| Protein Name : | Bcl-2-like protein 12 |
| Human Gene Id : | 83596 |
| Human Swiss Prot No : | Q9HB09 |
| Immunogen : | Synthesized peptide derived from BCL2L12 . at AA range: 60-140 |
| Specificity : | BCL2L12 Polyclonal Antibody detects endogenous levels of BCL2L12 protein. |
| Formulation : | Liquid in PBS containing 50% glycerol, 0.5% BSA and 0.02% sodium azide. |
| Source : | Polyclonal, Rabbit,IgG |
| Dilution : | WB 1:500 - 1:2000. ELISA: 1:5000. Not yet tested in other applications. |
| Purification : | The antibody was affinity-purified from rabbit antiserum by affinity-chromatography using epitope-specific immunogen. |
| Concentration : | 1 mg/ml |
| Storage Stability : | -15°C to -25°C/1 year(Do not lower than -25°C) |
| Observed Band : | 34kD |
| Background : | This gene encodes a member of a family of proteins containing a Bcl-2 homology domain 2 (BH2). The encoded protein is an anti-apoptotic factor that acts as an inhibitor of caspases 3 and 7 in the cytoplasm. In the nucleus, it binds |

to the p53 tumor suppressor protein, preventing its association with target genes. Overexpression of this gene has been detected in a number of different cancers. There is a pseudogene for this gene on chromosome 3. Alternative splicing results in multiple transcript variants. [provided by RefSeq, Sep 2013],

Function :

similarity:Belongs to the Bcl-2 family.,tissue specificity:Expressed mainly in breast, thymus, prostate, fetal liver, colon, placenta, pancreas, small intestine, spinal cord, kidney, and bone marrow and to a lesser extent in many other tissues. Isoform 2 is primarily expressed in skeletal muscle.,

Subcellular Location :

nucleus,membrane,

Expression :

Expressed mainly in breast, thymus, prostate, fetal liver, colon, placenta, pancreas, small intestine, spinal cord, kidney, and bone marrow and to a lesser extent in many other tissues. Isoform 2 is primarily expressed in skeletal muscle.

Sort :

2620

No4 :

1

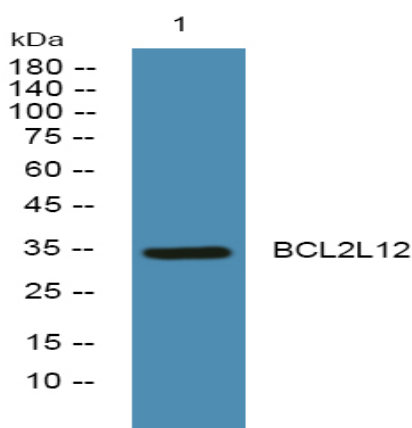
Host :

Rabbit

Modifications :

Unmodified

Products Images



Western blot analysis of lysates from Jurkat cells, primary antibody was diluted at 1:1000, 4° over night