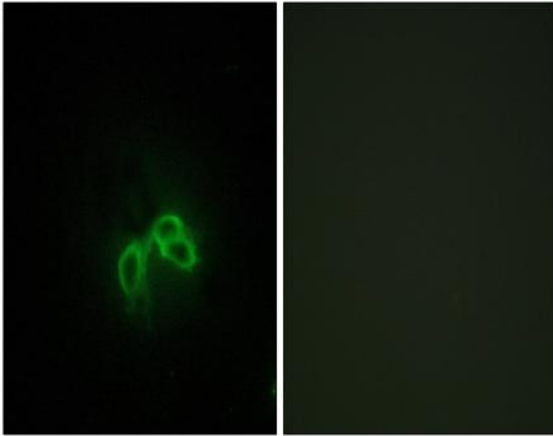


Bc10 Polyclonal Antibody

Catalog No :	YT0461
Reactivity :	Human;Mouse;Rat
Applications :	IF;ELISA
Target :	Bc10
Gene Name :	BLCAP
Protein Name :	Bladder cancer-associated protein
Human Gene Id :	10904
Human Swiss Prot No :	P62952
Mouse Gene Id :	53619
Mouse Swiss Prot No :	P62951
Rat Gene Id :	171113
Rat Swiss Prot No :	P62950
Immunogen :	The antiserum was produced against synthesized peptide derived from human BLCAP. AA range:38-87
Specificity :	Bc10 Polyclonal Antibody detects endogenous levels of Bc10 protein.
Formulation :	Liquid in PBS containing 50% glycerol, 0.5% BSA and 0.02% sodium azide.
Source :	Polyclonal, Rabbit,IgG
Dilution :	IF 1:200 - 1:1000. ELISA: 1:40000. Not yet tested in other applications.
Purification :	The antibody was affinity-purified from rabbit antiserum by affinity-chromatography using epitope-specific immunogen.

Concentration :	1 mg/ml
Storage Stability :	-15°C to -25°C/1 year(Do not lower than -25°C)
Molecularweight :	10kD
Background :	<p>This gene encodes a protein that reduces cell growth by stimulating apoptosis. Alternative splicing and the use of alternative promoters result in multiple transcript variants encoding the same protein. This gene is imprinted in brain where different transcript variants are expressed from each parental allele. Transcript variants initiating from the upstream promoter are expressed preferentially from the maternal allele, while transcript variants initiating downstream of the interspersed NNAT gene (GeneID:4826) are expressed from the paternal allele. Transcripts at this locus may also undergo A to I editing, resulting in amino acid changes at three positions in the N-terminus of the protein. [provided by RefSeq, Nov 2015],</p>
Function :	<p>similarity:Belongs to the BLCAP family.,tissue specificity:Expressed in cervical tissues. Down-regulated during bladder cancer progression and in most cervical carcinomas.,</p>
Subcellular Location :	Membrane ; Multi-pass membrane protein .
Expression :	Ubiquitous. Expressed in cervical tissues. Down-regulated in bladder invasive carcinoma, renal cell carcinoma and in primary cervical carcinoma.
Sort :	2601
No4 :	1
Host :	Rabbit
Modifications :	Unmodified

Products Images



Immunofluorescence analysis of NIH/3T3 cells, using BLCAP Antibody. The picture on the right is blocked with the synthesized peptide.