

## BAP31 Polyclonal Antibody

<b>Catalog No :</b>	YT0451
<b>Reactivity :</b>	Human;Mouse;Rat
<b>Applications :</b>	WB;ELISA
<b>Target :</b>	BAP31
<b>Fields :</b>	>>Protein processing in endoplasmic reticulum;>>Human papillomavirus infection
<b>Gene Name :</b>	BCAP31
<b>Protein Name :</b>	B-cell receptor-associated protein 31
<b>Human Gene Id :</b>	10134
<b>Human Swiss Prot No :</b>	P51572
<b>Mouse Gene Id :</b>	27061
<b>Mouse Swiss Prot No :</b>	Q61335
<b>Immunogen :</b>	The antiserum was produced against synthesized peptide derived from human BAP31. AA range:151-200
<b>Specificity :</b>	BAP31 Polyclonal Antibody detects endogenous levels of BAP31 protein.
<b>Formulation :</b>	Liquid in PBS containing 50% glycerol, 0.5% BSA and 0.02% sodium azide.
<b>Source :</b>	Polyclonal, Rabbit,IgG
<b>Dilution :</b>	WB 1:500 - 1:2000. ELISA: 1:40000. Not yet tested in other applications.
<b>Purification :</b>	The antibody was affinity-purified from rabbit antiserum by affinity-chromatography using epitope-specific immunogen.
<b>Concentration :</b>	1 mg/ml

**Storage Stability :** -15°C to -25°C/1 year(Do not lower than -25°C)

**Observed Band :** 28kD

**Background :** This gene encodes a member of the B-cell receptor associated protein 31 superfamily. The encoded protein is a multi-pass transmembrane protein of the endoplasmic reticulum that is involved in the anterograde transport of membrane proteins from the endoplasmic reticulum to the Golgi and in caspase 8-mediated apoptosis. Microdeletions in this gene are associated with contiguous ABCD1/DXS1375E deletion syndrome (CADD5), a neonatal disorder. Alternative splicing of this gene results in multiple transcript variants. Two related pseudogenes have been identified on chromosome 16. [provided by RefSeq, Jan 2012],

**Function :** disease:Microdeletions in BCAP31 are involved in the contiguous ABCD1/DXS1375E deletion syndrome (CADD5) [MIM:300475]. Patients manifest profound neonatal hypotonia, subsequent failure to thrive, and cholestatic liver disease.,function:May play a role in anterograde transport of membrane proteins from the endoplasmic reticulum to the Golgi. May be involved in CASP8-mediated apoptosis.,PTM:Cleaved by CASP8 and other caspases.,similarity:Belongs to the BCAP29/BCAP31 family.,subcellular location:May shuttle between the ER and the intermediate compartment/cis-Golgi complex.,subunit:Homodimer and heterodimer with BCAP29. Binds CASP8 (isoform 9) as a complex containing BCAP31, BCAP29, BCL2 and/or BCL2L1. Interacts with VAMP3, VAMP1 and membrane IgD immunoglobulins. May interact with ACTG1 and non-muscle myosin II. Interacts with PTPLB.,tissue specificity:Ubiquitous.,

**Subcellular Location :** Endoplasmic reticulum membrane ; Multi-pass membrane protein . Endoplasmic reticulum-Golgi intermediate compartment membrane ; Multi-pass membrane protein . May shuttle between the ER and the intermediate compartment/cis-Golgi complex (PubMed:9396746). Associates with the mitochondria-associated endoplasmic reticulum membrane via interaction with TOMM40 (PubMed:31206022). .

**Expression :** Ubiquitous. Highly expressed in neurons and discrete endocrine cells.

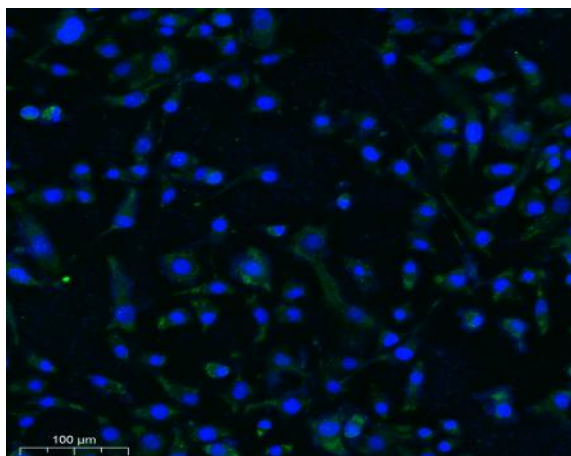
**Sort :** 2586

**No4 :** 1

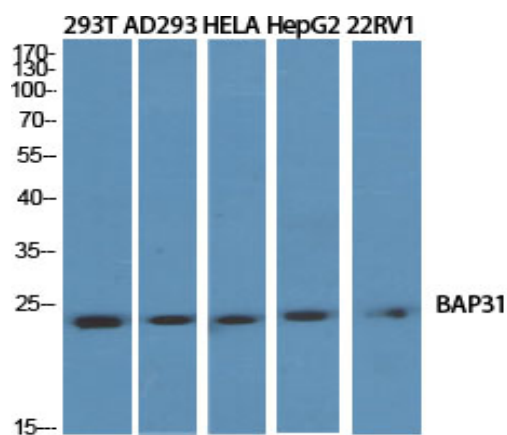
**Host :** Rabbit

**Modifications :** Unmodified

## Products Images



Immunofluorescence analysis of Caco2 cell. 1, primary Antibody was diluted at 1:100(4°C overnight). 2, Goat Anti Rabbit IgG (H&L) - AFfluor 594 Secondary antibody(catalog No: RS3611) was diluted at 1:500(room temperature, 50min).



Western Blot analysis of various cells using BAP31 Polyclonal Antibody diluted at 1:2000