

## BAM32 Polyclonal Antibody

<b>Catalog No :</b>	YT0450
<b>Reactivity :</b>	Human;Mouse
<b>Applications :</b>	WB;IHC;IF;ELISA
<b>Target :</b>	DAPP1
<b>Fields :</b>	>>B cell receptor signaling pathway
<b>Gene Name :</b>	DAPP1
<b>Protein Name :</b>	Dual adapter for phosphotyrosine and 3-phosphotyrosine and 3-phosphoinositide
<b>Human Gene Id :</b>	27071
<b>Human Swiss Prot No :</b>	Q9UN19
<b>Mouse Gene Id :</b>	26377
<b>Mouse Swiss Prot No :</b>	Q9QXT1
<b>Immunogen :</b>	The antiserum was produced against synthesized peptide derived from human DAPP1. AA range:105-154
<b>Specificity :</b>	BAM32 Polyclonal Antibody detects endogenous levels of BAM32 protein.
<b>Formulation :</b>	Liquid in PBS containing 50% glycerol, 0.5% BSA and 0.02% sodium azide.
<b>Source :</b>	Polyclonal, Rabbit,IgG
<b>Dilution :</b>	WB 1:500 - 1:2000. IHC 1:100 - 1:300. ELISA: 1:10000.. IF 1:50-200
<b>Purification :</b>	The antibody was affinity-purified from rabbit antiserum by affinity-chromatography using epitope-specific immunogen.
<b>Concentration :</b>	1 mg/ml

**Storage Stability :** -15 °C to -25 °C/1 year(Do not lower than -25 °C)

**Observed Band :** 32kD

**Cell Pathway :** B\_Cell\_Antigen;

**Background :** function:May act as a B-cell-associated adapter that regulates B-cell antigen receptor (BCR)-signaling downstream of PI3K.,induction:Upon B-cell activation.,PTM:Phosphorylated on tyrosine residues.,similarity:Contains 1 PH domain.,similarity:Contains 1 SH2 domain.,subcellular location:Membrane-associated after cell stimulation leading to its translocation.,subunit:Interacts with PtdIns(3,4,5)P3 and PLCG2. In vitro, interacts with PtdIns(3,4)P2.,tissue specificity:Highly expressed in placenta and lung, followed by brain, heart, kidney, liver, pancreas and skeletal muscle. Expressed by B-lymphocytes, but not T-lymphocytes or nonhematopoietic cells.,

**Function :** function:May act as a B-cell-associated adapter that regulates B-cell antigen receptor (BCR)-signaling downstream of PI3K.,induction:Upon B-cell activation.,PTM:Phosphorylated on tyrosine residues.,similarity:Contains 1 PH domain.,similarity:Contains 1 SH2 domain.,subcellular location:Membrane-associated after cell stimulation leading to its translocation.,subunit:Interacts with PtdIns(3,4,5)P3 and PLCG2. In vitro, interacts with PtdIns(3,4)P2.,tissue specificity:Highly expressed in placenta and lung, followed by brain, heart, kidney, liver, pancreas and skeletal muscle. Expressed by B-lymphocytes, but not T-lymphocytes or nonhematopoietic cells.,

**Subcellular Location :** Cytoplasm . Membrane ; Peripheral membrane protein . Membrane-associated after cell stimulation leading to its translocation.

**Expression :** Highly expressed in placenta and lung, followed by brain, heart, kidney, liver, pancreas and skeletal muscle. Expressed by B-lymphocytes, but not T-lymphocytes or nonhematopoietic cells.

**Tag :** orthogonal

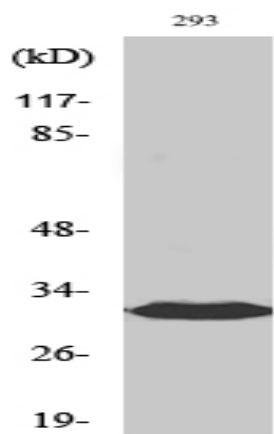
**Sort :** 702

**No4 :** 1

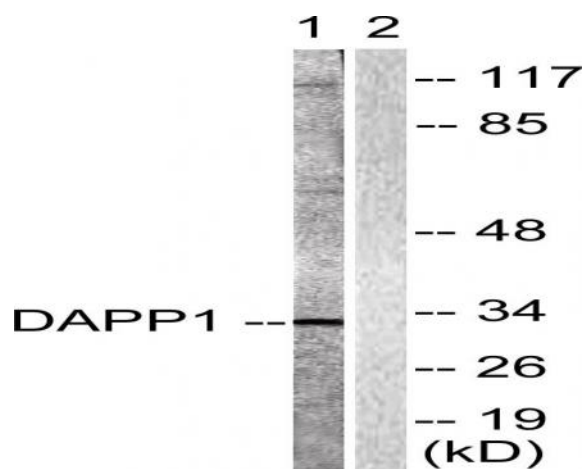
**Host :** Rabbit

**Modifications :** Unmodified

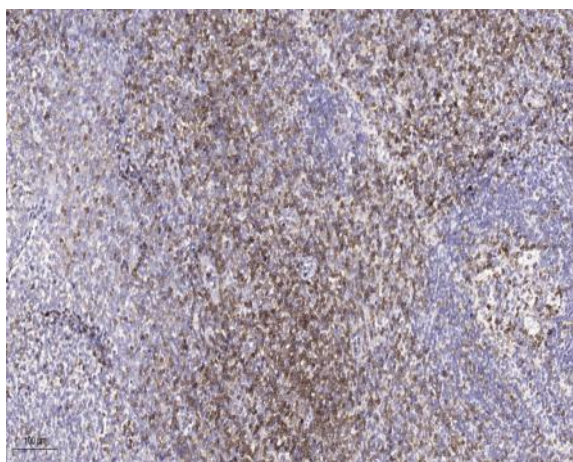
**Products Images**



Western Blot analysis of various cells using BAM32 Polyclonal Antibody



Western blot analysis of lysates from 293 cells, treated with Insulin 0.01U/ml 2', using DAPP1 Antibody. The lane on the right is blocked with the synthesized peptide.



Immunohistochemical analysis of paraffin-embedded human tonsil. 1, Tris-EDTA,pH9.0 was used for antigen retrieval. 2 Antibody was diluted at 1:200(4° overnight).3,Secondary antibody was diluted at 1:200(room temperature, 45min).