

AGXT2L2 Polyclonal Antibody

Catalog No :	YT0144
Reactivity :	Human;Mouse;Rat
Applications :	WB;IHC;IF;ELISA
Target :	AGXT2L2
Fields :	>>Lysine degradation;>>Metabolic pathways
Gene Name :	AGXT2L2
Protein Name :	5-phosphohydroxy-L-lysine phospho-lyase
Human Gene Id :	85007
Human Swiss Prot No :	Q8IUZ5
Mouse Gene Id :	72947
Mouse Swiss Prot No :	Q8R1K4
Immunogen :	The antiserum was produced against synthesized peptide derived from human AGXT2L2. AA range:341-390
Specificity :	AGXT2L2 Polyclonal Antibody detects endogenous levels of AGXT2L2 protein.
Formulation :	Liquid in PBS containing 50% glycerol, 0.5% BSA and 0.02% sodium azide.
Source :	Polyclonal, Rabbit,IgG
Dilution :	WB 1:500 - 1:2000. IHC 1:100 - 1:300. ELISA: 1:10000.. IF 1:50-200
Purification :	The antibody was affinity-purified from rabbit antiserum by affinity-chromatography using epitope-specific immunogen.
Concentration :	1 mg/ml

Storage Stability : -15°C to -25°C/1 year(Do not lower than -25°C)

Observed Band : 50kD

Background : 5-phosphohydroxy-L-lysine phospho-lyase(PHYKPL) Homo sapiens This is a nuclear gene encoding a mitochondrial enzyme that catalyzes the conversion of 5-phosphonoxy-L-lysine to ammonia, inorganic phosphate, and 2-aminoadipate semialdehyde. Mutations in this gene may cause phosphohydroxylysinuria. Alternative splicing results in multiple transcript variants. [provided by RefSeq, May 2013],

Function : cofactor:Pyridoxal phosphate .,similarity:Belongs to the class-III pyridoxal-phosphate-dependent aminotransferase family.,subunit:Homotetramer.,

Subcellular Location : Mitochondrion .

Expression : Brain,Muscle,Pancreas,Stomach,

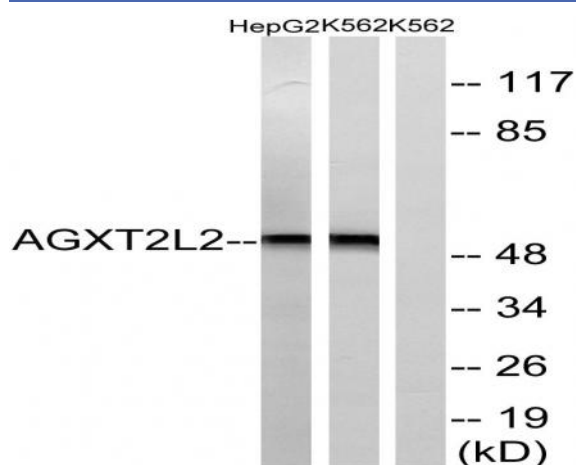
Sort : 1796

No4 : 1

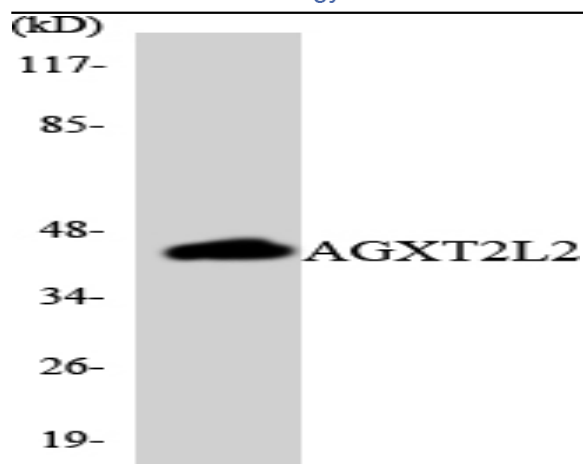
Host : Rabbit

Modifications : Unmodified

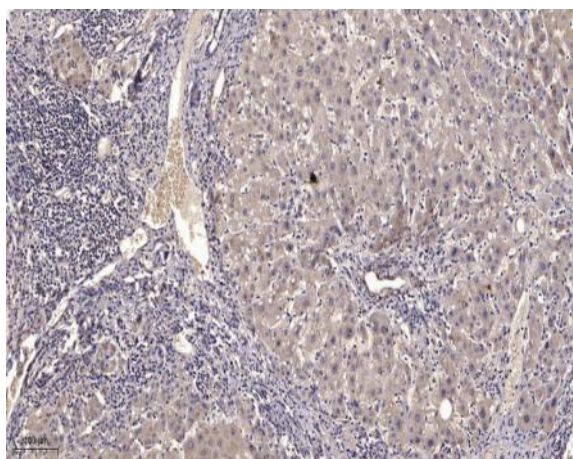
Products Images



Western blot analysis of lysates from K562 and HepG2 cells, using AGXT2L2 Antibody. The lane on the right is blocked with the synthesized peptide.



Western blot analysis of the lysates from HUVEC cells using AGXT2L2 antibody.



Immunohistochemical analysis of paraffin-embedded human liver cancer. 1, Antibody was diluted at 1:200 (4° overnight). 2, Tris-EDTA, pH 9.0 was used for antigen retrieval. 3, Secondary antibody was diluted at 1:200 (room temperature, 45min).