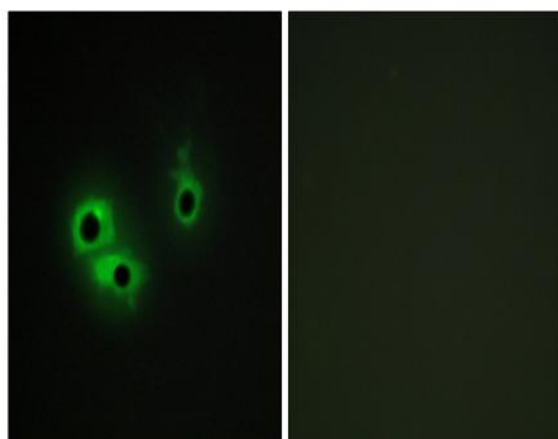


AGR3 Polyclonal Antibody

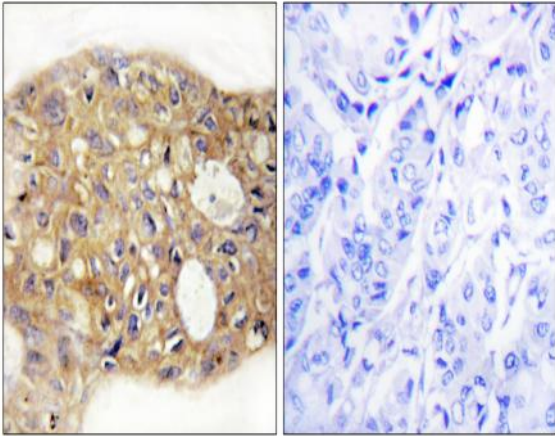
Catalog No :	YT0142
Reactivity :	Human;Mouse
Applications :	IHC;IF;ELISA
Target :	AGR3
Gene Name :	AGR3
Protein Name :	Anterior gradient protein 3 homolog
Human Gene Id :	155465
Human Swiss Prot No :	Q8TD06
Mouse Gene Id :	403205
Mouse Swiss Prot No :	Q8R3W7
Immunogen :	The antiserum was produced against synthesized peptide derived from human AGR3. AA range:1-50
Specificity :	AGR3 Polyclonal Antibody detects endogenous levels of AGR3 protein.
Formulation :	Liquid in PBS containing 50% glycerol, 0.5% BSA and 0.02% sodium azide.
Source :	Polyclonal, Rabbit,IgG
Dilution :	IHC 1:100 - 1:300. IF 1:200 - 1:1000. ELISA: 1:5000. Not yet tested in other applications.
Purification :	The antibody was affinity-purified from rabbit antiserum by affinity-chromatography using epitope-specific immunogen.
Concentration :	1 mg/ml
Storage Stability :	-15°C to -25°C/1 year(Do not lower than -25°C)

Molecularweight :	19kD
Background :	similarity:Belongs to the AGR family.,subunit:Interacts with LYPD3 and alpha-dystroglycan.,
Function :	similarity:Belongs to the AGR family.,subunit:Interacts with LYPD3 and alpha-dystroglycan.,
Subcellular Location :	Endoplasmic reticulum . Found in the cytoplasm, which could include the endoplasmic reticulum. .
Expression :	Expressed in the lung, in the ciliated cells of the airway epithelium (PubMed:25751668). Expression increased with differentiation of airway epithelial cells (PubMed:25751668). Not detected in the mucous cells (PubMed:25751668). Expressed in ciliated cells in the oviduct (PubMed:26170690). Also detected in stomach, colon, prostate and liver (PubMed:25751668). Expressed in breast, ovary, prostate and liver cancer (PubMed:26170690). Expression is associated with the level of differentiation of breast cancer (at protein level) (PubMed:26170690).
Sort :	1789
No4 :	1
Host :	Rabbit
Modifications :	Unmodified

Products Images



Immunofluorescence analysis of COS7 cells, using AGR3 Antibody. The picture on the right is blocked with the synthesized peptide.



Immunohistochemistry analysis of paraffin-embedded human breast carcinoma tissue, using AGR3 Antibody. The picture on the right is blocked with the synthesized peptide.