

AW-1 Polyclonal Antibody

Catalog No :	YT0425
Reactivity :	Human;Rat;Mouse;
Applications :	WB;IHC;IF;ELISA
Target :	AW-1
Gene Name :	ZNF174
Protein Name :	Zinc finger protein 174
Human Gene Id :	7727
Human Swiss Prot No :	Q15697
Immunogen :	The antiserum was produced against synthesized peptide derived from human ZNF174. AA range:201-250
Specificity :	AW-1 Polyclonal Antibody detects endogenous levels of AW-1 protein.
Formulation :	Liquid in PBS containing 50% glycerol, 0.5% BSA and 0.02% sodium azide.
Source :	Polyclonal, Rabbit,IgG
Dilution :	WB 1:500 - 1:2000. IHC 1:100 - 1:300. IF 1:200 - 1:1000. ELISA: 1:10000. Not yet tested in other applications.
Purification :	The antibody was affinity-purified from rabbit antiserum by affinity-chromatography using epitope-specific immunogen.
Concentration :	1 mg/ml
Storage Stability :	-15°C to -25°C/1 year(Do not lower than -25°C)
Observed Band :	46kD
Background :	function:Transcriptional repressor.,similarity:Belongs to the krueppel C2H2-type

zinc-finger protein family.,similarity:Contains 1 SCAN box domain.,similarity:Contains 3 C2H2-type zinc fingers.,subunit:Homodimer.,tissue specificity:Expressed in a variety of organs, but most strongly in adult testis and ovary followed by small intestine, colon, prostate, thymus, spleen, pancreas, skeletal muscle, heart, brain and kidney. Also expressed in umbilical vein endothelial cells, foreskin fibroblast and HEPG2 cells.,

Function :

function:Transcriptional repressor.,similarity:Belongs to the krueppel C2H2-type zinc-finger protein family.,similarity:Contains 1 SCAN box domain.,similarity:Contains 3 C2H2-type zinc fingers.,subunit:Homodimer.,tissue specificity:Expressed in a variety of organs, but most strongly in adult testis and ovary followed by small intestine, colon, prostate, thymus, spleen, pancreas, skeletal muscle, heart, brain and kidney. Also expressed in umbilical vein endothelial cells, foreskin fibroblast and HEPG2 cells.,

Subcellular Location :

Nucleus.

Expression :

Expressed in a variety of organs, but most strongly in adult testis and ovary followed by small intestine, colon, prostate, thymus, spleen, pancreas, skeletal muscle, heart, brain and kidney. Also expressed in umbilical vein endothelial cells, foreskin fibroblast and Hep-G2 cells.

Sort :

2531

No4 :

1

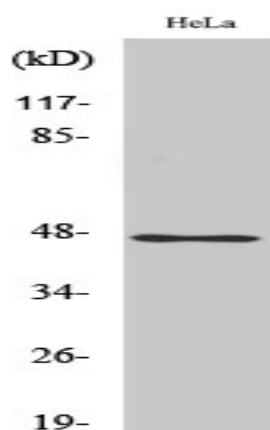
Host :

Rabbit

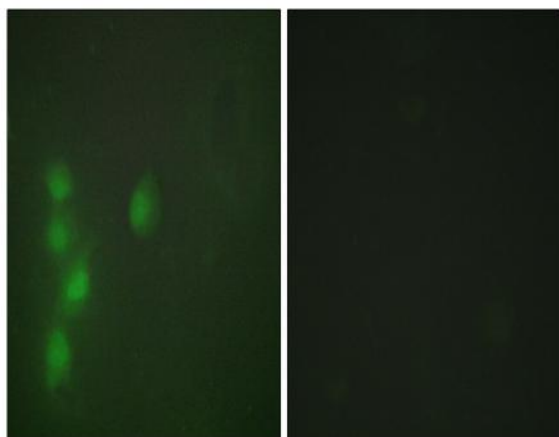
Modifications :

Unmodified

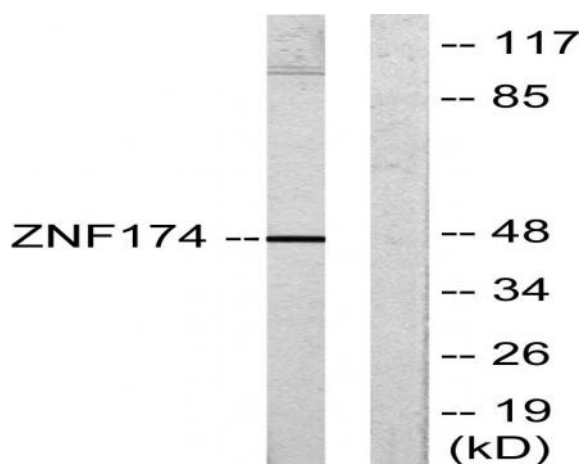
Products Images



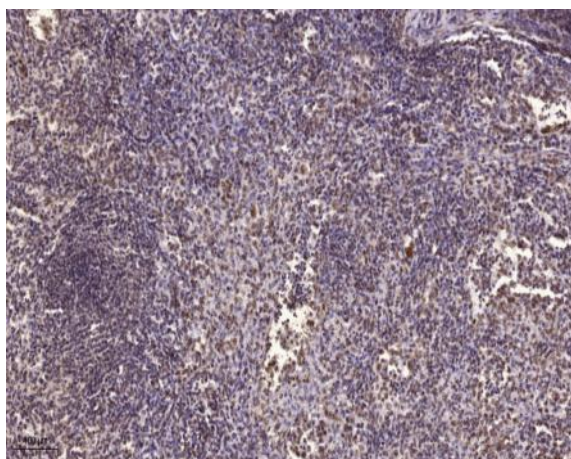
Western Blot analysis of various cells using AW-1 Polyclonal Antibody



Immunofluorescence analysis of HUVEC cells, using ZNF174 Antibody. The picture on the right is blocked with the synthesized peptide.



Western blot analysis of lysates from HeLa cells, using ZNF174 Antibody. The lane on the right is blocked with the synthesized peptide.



Immunohistochemical analysis of paraffin-embedded human spleen. 1, Tris-EDTA, pH9.0 was used for antigen retrieval. 2 Antibody was diluted at 1:200(4° overnight).3,Secondary antibody was diluted at 1:200(room temperature, 45min).