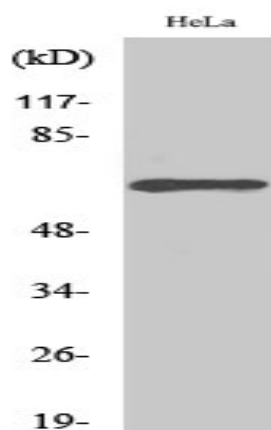


**ADCK5 Polyclonal Antibody**

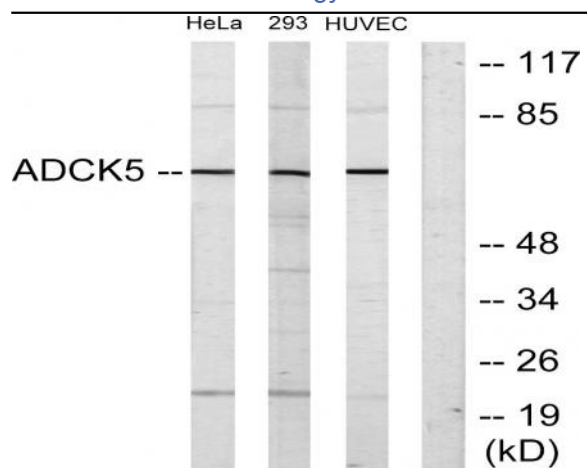
<b>Catalog No :</b>	YT0123
<b>Reactivity :</b>	Human;Mouse
<b>Applications :</b>	WB;IF;ELISA
<b>Target :</b>	ADCK5
<b>Gene Name :</b>	ADCK5
<b>Protein Name :</b>	Uncharacterized aarF domain-containing protein kinase 5
<b>Human Gene Id :</b>	203054
<b>Human Swiss Prot No :</b>	Q3MIX3
<b>Mouse Swiss Prot No :</b>	Q80V03
<b>Immunogen :</b>	The antiserum was produced against synthesized peptide derived from human ADCK5. AA range:151-200
<b>Specificity :</b>	ADCK5 Polyclonal Antibody detects endogenous levels of ADCK5 protein.
<b>Formulation :</b>	Liquid in PBS containing 50% glycerol, 0.5% BSA and 0.02% sodium azide.
<b>Source :</b>	Polyclonal, Rabbit,IgG
<b>Dilution :</b>	WB 1:500 - 1:2000. IF 1:200 - 1:1000. ELISA: 1:20000. Not yet tested in other applications.
<b>Purification :</b>	The antibody was affinity-purified from rabbit antiserum by affinity-chromatography using epitope-specific immunogen.
<b>Concentration :</b>	1 mg/ml
<b>Storage Stability :</b>	-15°C to -25°C/1 year(Do not lower than -25°C)
<b>Observed Band :</b>	66kD

<b>Background :</b>	function:The function of this protein is not yet clear. It is not known if it has protein kinase activity and what type of substrate it would phosphorylate (Ser, Thr or Tyr).,similarity:Belongs to the protein kinase superfamily. ADCK protein kinase family.,similarity:Contains 1 protein kinase domain.,
<b>Function :</b>	function:The function of this protein is not yet clear. It is not known if it has protein kinase activity and what type of substrate it would phosphorylate (Ser, Thr or Tyr).,similarity:Belongs to the protein kinase superfamily. ADCK protein kinase family.,similarity:Contains 1 protein kinase domain.,
<b>Subcellular Location :</b>	Membrane ; Single-pass membrane protein .
<b>Expression :</b>	Brain,Colon,Ovary,Prostate,Small intestine,
<b>Sort :</b>	1743
<b>No4 :</b>	1
<b>Host :</b>	Rabbit
<b>Modifications :</b>	Unmodified

## Products Images



Western Blot analysis of various cells using ADCK5 Polyclonal Antibody



Western blot analysis of lysates from HeLa, 293, and HUVEC cells, using ADCK5 Antibody. The lane on the right is blocked with the synthesized peptide.