

## Actinin- $\alpha$ 3 Polyclonal Antibody

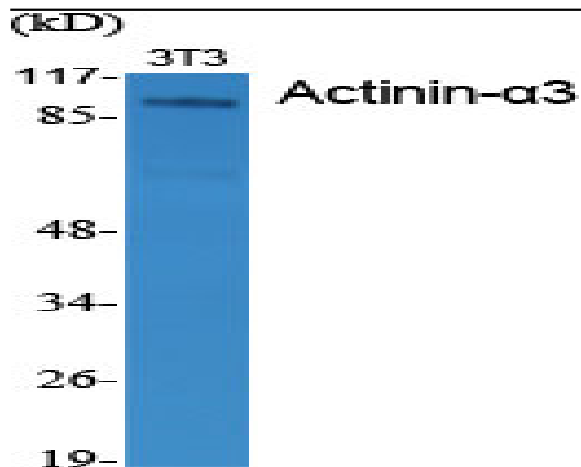
<b>Catalog No :</b>	YT0103
<b>Reactivity :</b>	Human;Mouse;Rat
<b>Applications :</b>	WB;IF;ELISA
<b>Target :</b>	Actinin- $\alpha$ 3
<b>Fields :</b>	>>Arrhythmogenic right ventricular cardiomyopathy
<b>Gene Name :</b>	ACTN3
<b>Protein Name :</b>	Alpha-actinin-3
<b>Human Gene Id :</b>	89
<b>Human Swiss Prot No :</b>	Q08043
<b>Mouse Gene Id :</b>	11474
<b>Mouse Swiss Prot No :</b>	O88990
<b>Immunogen :</b>	The antiserum was produced against synthesized peptide derived from human ACTN3. AA range:1-50
<b>Specificity :</b>	Actinin- $\alpha$ 3 Polyclonal Antibody detects endogenous levels of Actinin- $\alpha$ 3 protein.
<b>Formulation :</b>	Liquid in PBS containing 50% glycerol, 0.5% BSA and 0.02% sodium azide.
<b>Source :</b>	Polyclonal, Rabbit,IgG
<b>Dilution :</b>	WB 1:500 - 1:2000. IF 1:200 - 1:1000. ELISA: 1:20000. Not yet tested in other applications.
<b>Purification :</b>	The antibody was affinity-purified from rabbit antiserum by affinity-chromatography using epitope-specific immunogen.
<b>Concentration :</b>	1 mg/ml

---

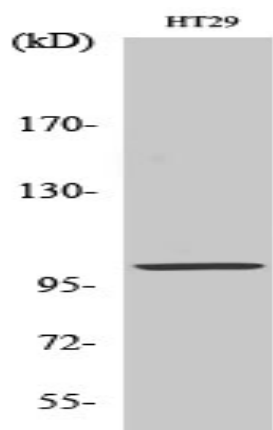
<b>Storage Stability :</b>	-15°C to -25°C/1 year(Do not lower than -25°C)
<b>Observed Band :</b>	103kD
<b>Cell Pathway :</b>	Focal adhesion;Adherens_Junction;Adherens_Junction;Leukocyte transendothelial migration;Regulates Actin and Cytoskeleton;Systemic lupus erythematosus;Arrhythmogenic right ventricular cardiomyopathy (A)
<b>Background :</b>	This gene encodes a member of the alpha-actin binding protein gene family. The encoded protein is primarily expressed in skeletal muscle and functions as a structural component of sarcomeric Z line. This protein is involved in crosslinking actin containing thin filaments. An allelic polymorphism in this gene results in both coding and non-coding variants; the reference genome represents the coding allele. The non-functional allele of this gene is associated with elite athlete status. [provided by RefSeq, Feb 2014],
<b>Function :</b>	function:F-actin cross-linking protein which is thought to anchor actin to a variety of intracellular structures. This is a bundling protein.,polymorphism:About 18% of the world population lack a functional ACTN3 due to a stop codon polymorphism at position 577. The absence of a functional ACTN3 expression is not correlated with a disease state.,sequence caution:According to the human genome assembly there is a stop codon in position 577 which is only found in 18% of the world population.,similarity:Belongs to the alpha-actinin family.,similarity:Contains 1 actin-binding domain.,similarity:Contains 2 CH (calponin-homology) domains.,similarity:Contains 2 EF-hand domains.,similarity:Contains 4 spectrin repeats.,subunit:Homodimer; antiparallel. Also forms heterodimers with ACTN2. Interacts with MYOZ1.,tissue specificity:Expressed only in a subset of type 2 skeletal muscle fibers.,
<b>Subcellular Location :</b>	intracellular,cytosol,actin filament,brush border,focal adhesion,Z disc,pseudopodium,extracellular exosome,
<b>Expression :</b>	Expressed only in a subset of type 2 skeletal muscle fibers.
<b>Sort :</b>	1710
<b>No4 :</b>	1
<b>Host :</b>	Rabbit
<b>Modifications :</b>	Unmodified

---

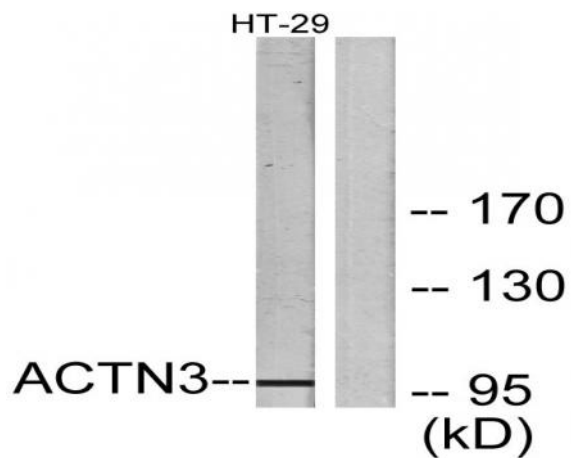
## Products Images



Western Blot analysis of various cells using Actinin- $\alpha$ 3 Polyclonal Antibody



Western Blot analysis of HT29 cells using Actinin- $\alpha$ 3 Polyclonal Antibody



Western blot analysis of lysates from HT-29 cells, using ACTN3 Antibody. The lane on the right is blocked with the synthesized peptide.