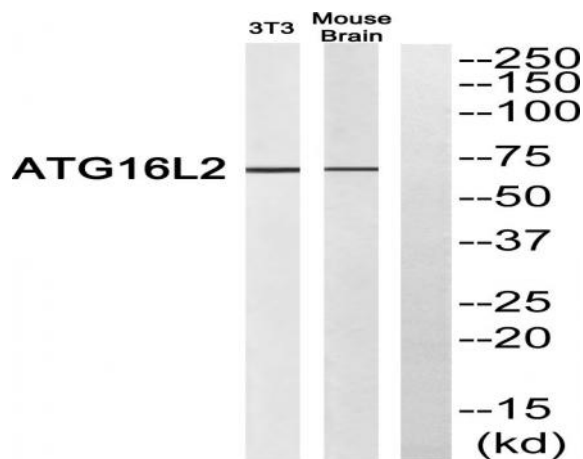


Atg16L2 Polyclonal Antibody

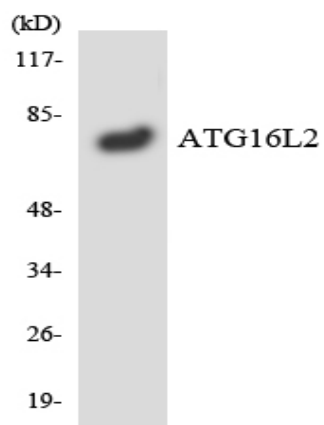
Catalog No :	YT0392
Reactivity :	Human;Rat;Mouse;
Applications :	WB;ELISA
Target :	Atg16L2
Fields :	>>Autophagy - animal
Gene Name :	ATG16L2
Protein Name :	Autophagy-related protein 16-2
Human Gene Id :	89849
Human Swiss Prot No :	Q8NAA4
Mouse Swiss Prot No :	Q6KAU8
Immunogen :	The antiserum was produced against synthesized peptide derived from human ATG16L2. AA range:241-290
Specificity :	Atg16L2 Polyclonal Antibody detects endogenous levels of Atg16L2 protein.
Formulation :	Liquid in PBS containing 50% glycerol, 0.5% BSA and 0.02% sodium azide.
Source :	Polyclonal, Rabbit,IgG
Dilution :	WB 1:500 - 1:2000. ELISA: 1:20000. Not yet tested in other applications.
Purification :	The antibody was affinity-purified from rabbit antiserum by affinity-chromatography using epitope-specific immunogen.
Concentration :	1 mg/ml
Storage Stability :	-15°C to -25°C/1 year(Do not lower than -25°C)

Observed Band :	70kD
Background :	function:May play a role in autophagy.,similarity:Belongs to the WD repeat ATG16 family.,similarity:Contains 7 WD repeats.,
Function :	function:May play a role in autophagy.,similarity:Belongs to the WD repeat ATG16 family.,similarity:Contains 7 WD repeats.,
Subcellular Location :	Cytoplasm, cytosol . Localizes also to discrete punctae along the ciliary axoneme. .
Expression :	Astrocyte,Blood,Eye,Spleen,Stomach,
Sort :	2386
No4 :	1
Host :	Rabbit
Modifications :	Unmodified

Products Images



Western blot analysis of ATG16L2 Antibody. The lane on the right is blocked with the ATG16L2 peptide.



Western blot analysis of the lysates from RAW264.7 cells using ATG16L2 antibody.