

## ACSS1 Polyclonal Antibody

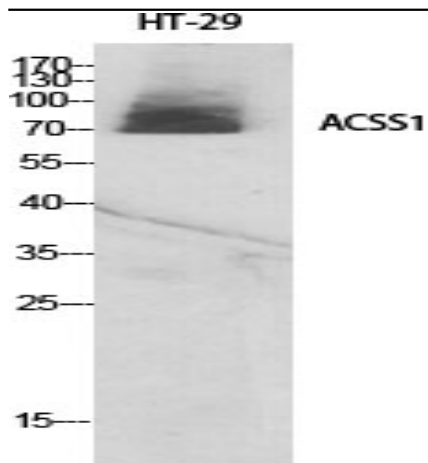
<b>Catalog No :</b>	YT0093
<b>Reactivity :</b>	Human;Mouse
<b>Applications :</b>	WB;IHC;IF;ELISA
<b>Target :</b>	ACSS1
<b>Fields :</b>	>>Glycolysis / Gluconeogenesis;>>Pyruvate metabolism;>>Glyoxylate and dicarboxylate metabolism;>>Propanoate metabolism;>>Metabolic pathways;>>Carbon metabolism
<b>Gene Name :</b>	ACSS1
<b>Protein Name :</b>	Acetyl-coenzyme A synthetase 2-like mitochondrial
<b>Human Gene Id :</b>	84532
<b>Human Swiss Prot No :</b>	Q9NUB1
<b>Mouse Gene Id :</b>	68738
<b>Mouse Swiss Prot No :</b>	Q99NB1
<b>Immunogen :</b>	The antiserum was produced against synthesized peptide derived from human ACSS1. AA range:611-660
<b>Specificity :</b>	ACSS1 Polyclonal Antibody detects endogenous levels of ACSS1 protein.
<b>Formulation :</b>	Liquid in PBS containing 50% glycerol, 0.5% BSA and 0.02% sodium azide.
<b>Source :</b>	Polyclonal, Rabbit,IgG
<b>Dilution :</b>	WB 1:500 - 1:2000. IHC 1:100 - 1:300. ELISA: 1:40000.. IF 1:50-200
<b>Purification :</b>	The antibody was affinity-purified from rabbit antiserum by affinity-chromatography using epitope-specific immunogen.

---

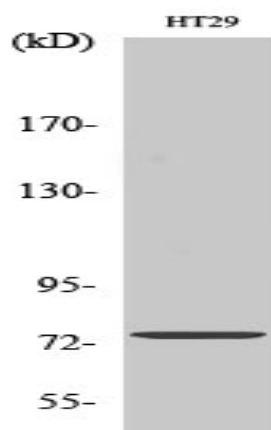
<b>Concentration :</b>	1 mg/ml
<b>Storage Stability :</b>	-15°C to -25°C/1 year(Do not lower than -25°C)
<b>Observed Band :</b>	75kD
<b>Cell Pathway :</b>	Glycolysis / Gluconeogenesis;Pyruvate metabolism;Propanoate metabolism;
<b>Background :</b>	This gene encodes a mitochondrial acetyl-CoA synthetase enzyme. A similar protein in mice plays an important role in the tricarboxylic acid cycle by catalyzing the conversion of acetate to acetyl CoA. Alternatively spliced transcript variants encoding multiple isoforms have been observed for this gene. [provided by RefSeq, Nov 2011],
<b>Function :</b>	catalytic activity:ATP + acetate + CoA = AMP + diphosphate + acetyl-CoA.,function:Converts acetate to acetyl-CoA so that it can be used for oxidation through the tricarboxylic cycle to produce ATP and CO(2).,sequence caution:Sequencing errors.,similarity:Belongs to the ATP-dependent AMP-binding enzyme family.,
<b>Subcellular Location :</b>	Mitochondrion matrix .
<b>Expression :</b>	Amygdala,Brain,PCR rescued clones,Placenta,Spleen,Stomach,T
<b>Sort :</b>	1672
<b>No4 :</b>	1
<b>Host :</b>	Rabbit
<b>Modifications :</b>	Unmodified

---

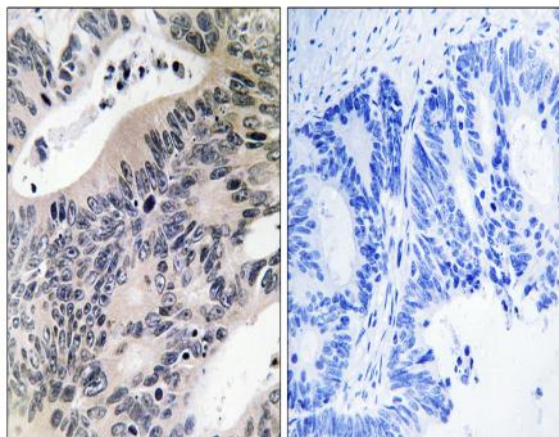
## Products Images



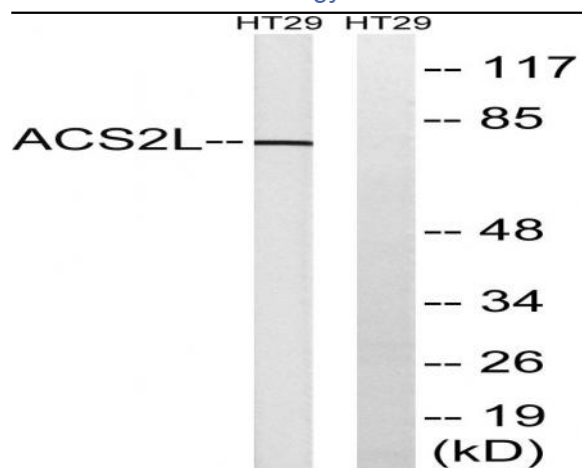
Western Blot analysis of various cells using ACSS1 Polyclonal Antibody



Western Blot analysis of HT29 cells using ACSS1 Polyclonal Antibody



Immunohistochemistry analysis of paraffin-embedded human colon carcinoma tissue, using ACSS1 Antibody. The picture on the right is blocked with the synthesized peptide.



Western blot analysis of lysates from HT-29 cells, using ACSS1 Antibody. The lane on the right is blocked with the synthesized peptide.