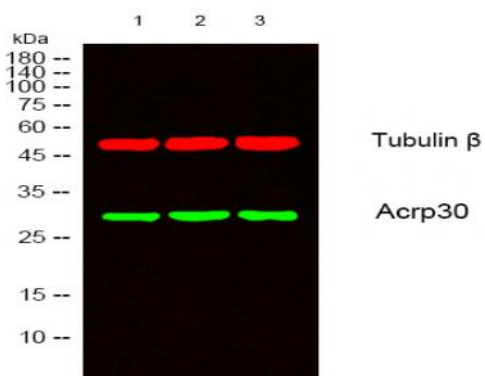



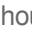
## Acrp30 Polyclonal Antibody

<b>Catalog No :</b>	YT0091
<b>Reactivity :</b>	Human;Mouse;Rat
<b>Applications :</b>	WB;ELISA
<b>Target :</b>	Acrp30
<b>Fields :</b>	>>PPAR signaling pathway;>>AMPK signaling pathway;>>Longevity regulating pathway;>>Adipocytokine signaling pathway;>>Type II diabetes mellitus;>>Non-alcoholic fatty liver disease;>>Alcoholic liver disease
<b>Gene Name :</b>	ADIPOQ
<b>Protein Name :</b>	Adiponectin
<b>Human Gene Id :</b>	9370
<b>Human Swiss Prot No :</b>	Q15848
<b>Mouse Gene Id :</b>	11450
<b>Mouse Swiss Prot No :</b>	Q60994
<b>Immunogen :</b>	The antiserum was produced against synthesized peptide derived from human Acrp30. AA range:6-55
<b>Specificity :</b>	Acrp30 Polyclonal Antibody detects endogenous levels of Acrp30 protein.
<b>Formulation :</b>	Liquid in PBS containing 50% glycerol, 0.5% BSA and 0.02% sodium azide.
<b>Source :</b>	Polyclonal, Rabbit,IgG
<b>Dilution :</b>	WB 1:500 - 1:2000. ELISA: 1:10000. Not yet tested in other applications.
<b>Purification :</b>	The antibody was affinity-purified from rabbit antiserum by affinity-chromatography using epitope-specific immunogen.

<b>Concentration :</b>	1 mg/ml
<b>Storage Stability :</b>	-15°C to -25°C/1 year(Do not lower than -25°C)
<b>Observed Band :</b>	30kD
<b>Cell Pathway :</b>	PPAR;Adipocytokine;Type II diabetes mellitus;
<b>Background :</b>	adiponectin, C1Q and collagen domain containing(ADIPOQ) Homo sapiens This gene is expressed in adipose tissue exclusively. It encodes a protein with similarity to collagens X and VIII and complement factor C1q. The encoded protein circulates in the plasma and is involved with metabolic and hormonal processes. Mutations in this gene are associated with adiponectin deficiency. Multiple alternatively spliced variants, encoding the same protein, have been identified. [provided by RefSeq, Apr 2010],
<b>Function :</b>	disease:Defects in ADIPOQ are the cause of adiponectin deficiency (ADPND) [MIM:612556]. ADPND results in very low concentrations of plasma adiponectin.,disease:Genetic variations in ADIPOQ are associated with non-insulin-dependent diabetes mellitus (NIDDM) [MIM:125853]; also known as diabetes mellitus type 2. NIDDM is characterized by an autosomal dominant mode of inheritance, onset during adulthood and insulin resistance.,domain:The C1q domain is commonly called the globular domain.,function:Important adipokine involved in the control of fat metabolism and insulin sensitivity, with direct anti-diabetic, anti-atherogenic and anti-inflammatory activities. Stimulates AMPK phosphorylation and activation in the liver and the skeletal muscle, enhancing glucose utilization and fatty-acid combustion. Antagonizes TNF-alpha by negatively regulating its expression in various tissues such as liver
<b>Subcellular Location :</b>	Secreted .
<b>Expression :</b>	Synthesized exclusively by adipocytes and secreted into plasma.
<b>Tag :</b>	hot
<b>Sort :</b>	1667
<b>No4 :</b>	1
<b>Host :</b>	Rabbit
<b>Modifications :</b>	Unmodified

## Products Images



Western blot analysis of lysates from 1) HeLa, 2) VEC, 3) 293 cells,  primary antibody was diluted at 1:1000, 4° over night, secondary antibody(cat:RS23920)was diluted at 1:10000, 37° 1 hour.  Tubulin  $\beta$  Monoclonal Antibody(5G3) (cat:YM3030) antibody was diluted at 1:5000 as loading control, 4° over night,secondary antibody(cat:RS23710)was diluted at 1:10000, 37° 1 hour.