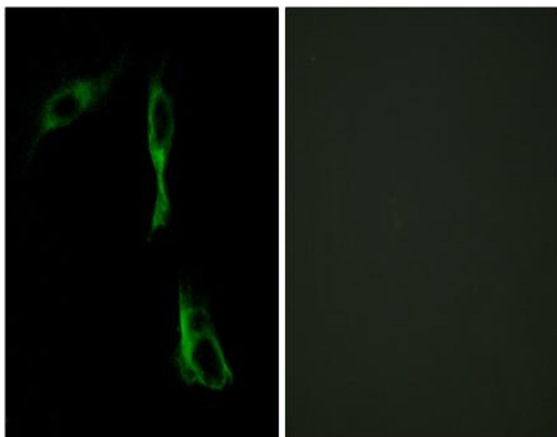


AR- α 1D Polyclonal Antibody

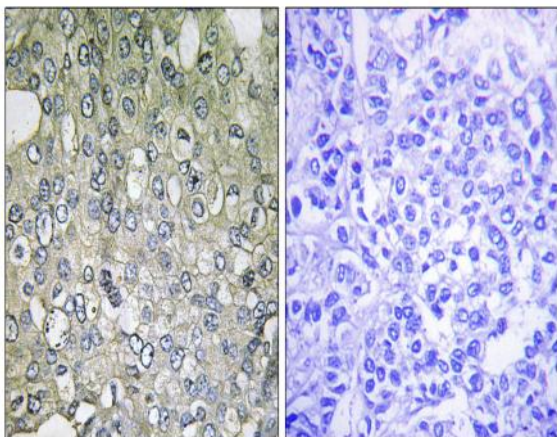
Catalog No :	YT0357
Reactivity :	Human;Rat;Mouse;
Applications :	IHC;IF;ELISA
Target :	AR- α 1D
Fields :	>>Calcium signaling pathway;>>cGMP-PKG signaling pathway;>>Neuroactive ligand-receptor interaction;>>Adrenergic signaling in cardiomyocytes;>>Vascular smooth muscle contraction;>>Salivary secretion
Gene Name :	ADRA1D
Protein Name :	Alpha-1D adrenergic receptor
Human Gene Id :	146
Human Swiss Prot No :	P25100
Mouse Swiss Prot No :	P97714
Immunogen :	The antiserum was produced against synthesized peptide derived from human ADRA1D. AA range:451-500
Specificity :	AR- α 1D Polyclonal Antibody detects endogenous levels of AR- α 1D protein.
Formulation :	Liquid in PBS containing 50% glycerol, 0.5% BSA and 0.02% sodium azide.
Source :	Polyclonal, Rabbit,IgG
Dilution :	IHC 1:100 - 1:300. IF 1:200 - 1:1000. ELISA: 1:20000. Not yet tested in other applications.
Purification :	The antibody was affinity-purified from rabbit antiserum by affinity-chromatography using epitope-specific immunogen.
Concentration :	1 mg/ml

Storage Stability :	-15°C to -25°C/1 year(Do not lower than -25°C)
Molecularweight :	60kD
Cell Pathway :	Calcium;Neuroactive ligand-receptor interaction;Vascular smooth muscle contraction;
Background :	Alpha-1-adrenergic receptors (alpha-1-ARs) are members of the G protein-coupled receptor superfamily. They activate mitogenic responses and regulate growth and proliferation of many cells. There are 3 alpha-1-AR subtypes: alpha-1A, -1B and -1D, all of which signal through the Gq/11 family of G-proteins and different subtypes show different patterns of activation. This gene encodes alpha-1D-adrenergic receptor. Similar to alpha-1B-adrenergic receptor gene, this gene comprises 2 exons and a single intron that interrupts the coding region. [provided by RefSeq, Jul 2008],
Function :	function:This alpha-adrenergic receptor mediates its effect through the influx of extracellular calcium.,similarity:Belongs to the G-protein coupled receptor 1 family.,
Subcellular Location :	Cell membrane; Multi-pass membrane protein.
Expression :	Hippocampus,Placenta,Prostate,
Sort :	2299
No4 :	1
Host :	Rabbit
Modifications :	Unmodified

Products Images



Immunofluorescence analysis of HeLa cells, using ADRA1D Antibody. The picture on the right is blocked with the synthesized peptide.



Immunohistochemistry analysis of paraffin-embedded human breast carcinoma tissue, using ADRA1D Antibody. The picture on the right is blocked with the synthesized peptide.