

**ABHD6 Polyclonal Antibody**

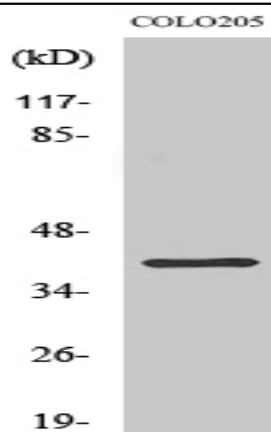
<b>Catalog No :</b>	YT0061
<b>Reactivity :</b>	Human;Mouse;Rat
<b>Applications :</b>	WB;IF;ELISA
<b>Target :</b>	ABHD6
<b>Fields :</b>	>>Retrograde endocannabinoid signaling
<b>Gene Name :</b>	ABHD6
<b>Protein Name :</b>	Monoacylglycerol lipase ABHD6
<b>Human Gene Id :</b>	57406
<b>Human Swiss Prot No :</b>	Q9BV23
<b>Mouse Gene Id :</b>	66082
<b>Mouse Swiss Prot No :</b>	Q8R2Y0
<b>Rat Gene Id :</b>	305795
<b>Rat Swiss Prot No :</b>	Q5XI64
<b>Immunogen :</b>	The antiserum was produced against synthesized peptide derived from human ABHD6. AA range:231-280
<b>Specificity :</b>	ABHD6 Polyclonal Antibody detects endogenous levels of ABHD6 protein.
<b>Formulation :</b>	Liquid in PBS containing 50% glycerol, 0.5% BSA and 0.02% sodium azide.
<b>Source :</b>	Polyclonal, Rabbit,IgG
<b>Dilution :</b>	WB 1:500 - 1:2000. IF 1:200 - 1:1000. ELISA: 1:20000. Not yet tested in other applications.

---

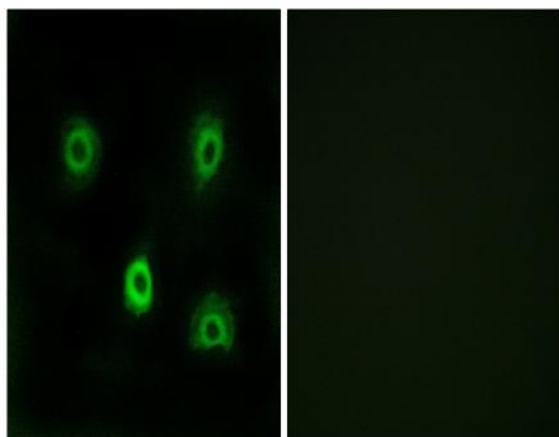
<b>Purification :</b>	The antibody was affinity-purified from rabbit antiserum by affinity-chromatography using epitope-specific immunogen.
<b>Concentration :</b>	1 mg/ml
<b>Storage Stability :</b>	-15°C to -25°C/1 year(Do not lower than -25°C)
<b>Observed Band :</b>	38kD
<b>Background :</b>	catalytic activity:Hydrolyzes glycerol monoesters of long-chain fatty acids.,function:Has 2-arachidonoylglycerol hydrolase activity (By similarity). May be a regulator of endocannabinoid signaling pathways.,similarity:Belongs to the AB hydrolase superfamily.,
<b>Function :</b>	catalytic activity:Hydrolyzes glycerol monoesters of long-chain fatty acids.,function:Has 2-arachidonoylglycerol hydrolase activity (By similarity). May be a regulator of endocannabinoid signaling pathways.,similarity:Belongs to the AB hydrolase superfamily.,
<b>Subcellular Location :</b>	Late endosome membrane ; Single-pass type II membrane protein . Lysosome membrane ; Single-pass type II membrane protein . Mitochondrion membrane ; Single-pass type II membrane protein .
<b>Expression :</b>	Cerebellum,Hepatoma,Lung,Pituitary,Skin,
<b>Sort :</b>	1594
<b>No4 :</b>	1
<b>Host :</b>	Rabbit
<b>Modifications :</b>	Unmodified

---

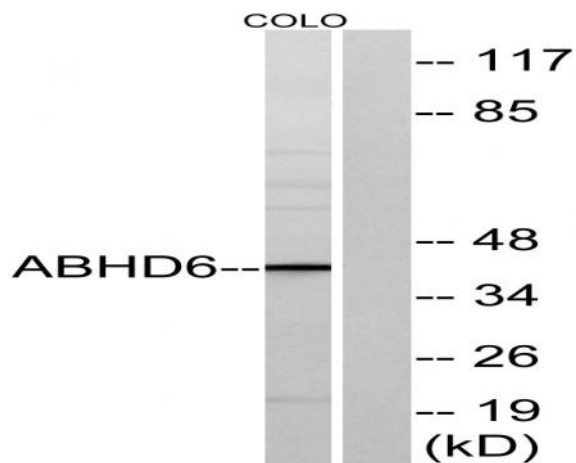
## Products Images



Western Blot analysis of various cells using ABHD6 Polyclonal Antibody



Immunofluorescence analysis of A549 cells, using ABHD6 Antibody. The picture on the right is blocked with the synthesized peptide.



Western blot analysis of lysates from COLO cells, using ABHD6 Antibody. The lane on the right is blocked with the synthesized peptide.