

ABHD4 Polyclonal Antibody

Catalog No :	YT0060
Reactivity :	Human;Mouse
Applications :	IHC;IF;ELISA
Target :	ABHD4
Gene Name :	ABHD4
Protein Name :	Abhydrolase domain-containing protein 4
Human Gene Id :	63874
Human Swiss Prot No :	Q8TB40
Mouse Gene Id :	105501
Mouse Swiss Prot No :	Q8VD66
Immunogen :	The antiserum was produced against synthesized peptide derived from human ABHD4. AA range:251-300
Specificity :	ABHD4 Polyclonal Antibody detects endogenous levels of ABHD4 protein.
Formulation :	Liquid in PBS containing 50% glycerol, 0.5% BSA and 0.02% sodium azide.
Source :	Polyclonal, Rabbit,IgG
Dilution :	IHC 1:100 - 1:300. ELISA: 1:20000.. IF 1:50-200
Purification :	The antibody was affinity-purified from rabbit antiserum by affinity-chromatography using epitope-specific immunogen.
Concentration :	1 mg/ml
Storage Stability :	-15°C to -25°C/1 year(Do not lower than -25°C)

Molecularweight : 39kD

Background :

caution:Thr-291 is present instead of the conserved His which is expected to be an active site residue.,function:Lysophospholipase selective for N-acyl phosphatidylethanolamine (NAPE). Contributes to the biosynthesis of N-acyl ethanolamines, including the endocannabinoid anandamide by hydrolyzing the sn-1 and sn-2 acyl chains from N-acyl phosphatidylethanolamine (NAPE) generating glycerophospho-N-acyl ethanolamine (GP-NAE), an intermediate for N-acyl ethanolamine biosynthesis. Hydrolyzes substrates bearing saturated, monounsaturated, polyunsaturated N-acyl chains. Shows no significant activity towards other lysophospholipids, including lysophosphatidylcholine, lysophosphatidylethanolamine and lysophosphatidylserine.,similarity:Belongs to the peptidase S33 family. ABHD4/ABHD5 subfamily.,

Function :

caution:Thr-291 is present instead of the conserved His which is expected to be an active site residue.,function:Lysophospholipase selective for N-acyl phosphatidylethanolamine (NAPE). Contributes to the biosynthesis of N-acyl ethanolamines, including the endocannabinoid anandamide by hydrolyzing the sn-1 and sn-2 acyl chains from N-acyl phosphatidylethanolamine (NAPE) generating glycerophospho-N-acyl ethanolamine (GP-NAE), an intermediate for N-acyl ethanolamine biosynthesis. Hydrolyzes substrates bearing saturated, monounsaturated, polyunsaturated N-acyl chains. Shows no significant activity towards other lysophospholipids, including lysophosphatidylcholine, lysophosphatidylethanolamine and lysophosphatidylserine.,similarity:Belongs to the peptidase S33 family. ABHD4/ABHD5 subfamily.,

Subcellular Location :

endoplasmic reticulum membrane,lipid particle,

Expression :

Cervix,

Sort :

1593

No4 :

1

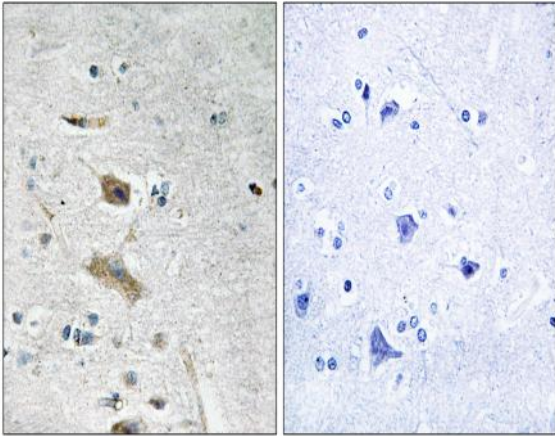
Host :

Rabbit

Modifications :

Unmodified

Products Images



Immunohistochemistry analysis of paraffin-embedded human brain tissue, using ABHD4 Antibody. The picture on the right is blocked with the synthesized peptide.