

**ABHD14B Polyclonal Antibody**

<b>Catalog No :</b>	YT0058
<b>Reactivity :</b>	Human;Rat
<b>Applications :</b>	IHC;IF;ELISA
<b>Target :</b>	ABHD14B
<b>Gene Name :</b>	ABHD14B
<b>Protein Name :</b>	Abhydrolase domain-containing protein 14B
<b>Human Gene Id :</b>	84836
<b>Human Swiss Prot No :</b>	Q96IU4
<b>Mouse Swiss Prot No :</b>	Q8VCR7
<b>Rat Gene Id :</b>	300983
<b>Rat Swiss Prot No :</b>	Q6DGG1
<b>Immunogen :</b>	The antiserum was produced against synthesized peptide derived from human ABHD14B. AA range:161-210
<b>Specificity :</b>	ABHD14B Polyclonal Antibody detects endogenous levels of ABHD14B protein.
<b>Formulation :</b>	Liquid in PBS containing 50% glycerol, 0.5% BSA and 0.02% sodium azide.
<b>Source :</b>	Polyclonal, Rabbit,IgG
<b>Dilution :</b>	IHC 1:100 - 1:300. ELISA: 1:40000.. IF 1:50-200
<b>Purification :</b>	The antibody was affinity-purified from rabbit antiserum by affinity-chromatography using epitope-specific immunogen.
<b>Concentration :</b>	1 mg/ml

**Storage Stability :** -15°C to -25°C/1 year(Do not lower than -25°C)

**Molecularweight :** 22kD

**Background :** function:Has hydrolase activity towards p-nitrophenyl butyrate (in vitro). May activate transcription.,similarity:Belongs to the AB hydrolase superfamily. ABHD14 family.,subcellular location:Predominantly cytoplasmic.,subunit:May interact with TAF1.,tissue specificity:Ubiquitous. Detected in spleen, thymus, prostate, testis, ovary, small intestine, colon, peripheral blood leukocyte, heart, placenta, lung, liver, skeletal muscle, pancreas and kidney.,

**Function :** function:Has hydrolase activity towards p-nitrophenyl butyrate (in vitro). May activate transcription.,similarity:Belongs to the AB hydrolase superfamily. ABHD14 family.,subcellular location:Predominantly cytoplasmic.,subunit:May interact with TAF1.,tissue specificity:Ubiquitous. Detected in spleen, thymus, prostate, testis, ovary, small intestine, colon, peripheral blood leukocyte, heart, placenta, lung, liver, skeletal muscle, pancreas and kidney.,

**Subcellular Location :** Cytoplasm . Nucleus . Predominantly cytoplasmic. .

**Expression :** Ubiquitous (PubMed:14672934). Detected in spleen, thymus, prostate, testis, ovary, small intestine, colon, peripheral blood leukocyte, heart, placenta, lung, liver, skeletal muscle, pancreas and kidney (PubMed:14672934).

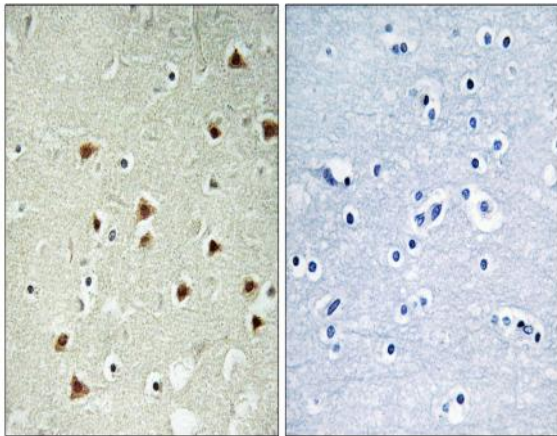
**Sort :** 1591

**No4 :** 1

**Host :** Rabbit

**Modifications :** Unmodified

## Products Images



Immunohistochemistry analysis of paraffin-embedded human brain tissue, using ABHD14B Antibody. The picture on the right is blocked with the synthesized peptide.