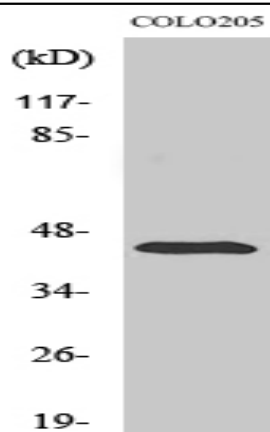


ABHD12 Polyclonal Antibody

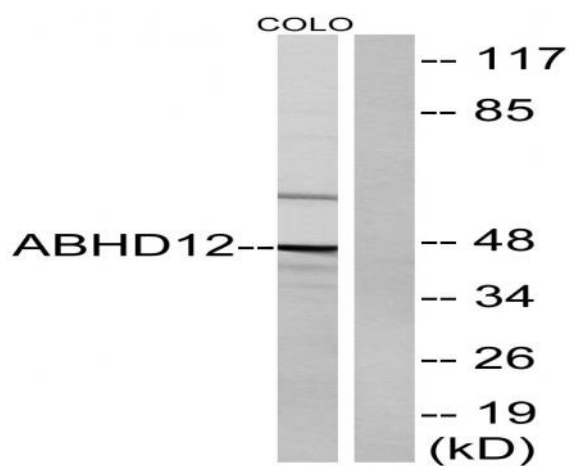
| | |
|------------------------------|---|
| Catalog No : | YT0055 |
| Reactivity : | Human;Mouse;Rat |
| Applications : | WB;IHC;IF;ELISA |
| Target : | ABHD12 |
| Gene Name : | ABHD12 |
| Protein Name : | Monoacylglycerol lipase ABHD12 |
| Human Gene Id : | 26090 |
| Human Swiss Prot No : | Q8N2K0 |
| Mouse Gene Id : | 76192 |
| Mouse Swiss Prot No : | Q99LR1 |
| Rat Gene Id : | 499913 |
| Rat Swiss Prot No : | Q6AYT7 |
| Immunogen : | The antiserum was produced against synthesized peptide derived from human ABHD12. AA range:231-280 |
| Specificity : | ABHD12 Polyclonal Antibody detects endogenous levels of ABHD12 protein. |
| Formulation : | Liquid in PBS containing 50% glycerol, 0.5% BSA and 0.02% sodium azide. |
| Source : | Polyclonal, Rabbit,IgG |
| Dilution : | WB 1:500 - 1:2000. IHC 1:100 - 1:300. ELISA: 1:40000.. IF 1:50-200 |
| Purification : | The antibody was affinity-purified from rabbit antiserum by affinity-chromatography using epitope-specific immunogen. |

| | |
|-------------------------------|--|
| Concentration : | 1 mg/ml |
| Storage Stability : | -15°C to -25°C/1 year(Do not lower than -25°C) |
| Observed Band : | 45kD |
| Background : | <p>This gene encodes an enzyme that catalyzes the hydrolysis of 2-arachidonoyl glycerol (2-AG), the main endocannabinoid lipid transmitter that acts on cannabinoid receptors, CB1 and CB2. The endocannabinoid system is involved in a wide range of physiological processes, including neurotransmission, mood, appetite, pain appreciation, addiction behavior, and inflammation. Mutations in this gene are associated with the neurodegenerative disease, PHARC (polyneuropathy, hearing loss, ataxia, retinitis pigmentosa, and cataract), resulting from an inborn error of endocannabinoid metabolism. Alternatively spliced transcript variants encoding different isoforms have been noted for this gene.[provided by RefSeq, Jan 2011],</p> |
| Function : | <p>catalytic activity:Hydrolyzes glycerol monoesters of long-chain fatty acids.,function:Has 2-arachidonoylglycerol hydrolase activity (By similarity). May be a regulator of endocannabinoid signaling pathways.,PTM:Glycosylated.,similarity:Belongs to the serine esterase family.,</p> |
| Subcellular Location : | Endoplasmic reticulum membrane ; Single-pass membrane protein . |
| Expression : | Cerebellum,Kidney,Ovarian carcinoma,Pancreas,Testis, |
| Sort : | 1588 |
| No4 : | 1 |
| Host : | Rabbit |
| Modifications : | Unmodified |

Products Images



Western Blot analysis of various cells using ABHD12 Polyclonal Antibody



Western blot analysis of lysates from COLO cells, using ABHD12 Antibody. The lane on the right is blocked with the synthesized peptide.