

**ABCF2 Polyclonal Antibody**

<b>Catalog No :</b>	YT0052
<b>Reactivity :</b>	Human;Mouse;Rat
<b>Applications :</b>	WB;ELISA
<b>Target :</b>	ABCF2
<b>Fields :</b>	>>Pathogenic Escherichia coli infection
<b>Gene Name :</b>	ABCF2
<b>Protein Name :</b>	ATP-binding cassette sub-family F member 2
<b>Human Gene Id :</b>	10061
<b>Human Swiss Prot No :</b>	Q9UG63
<b>Mouse Gene Id :</b>	27407
<b>Mouse Swiss Prot No :</b>	Q99LE6
<b>Immunogen :</b>	The antiserum was produced against synthesized peptide derived from human ABCF2. AA range:171-220
<b>Specificity :</b>	ABCF2 Polyclonal Antibody detects endogenous levels of ABCF2 protein.
<b>Formulation :</b>	Liquid in PBS containing 50% glycerol, 0.5% BSA and 0.02% sodium azide.
<b>Source :</b>	Polyclonal, Rabbit,IgG
<b>Dilution :</b>	WB 1:500 - 1:2000. ELISA: 1:5000. Not yet tested in other applications.
<b>Purification :</b>	The antibody was affinity-purified from rabbit antiserum by affinity-chromatography using epitope-specific immunogen.
<b>Concentration :</b>	1 mg/ml

**Storage Stability :** -15°C to -25°C/1 year(Do not lower than -25°C)

**Observed Band :** 70kD

**Background :** This gene encodes a member of the ATP-binding cassette (ABC) transporter superfamily. ATP-binding cassette proteins transport various molecules across extra- and intracellular membranes. Alterations in this gene may be involved in cancer progression. Alternative splicing results in multiple transcript variants. Related pseudogenes have been identified on chromosomes 3 and 7. [provided by RefSeq, Jul 2013],

**Function :** caution:Lacks transmembrane domains and is probably not involved in transport.,similarity:Belongs to the ABC transporter family.,similarity:Belongs to the ABC transporter family. EF3 subfamily.,similarity:Contains 2 ABC transporter domains.,

**Subcellular Location :** nucleosome,nucleus,mitochondrion,mitochondrial envelope,membrane,ATP-binding cassette (ABC) transporter complex,

**Expression :** Colon,Lung,Uterus,

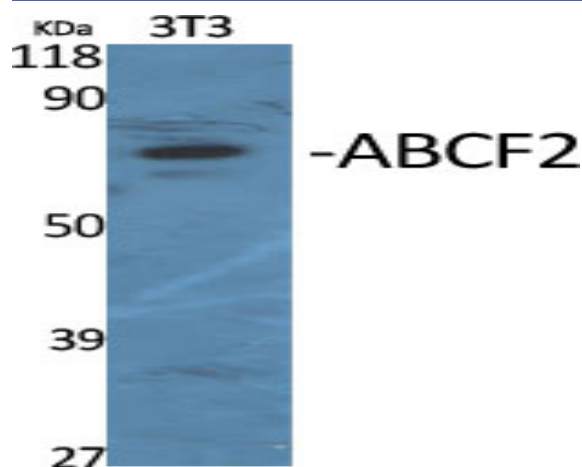
**Sort :** 1583

**No4 :** 1

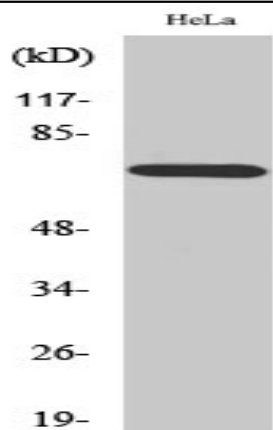
**Host :** Rabbit

**Modifications :** Unmodified

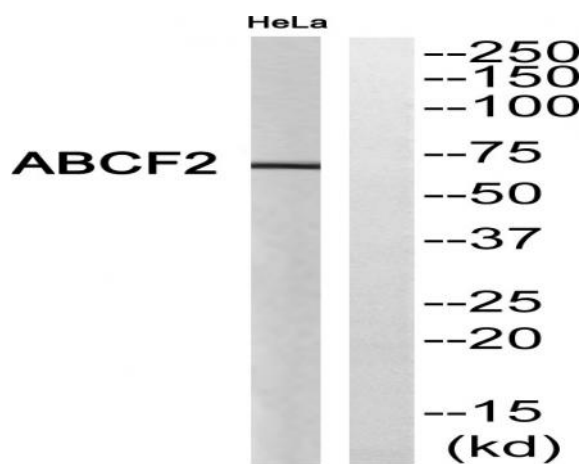
## Products Images



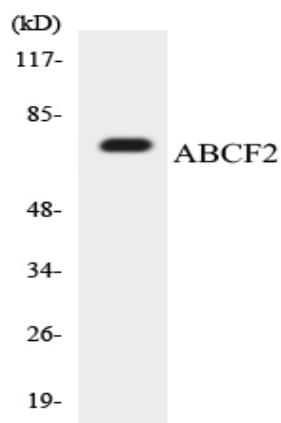
Western Blot analysis of various cells using ABCF2 Polyclonal Antibody



Western Blot analysis of HeLa cells using ABCF2 Polyclonal Antibody



Western blot analysis of ABCF2 Antibody. The lane on the right is blocked with the ABCF2 peptide.



Western blot analysis of the lysates from HepG2 cells using ABCF2 antibody.