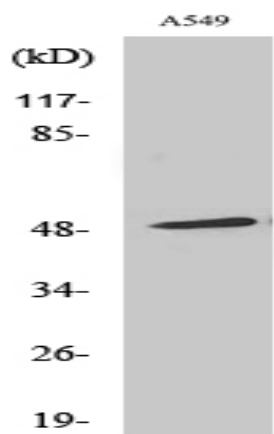


Arrestin- β -1 Polyclonal Antibody

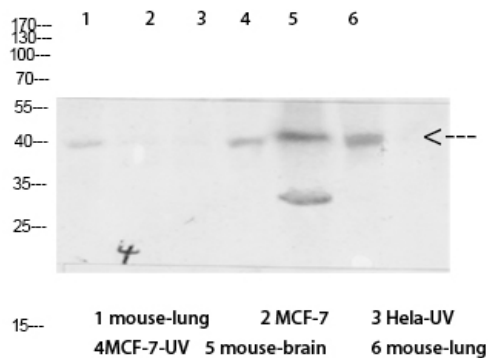
| | |
|------------------------------|---|
| Catalog No : | YT0343 |
| Reactivity : | Human;Monkey |
| Applications : | WB;IHC;IF;ELISA |
| Target : | Arrestin 1 |
| Fields : | >>MAPK signaling pathway;>>Chemokine signaling pathway;>>Endocytosis;>>Hedgehog signaling pathway;>>Dopaminergic synapse;>>Olfactory transduction;>>Relaxin signaling pathway;>>Parathyroid hormone synthesis, secretion and action;>>GnRH secretion;>>Morphine addiction;>>Chemical carcinogenesis - receptor activation |
| Gene Name : | ARRB1 |
| Protein Name : | Beta-arrestin-1 |
| Human Gene Id : | 408 |
| Human Swiss Prot No : | P49407 |
| Mouse Swiss Prot No : | Q8BWG8 |
| Immunogen : | The antiserum was produced against synthesized peptide derived from human Arrestin 1. AA range:369-418 |
| Specificity : | Arrestin- β -1 Polyclonal Antibody detects endogenous levels of Arrestin- β -1 protein. |
| Formulation : | Liquid in PBS containing 50% glycerol, 0.5% BSA and 0.02% sodium azide. |
| Source : | Polyclonal, Rabbit,IgG |
| Dilution : | WB 1:500 - 1:2000. IHC 1:100 - 1:300. IF 1:200 - 1:1000. ELISA: 1:10000. Not yet tested in other applications. |
| Purification : | The antibody was affinity-purified from rabbit antiserum by affinity-chromatography using epitope-specific immunogen. |

| | |
|-------------------------------|---|
| Concentration : | 1 mg/ml |
| Storage Stability : | -15°C to -25°C/1 year(Do not lower than -25°C) |
| Observed Band : | 47kD |
| Cell Pathway : | MAPK_ERK_Growth;MAPK_G_Protein;Chemokine;Endocytosis; |
| Background : | Members of arrestin/beta-arrestin protein family are thought to participate in agonist-mediated desensitization of G-protein-coupled receptors and cause specific dampening of cellular responses to stimuli such as hormones, neurotransmitters, or sensory signals. Arrestin beta 1 is a cytosolic protein and acts as a cofactor in the beta-adrenergic receptor kinase (BARK) mediated desensitization of beta-adrenergic receptors. Besides the central nervous system, it is expressed at high levels in peripheral blood leukocytes, and thus the BARK/beta-arrestin system is believed to play a major role in regulating receptor-mediated immune functions. Alternatively spliced transcripts encoding different isoforms of arrestin beta 1 have been described. [provided by RefSeq, Jan 2011], |
| Function : | function:Regulates beta-adrenergic receptor function. Beta-arrestins seem to bind phosphorylated beta-adrenergic receptors, thereby causing a significant impairment of their capacity to activate G(S) proteins.,online information:Arrestin entry,similarity:Belongs to the arrestin family., |
| Subcellular Location : | Cytoplasm. Nucleus. Cell membrane. Membrane, clathrin-coated pit . Cell projection, pseudopodium . Cytoplasmic vesicle. Translocates to the plasma membrane and colocalizes with antagonist-stimulated GPCRs. The monomeric form is predominantly located in the nucleus. The oligomeric form is located in the cytoplasm. Translocates to the nucleus upon stimulation of OPRD1 (By similarity). . |
| Expression : | Brain,Peripheral blood,Uterus, |
| Tag : | orthogonal |
| Sort : | 2282 |
| No4 : | 1 |
| Host : | Rabbit |
| Modifications : | Unmodified |

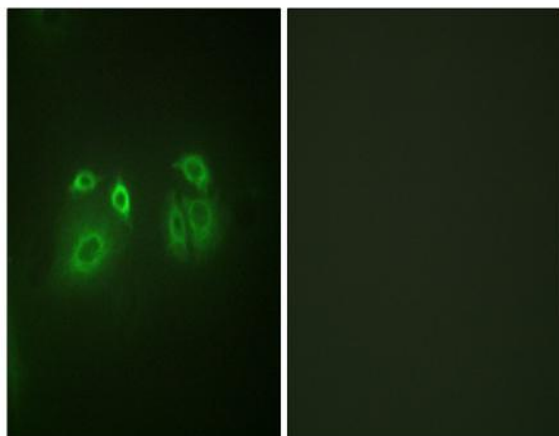
Products Images



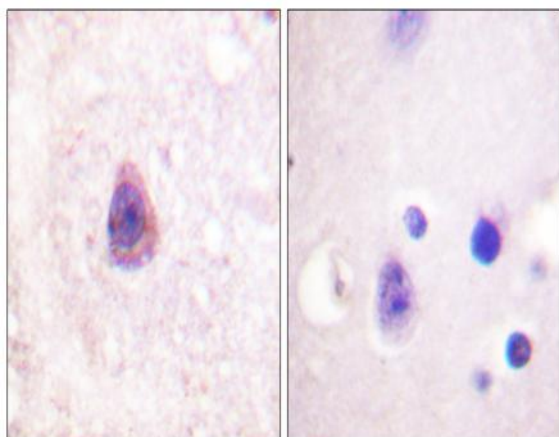
Western Blot analysis of various cells using Arrestin- β -1 Polyclonal Antibody diluted at 1:500



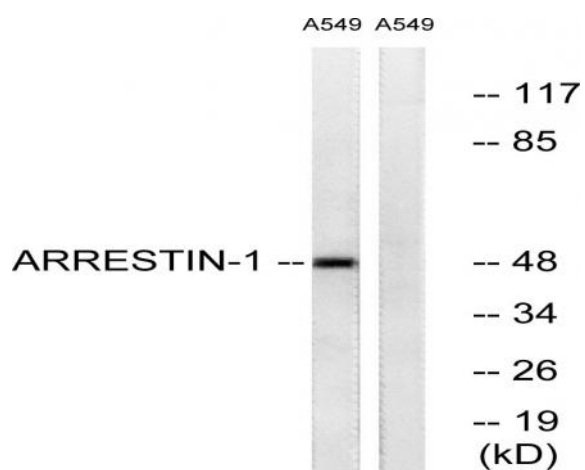
Western Blot analysis of various cells using Antibody diluted at 1:1000. Secondary antibody(catalog#:RS0002) was diluted at 1:20000



Immunofluorescence analysis of A549 cells, using Arrestin 1 Antibody. The picture on the right is blocked with the synthesized peptide.



Immunohistochemistry analysis of paraffin-embedded human brain tissue, using Arrestin 1 Antibody. The picture on the right is blocked with the synthesized peptide.



Western blot analysis of lysates from A549 cells, treated with Etoposide 25uM 60', using Arrestin 1 Antibody. The lane on the right is blocked with the synthesized peptide.