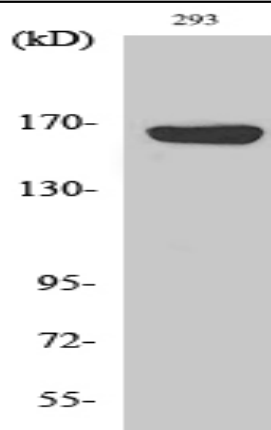


ABCC12 Polyclonal Antibody

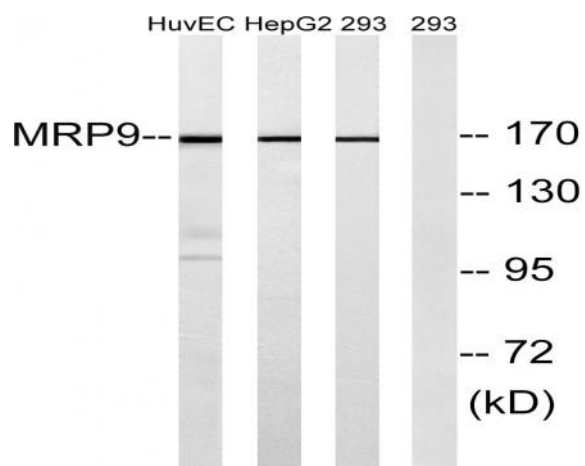
Catalog No :	YT0047
Reactivity :	Human;Rat;Mouse;
Applications :	WB;ELISA
Target :	ABCC12
Fields :	>>ABC transporters
Gene Name :	ABCC12
Protein Name :	Multidrug resistance-associated protein 9
Human Gene Id :	94160
Human Swiss Prot No :	Q96J65
Mouse Swiss Prot No :	Q80WJ6
Immunogen :	The antiserum was produced against synthesized peptide derived from human MRP9. AA range:691-740
Specificity :	ABCC12 Polyclonal Antibody detects endogenous levels of ABCC12 protein.
Formulation :	Liquid in PBS containing 50% glycerol, 0.5% BSA and 0.02% sodium azide.
Source :	Polyclonal, Rabbit,IgG
Dilution :	WB 1:500 - 1:2000. ELISA: 1:20000. Not yet tested in other applications.
Purification :	The antibody was affinity-purified from rabbit antiserum by affinity-chromatography using epitope-specific immunogen.
Concentration :	1 mg/ml
Storage Stability :	-15°C to -25°C/1 year(Do not lower than -25°C)

Observed Band :	170kD
Cell Pathway :	ABC transporters;
Background :	<p>This gene is a member of the superfamily of ATP-binding cassette (ABC) transporters and the encoded protein contains two ATP-binding domains and 12 transmembrane regions. ABC proteins transport various molecules across extra- and intracellular membranes. ABC genes are divided into seven distinct subfamilies: ABC1, MDR/TAP, MRP, ALD, OABP, GCN20, and White. This gene is a member of the MRP subfamily which is involved in multi-drug resistance. This gene and another subfamily member are arranged head-to-tail on chromosome 16q12.1. Increased expression of this gene is associated with breast cancer. [provided by RefSeq, Jul 2008],</p>
Function :	<p>developmental stage:Expressed in fetal tissues.,function:Probable transporter.,similarity:Belongs to the ABC transporter family. Conjugate transporter (TC 3.A.1.208) subfamily.,similarity:Contains 2 ABC transmembrane type-1 domains.,similarity:Contains 2 ABC transporter domains.,tissue specificity:Expressed in testis (at protein level). Widely expressed at low level. Isoform 5 is specifically expressed in brain, testis and breast cancer cells.,</p>
Subcellular Location :	Endoplasmic reticulum membrane ; Multi-pass membrane protein .
Expression :	<p>Expressed in testis (at protein level). Widely expressed at low level (PubMed:11483364, PubMed:11688999, PubMed:12011458, PubMed:17472575). Isoform 5 is specifically expressed in brain, testis and breast cancer cells (PubMed:11483364, PubMed:11688999, PubMed:12011458).</p>
Sort :	1578
No4 :	1
Host :	Rabbit
Modifications :	Unmodified

Products Images



Western Blot analysis of various cells using ABCC12 Polyclonal Antibody diluted at 1:500



Western blot analysis of lysates from 293, HepG2, and HUVEC cells, using MRP9 Antibody. The lane on the right is blocked with the synthesized peptide.