

**ARHGAP9 Polyclonal Antibody**

<b>Catalog No :</b>	YT0320
<b>Reactivity :</b>	Human;Rat;Mouse;
<b>Applications :</b>	WB;IHC;IF;ELISA
<b>Target :</b>	ARHGAP9
<b>Gene Name :</b>	ARHGAP9
<b>Protein Name :</b>	Rho GTPase-activating protein 9
<b>Human Gene Id :</b>	64333
<b>Human Swiss Prot No :</b>	Q9BRR9
<b>Immunogen :</b>	The antiserum was produced against synthesized peptide derived from human RHG9. AA range:220-269
<b>Specificity :</b>	ARHGAP9 Polyclonal Antibody detects endogenous levels of ARHGAP9 protein.
<b>Formulation :</b>	Liquid in PBS containing 50% glycerol, 0.5% BSA and 0.02% sodium azide.
<b>Source :</b>	Polyclonal, Rabbit,IgG
<b>Dilution :</b>	WB 1:500 - 1:2000. IHC 1:100 - 1:300. ELISA: 1:40000.. IF 1:50-200
<b>Purification :</b>	The antibody was affinity-purified from rabbit antiserum by affinity-chromatography using epitope-specific immunogen.
<b>Concentration :</b>	1 mg/ml
<b>Storage Stability :</b>	-15°C to -25°C/1 year(Do not lower than -25°C)
<b>Observed Band :</b>	90kD
<b>Background :</b>	This gene encodes a member of the Rho-GAP family of GTPase activating

proteins. The protein has substantial GAP activity towards several Rho-family GTPases in vitro, converting them to an inactive GDP-bound state. It is implicated in regulating adhesion of hematopoietic cells to the extracellular matrix. Multiple transcript variants encoding different isoforms have been found for this gene. [provided by RefSeq, Jul 2008],

**Function :**

function:GTPase activator for the Rho-type GTPases by converting them to an inactive GDP-bound state. Has a substantial GAP activity toward CDC42 and RAC1 and less toward RHOA. Has a role in regulating adhesion of hematopoietic cells to the extracellular matrix.,similarity:Contains 1 PH domain.,similarity:Contains 1 Rho-GAP domain.,similarity:Contains 1 SH3 domain.,similarity:Contains 1 WW domain.,tissue specificity:Predominantly expressed in peripheral blood leukocytes, spleen, and thymus.,

**Subcellular Location :**

cytosol,

**Expression :**

Predominantly expressed in peripheral blood leukocytes, spleen, and thymus.

**Tag :**

hot

**Sort :**

1

**No4 :**

1

**Host :**

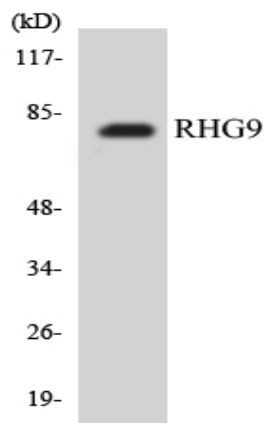
Rabbit

**Modifications :**

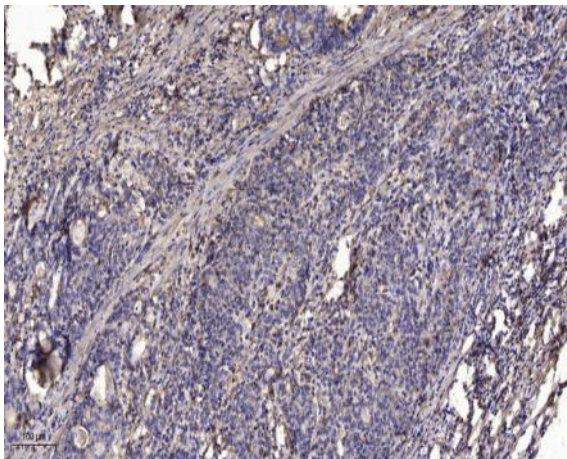
Unmodified

## Products Images





Western blot analysis of the lysates from COLO205 cells using RHG9 antibody.



Immunohistochemical analysis of paraffin-embedded human Gastric adenocarcinoma. 1, Antibody was diluted at 1:200(4° overnight). 2, Tris-EDTA,pH9.0 was used for antigen retrieval. 3,Secondary antibody was diluted at 1:200(room temperature, 45min).