

ARHGAP22 Polyclonal Antibody

Catalog No :	YT0318
Reactivity :	Human;Mouse
Applications :	WB;IHC;IF;ELISA
Target :	ARHGAP22
Gene Name :	ARHGAP22
Protein Name :	Rho GTPase-activating protein 22
Human Gene Id :	58504
Human Swiss Prot No :	Q7Z5H3
Mouse Swiss Prot No :	Q8BL80
Immunogen :	The antiserum was produced against synthesized peptide derived from human RHG22. AA range:565-614
Specificity :	ARHGAP22 Polyclonal Antibody detects endogenous levels of ARHGAP22 protein.
Formulation :	Liquid in PBS containing 50% glycerol, 0.5% BSA and 0.02% sodium azide.
Source :	Polyclonal, Rabbit,IgG
Dilution :	WB 1:500 - 1:2000. IHC 1:100 - 1:300. ELISA: 1:40000.. IF 1:50-200
Purification :	The antibody was affinity-purified from rabbit antiserum by affinity-chromatography using epitope-specific immunogen.
Concentration :	1 mg/ml
Storage Stability :	-15°C to -25°C/1 year(Do not lower than -25°C)
Observed Band :	77kD

Background : This gene encodes a member of the GTPase activating protein family which activates a GTPase belonging to the RAS superfamily of small GTP-binding proteins. The encoded protein is insulin-responsive, is dependent on the kinase Akt and requires the Akt-dependent 14-3-3 binding protein which binds sequentially to two serine residues. The result of these interactions is regulation of cell motility. Multiple transcript variants encoding different isoforms have been found for this gene. [provided by RefSeq, Dec 2011],

Function : function:Rho GTPase-activating protein involved in the signal transduction pathway that regulates endothelial cell capillary tube formation during angiogenesis. Acts as a GTPase activator for the RAC1 by converting it to an inactive GDP-bound state. Inhibits RAC1-dependent lamellipodia formation. May also play a role in transcription regulation via its interaction with VEZF1, by regulating activity of the endothelin-1 (EDN1) promoter.,similarity:Contains 1 PH domain.,similarity:Contains 1 Rho-GAP domain.,subcellular location:Mainly cytoplasmic. Some fraction is nuclear.,subunit:Interacts with VEZF1.,

Subcellular Location : Cytoplasm . Nucleus . Mainly cytoplasmic. Some fraction is nuclear (By similarity). .

Expression : Brain,Erythroleukemia,Lung,

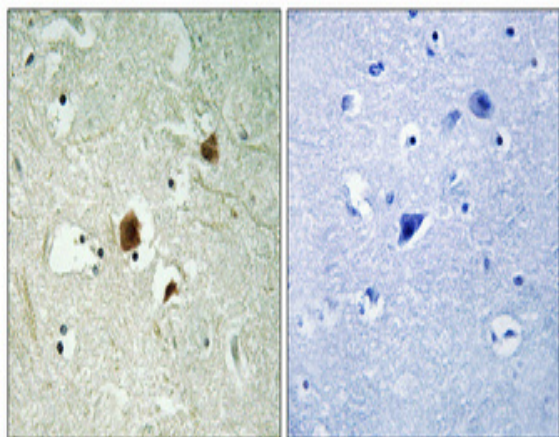
Sort : 2238

No4 : 1

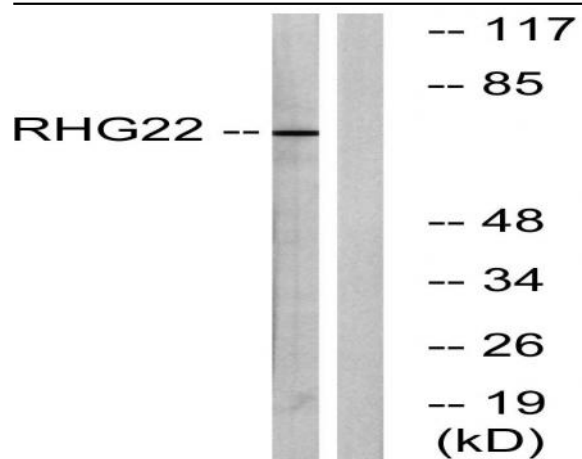
Host : Rabbit

Modifications : Unmodified

Products Images



Immunohistochemical analysis of paraffin-embedded Human brain. Antibody was diluted at 1:100(4° overnight). High-pressure and temperature Tris-EDTA,pH8.0 was used for antigen retrieval. Negative control (right) obtained from antibody was pre-absorbed by immunogen peptide.



Western blot analysis of lysates from K562 cells, using RHG22 Antibody. The lane on the right is blocked with the synthesized peptide.