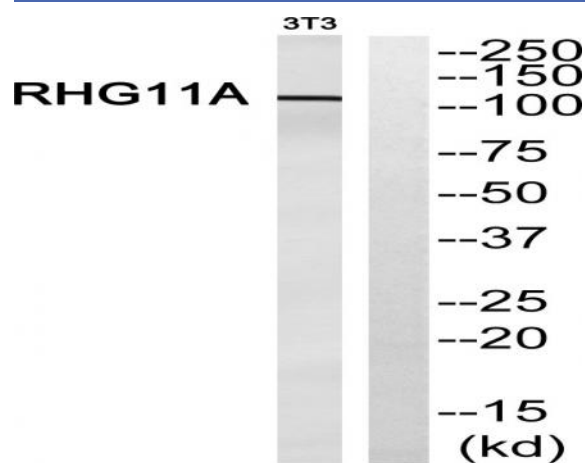


ARHGAP11A Polyclonal Antibody

Catalog No :	YT0314
Reactivity :	Human;Mouse
Applications :	WB;ELISA
Target :	ARHGAP11A
Gene Name :	ARHGAP11A
Protein Name :	Rho GTPase-activating protein 11A
Human Gene Id :	9824
Human Swiss Prot No :	Q6P4F7
Mouse Swiss Prot No :	Q80Y19
Immunogen :	The antiserum was produced against synthesized peptide derived from human ARHGAP11A. AA range:471-520
Specificity :	ARHGAP11A Polyclonal Antibody detects endogenous levels of ARHGAP11A protein.
Formulation :	Liquid in PBS containing 50% glycerol, 0.5% BSA and 0.02% sodium azide.
Source :	Polyclonal, Rabbit,IgG
Dilution :	WB 1:500 - 1:2000. ELISA: 1:40000. Not yet tested in other applications.
Purification :	The antibody was affinity-purified from rabbit antiserum by affinity-chromatography using epitope-specific immunogen.
Concentration :	1 mg/ml
Storage Stability :	-15°C to -25°C/1 year(Do not lower than -25°C)
Observed Band :	110kD

Background :	This gene encodes a member of the Rho GTPase activating protein family. In response to DNA damage, the encoded protein interacts with the p53 tumor suppressor protein and stimulates its tetramerization, which results in cell-cycle arrest and apoptosis. A chromosomal deletion that includes this gene is one cause of Prader-Willi syndrome, and an intronic variant of this gene may be associated with sleep duration in children. This gene is highly expressed in colon cancers and in a human basal-like breast cancer cell line. [provided by RefSeq, Sep 2016],
Function :	similarity:Contains 1 Rho-GAP domain.,
Subcellular Location :	Nucleus .
Expression :	Bone marrow,Epithelium,Eye,Testis,Uterus,
Sort :	2234
No4 :	1
Host :	Rabbit
Modifications :	Unmodified

Products Images



Western blot analysis of ARHGAP11A Antibody. The lane on the right is blocked with the ARHGAP11A peptide.